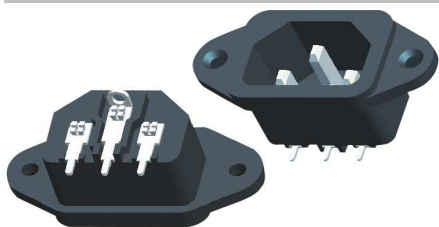


EDCON-COMPONENTS



Technical Discription

Voltage Rating: 15A/250VAC T105



Voltage Rating: 10A / 250VAC



Insulation Resistance: 1000MΩ (min) 500VDC

Dielectric withstand Voltage: 2500VAC 5s between Terminals 50~60Hz

Dielectric withstand Voltage: 3750VAC between Terminals to Base 50~60Hz

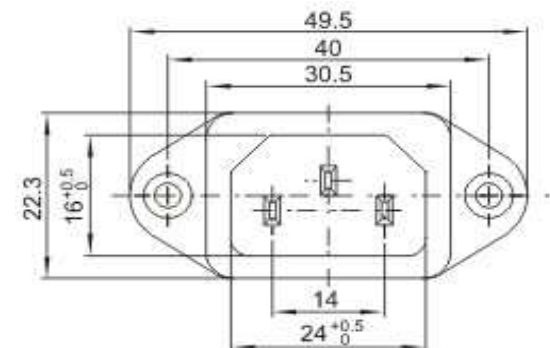
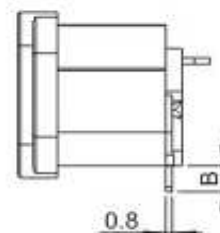
Insert & Extract Force: 1,36Kg - 6,8Kgf

Leakage Current: 1mA

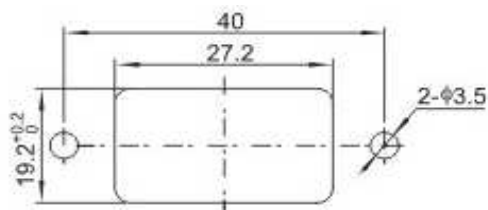
Terminal Strength: ≥ 80N

Operating Life: ≥ 5000 cycles

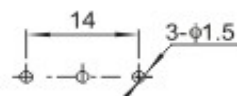
Drawing



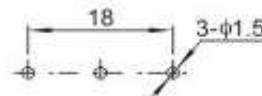
Panel Cutout



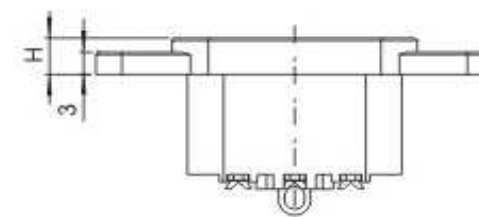
PCB Layout



Type A



Type B



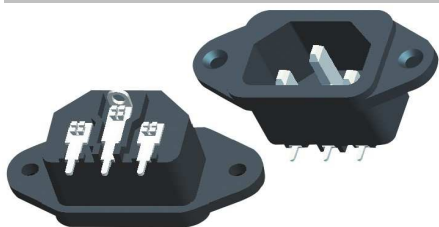
European AC-Power Connector

Part No.: T11041

DRW:	Jason	CHKD	Wilson	MATL:	Wilson	TOLERANCE	Mason	DATE	04.08.2016
APPD:	Schumi			FINISH	Jamy		Sheet No.		1 from 2

Customer:

EDCON-COMPONENTS



Ordering Informations

Serie	Body Colour	Panel Thickness A	PCB Layout Type	Connecting Terminal	Dimension B	Dimension H	ROHS	Packing		
-------	-------------	-------------------	-----------------	---------------------	-------------	-------------	------	---------	--	--

T11041	BK	N	A	N	A	A	R	BU		
---------------	-----------	----------	----------	----------	----------	----------	----------	-----------	--	--

BK = Black	N = No function	A = 14mm		A = 3,5mm	A = 4,9mm	R = ROHS Conform	BU = Bulk-Ware
WH = White		B = 18mm		B = 5mm	B = 5,4mm		
RD = Red			N = No function	C = 10,5mm	C = 6,0mm		IV = Individual Package
YE = Yellow							
GN = Green							
BL = Blue							

European AC-Power Connector

Part No.: **T11041**

DRW:	Jason	CHKD	Wilson	MATL:	Wilson	TOLERANCE	Mason	DATE	04.08.2016
APPD:	Schumi			FINISH	Jamy		Sheet No.	2 from 2	

Customer: