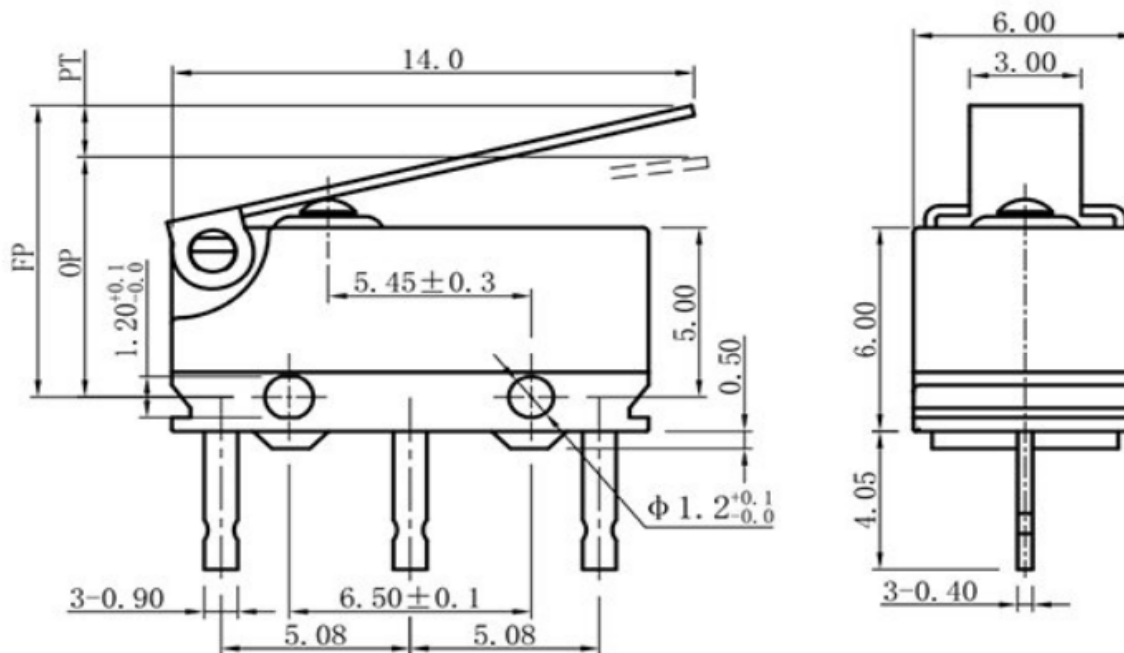




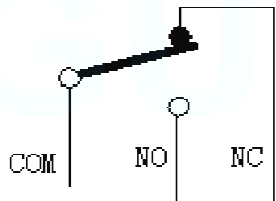
**SPECIFICATION:**

Rated Voltage:	125 / 250VAC / 50mA/DC5V
Rated Current:	3A/125VAC / 1,5A/250VAC
Contact Resistance:	≤ 100mΩ / DC500V
Operating Force:	70 ± 20gf
Resilence:	RF
Free Position: (FP)	10,4 ± 0,8mm
Action Position:(OP)	8,8 ± 0,8mm
Return Position	
Stroke:	PT
Sensitivity:	BT
Protection Degree:	IP67
Mechanical:	
Mechanical Life:	1.000.000 cycles, 2,5 Welding Process Manual Welding
Electrical Life:	10.000 cycles
Applicable Temperature:	-25°C + 85°C
Insulation Resistance:	≥100MΩ DC500V Applicable Humidity <85% RH
Withstanding Voltage:	AC 1000V 1 minute

**Drawing / Dimension (mm)**



**SCHEMATIC**



Tolerances unless otherwise specified (mm)									
x	x.x	x.xx	x.xxx	Angle					
±	±	±	±	±3°					
DRW:	Jason	CHKD	Wilson	MATL:	Wilson	TOLERANCE	Mason	DATE	07.09.2022
APPD:	Schumi			FINISH	Jamy			Sheet No.	1 from 4

<b>IP67 THT Mikro SWITCH</b>	
<b>12,8x6,5mm</b>	
Part No.:	<b>Q19041</b>
Customer:	

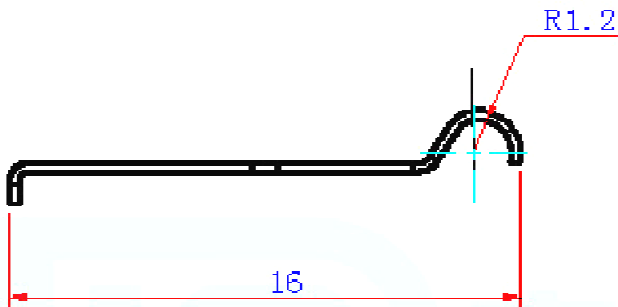
# EDCON-COMPONENTS



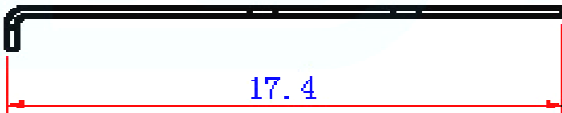
## Lever Style (Ax)



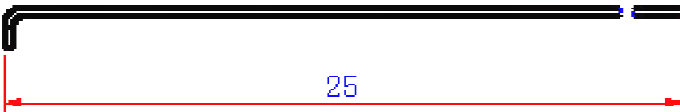
Order Code = A1



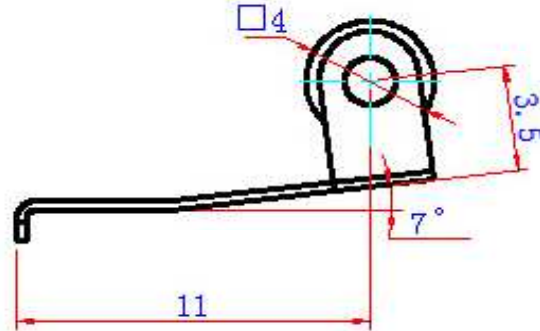
Order Code = A2



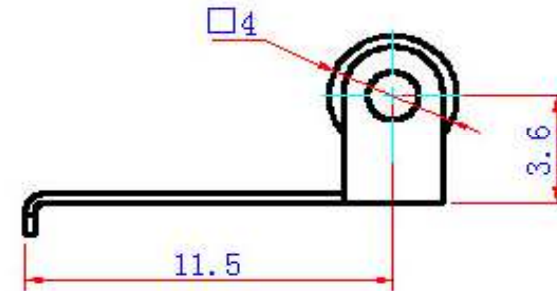
Order Code = A3



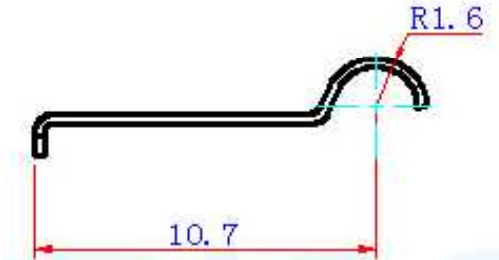
Order Code = A4



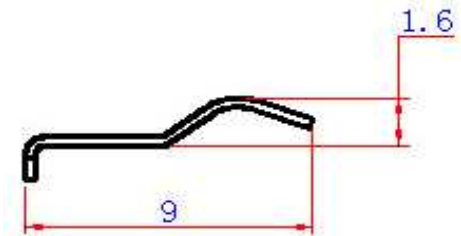
Order Code = A5



Order Code = A6



Order Code = A7



Order Code = A8

Order Code	Operating Force (gf)	
	BT	PT
B0	70	130
B1	20	40
B2	20	40
B3	20	30

**IP67 THT Mikro SWITCH**  
**12,8x6,5mm**

Part No.: **Q19041**

Customer:

DRW:	Jason	CHKD	Wilson	MATL:	Wilson	TOLERANCE	Mason	DATE	07.09.2022
APPD:	Schumi			FINISH	Jamy		Sheet No.		2 from 4

[www.edcon-components.com](http://www.edcon-components.com)

email: [info@edcon-components.com](mailto:info@edcon-components.com)

# EDCON-COMPONENTS



## Ordering Informations

Serie	Switch Type	Lever Style Code (Ax)	Operating force (Bx)	Circuit Code	Terminal	ROHS	Packing
<b>Q19041</b>	<b>1</b>	<b>A0</b>	<b>B0</b>	<b>A0</b>	<b>S</b>	<b>R</b>	<b>BU</b>

1= 1A/125VAC / 50mA/DC5	<b>A0</b> = without Lever	<b>B0</b> = 150gr	<b>A0</b> = SPDT	<b>S</b> = Solder	<b>R</b> = ROHS conform	<b>BU</b> = Bulk Ware
3= 3A/125VAC / 1,5A/250VAC	<b>A1</b> = Type A1		<b>B0</b> = SPST-NC	<b>P</b> = THT Straight PCB	<b>N</b> = Non ROHS	<b>TY</b> = Tray Packing
	<b>A2</b> = Type A2		<b>C0</b> = SPST-NO	<b>Q</b> = THT SNAP-IN PCB		
	<b>A3</b> = Type A3			<b>M</b> = Short Solder		
	<b>A4</b> = Type A4			<b>R</b> = Right angle PCB		<b>IV</b> = Individual Packing
	<b>A5</b> = Type A5			<b>L</b> = Left angle PCB		
	<b>A6</b> = Type A6			<b>K</b> = Long Solder		
	<b>A7</b> = Type A7					
	<b>A8</b> = Type A8					

<b>IP67 THT Mikro SWITCH 12,8x6,5mm</b>
Part No.: <b>Q19041</b>
Customer:

DRW:	Jason	CHKD	Wilson	MATL:	Wilson	TOLERANCE	Mason	DATE	07.09.2022
APPD:	Schumi			FINISH	Jamy		Sheet No.		3 from 4

[www.edcon-components.com](http://www.edcon-components.com)

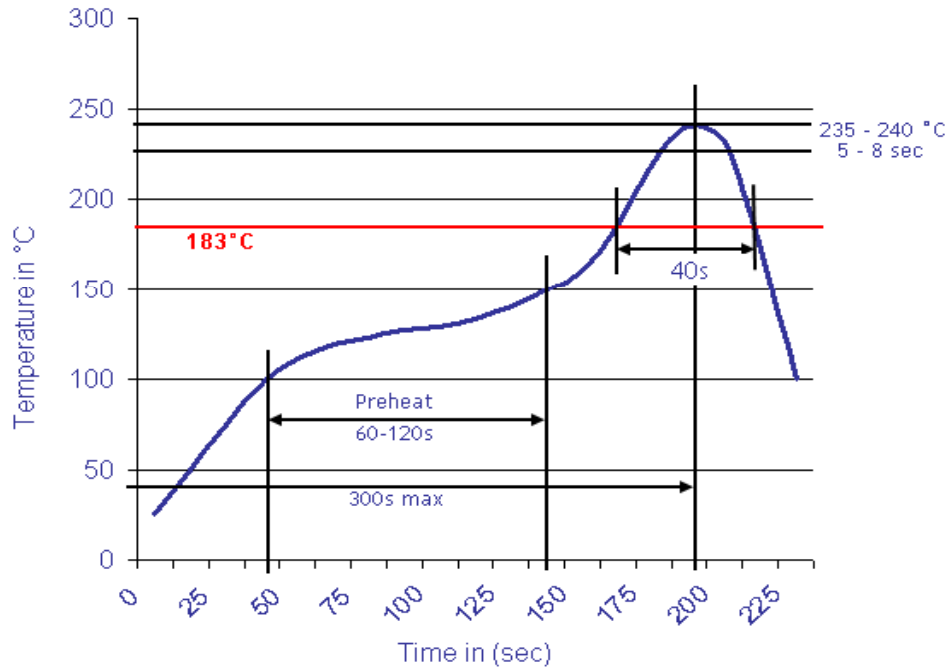
email: [info@edcon-components.com](mailto:info@edcon-components.com)



Soldering Profile for Lead Free Soldering

Soldering Profile for Reflow Soldering

Classification Reflow Profile (JEDEC J-STD-020C)



<b>IP67 THT Mikro SWITCH 12,8x6,5mm</b>	
Part No.:	<b>Q19041</b>
Customer:	

DRW:	Jason	CHKD	Wilson	MATL:	Wilson	TOLERANCE	Mason	DATE	07.09.2022
APPD:	Schumi			FINISH	Jamy		Sheet No.	4 from 4	