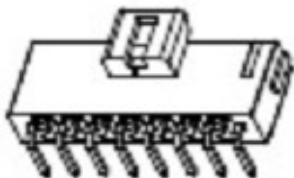


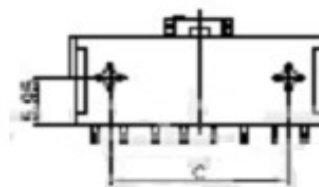
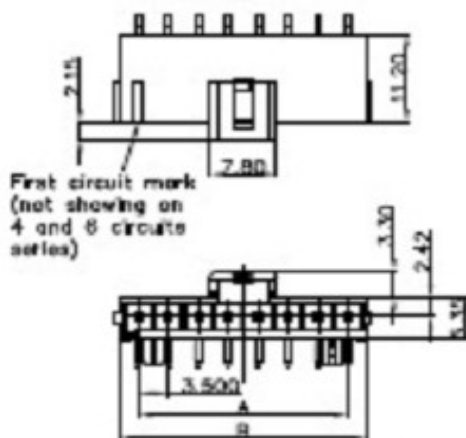
EDCON-COMPONENTS



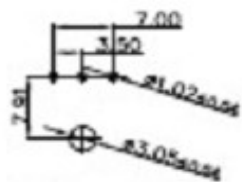
Technical Description

Current Rating:	14A AC/DC at 16AWG
Contact Resistance:	15mΩ max.
Withstanding Voltage:	1800VAC/ DC
Insulation Resistance:	1000MΩ Min
Operating Temperature:	-40°C to + 105°C
Contact Material:	Brass
Contact Plating:	Matte SN over Ni
Insulator Material:	LCP + 30%G.F UL94V-0
Available Pos.	2 to 8Pos

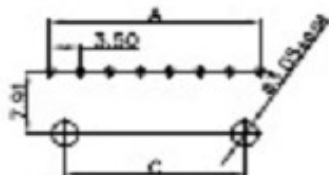
Drawing



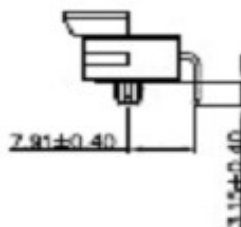
PCB Layout (mm)



PCB Layout(2~3pin)



PCB Layout(4~8pin)



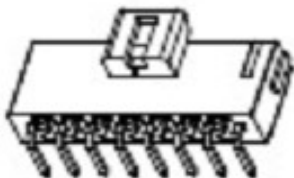
**Wire to Board Connector
(Wafer) Right angle Pin with
Look Single Row**

Part No.: **T68H008**

DRW:	Jason	CHKD	Wilson	MATL:	Wilson	TOLERANCE	Mason	DATE	06.05.2024
APPD:	Schumi			FINISH	Jamy			Sheet No.	1 from 4

Customer:

EDCON-COMPONENTS



Ordering Informations

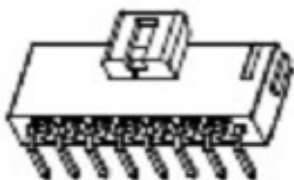
Serie	No. Of Position	Contact Plating	Contact Material	Color of Body	Key Code	Special Function	ROHS	Packing		
-------	-----------------	-----------------	------------------	---------------	----------	------------------	------	---------	--	--

T68H008	02	TN	BR	BK	L	N	R	BU		
----------------	-----------	-----------	-----------	-----------	----------	----------	----------	-----------	--	--

02= 2Pos.	TN= tinned	BR= Brass		L= Left Side	N= No Function	R= ROHS Conform	BU= Bulk-Ware
2 ~ 8Pos.			BK= Black			N= NON ROHS Conform	TU= Tube Packing
				R= Right Side			TC= Tube w. Cap Packing
							TR= Tape/Reel Packing w. Cap w. needed
	GD= Gold 1,5µ						IV= Individual Packing
	GE= Gold 3,0µ		NA= Nature				

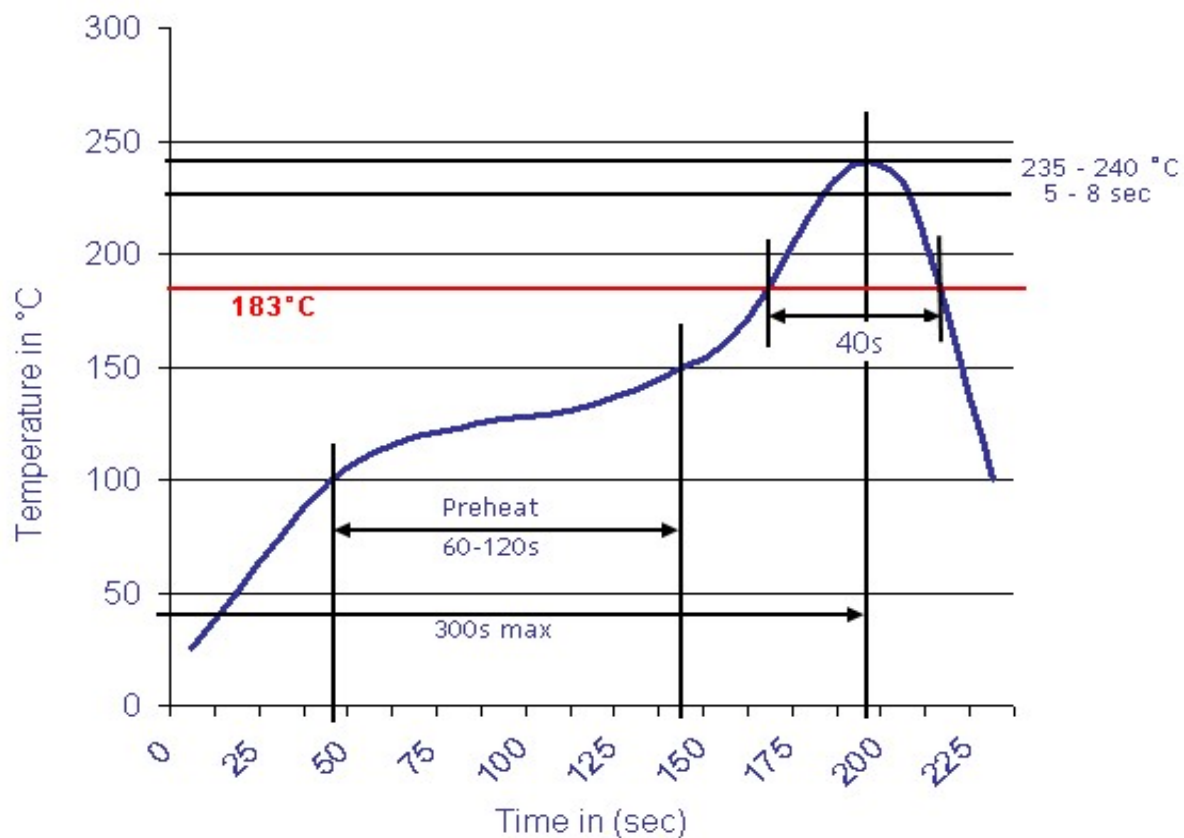
Wire to Board Connector (Wafer) Right angle Pin with Look Single Row
Part No.: T68H008
Customer:

DRW:	Jason	CHKD	Wilson	MATL:	Wilson	TOLERANCE	Mason	DATE	06.05.2024
APPD:	Schumi			FINISH	Jamy		Sheet No.		3 from 4



Soldering Profile Curve

Classification Reflow Profile (JEDEC J-STD-020C)



Wire to Board Connector (Wafer) Right angle Pin with Look Single Row	
Part No.:	T68H008
Customer:	

DRW:	Jason	CHKD	Wilson	MATL:	Wilson	TOLERANCE	Mason	DATE	06.05.2024
APPD:	Schumi			FINISH	Jamy		Sheet No.	4 from 4	