



DATA SHEET

7P + 6P SATA-Connector for Cable Assembly

Serie: T12002

7P + 6P SATA-Connector for Cable Assembly
Serie No.: T12002
Customer:

DRW:	Jason	CHKD	Wilson	MATL:	Wilson	TOLERANCE	Mason	DATE	18.03.2018
APPD:	Schumi			FINISH	Jamy		Sheet No.		1 from 5

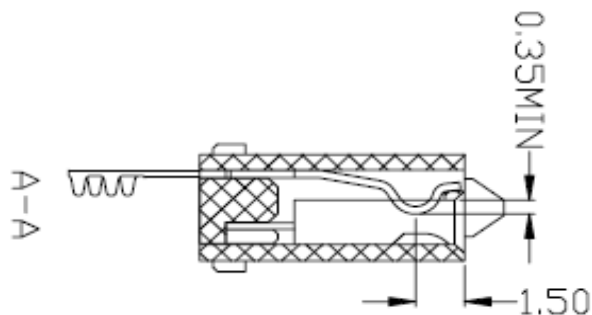
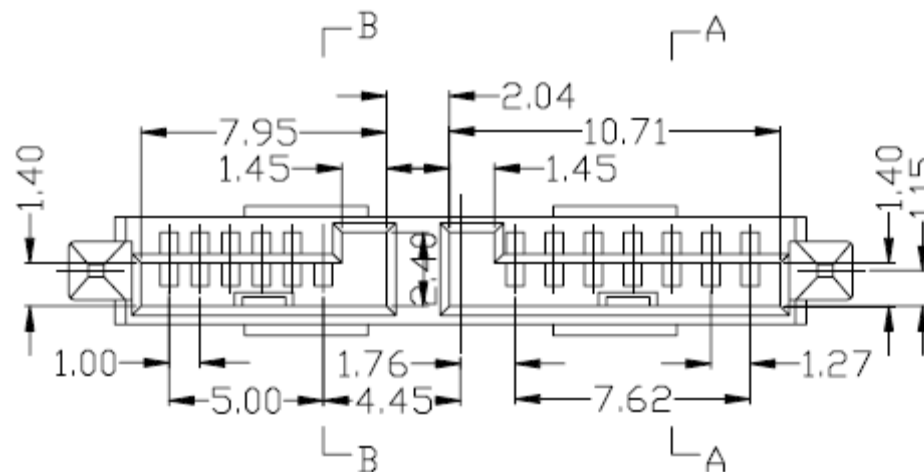
EDCON-COMPONENTS



Technical Description

Material Housing:	LCP (UL94V-0)
Colour of Body:	Black
Contact Material:	Phosphor Bronze 0,25mm
Board Lock Material:	Brass C2680R, Thickness 0,40mm
Contact Plating:	3µAU over15µ Tin on contact Area 100µ Min Tin-Lead plating on Solder Terminals
Board Lock Plating:	100µ Tin-Lead on Solderterminals 50µ min Nickel under plating overall
Current Rating:	1,5A
Voltage Rating:	40VAC
Contact Resistance:	30mΩ max.
Withstanding Voltage:	500VAC
Resistance:	1000MΩ min.
Temperature Range:	-20°C to + 85°C

Technical Drawing (mm)



**7P + 6P SATA-Connector for
Cable Assembly**

Part No.: **T12002**

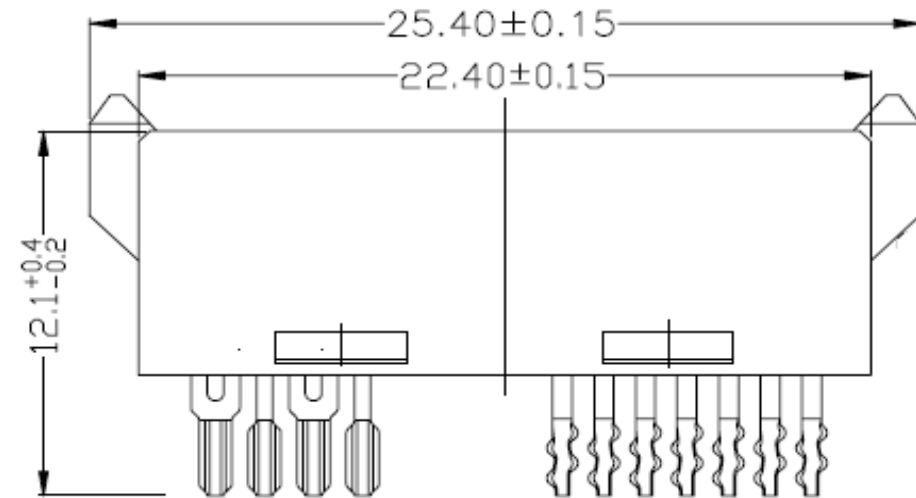
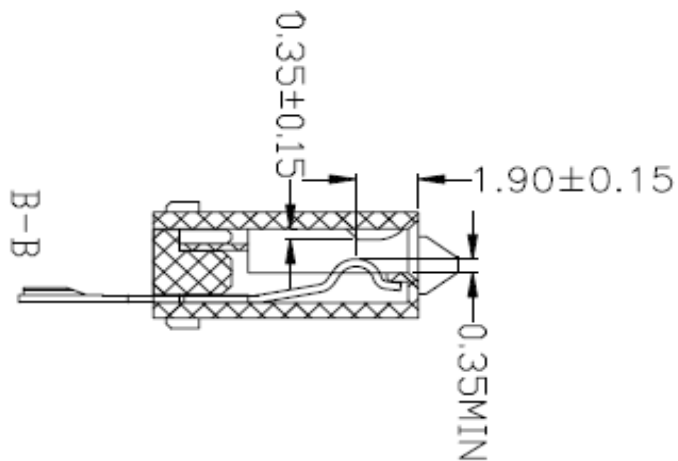
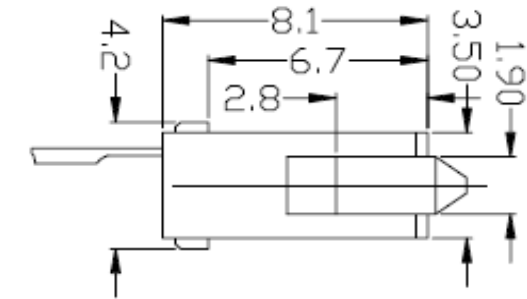
Customer:

DRW:	Jason	CHKD	Wilson	MATL:	X=	X.X=	X.XX=	X.XXX=	Angle
APPD:	Schumi			FINISH	±0,35	±0,25	±0,20	±0,15	±5°
					Wilson	TOLERANCE	Mason	DATE	18.03.2018
					Jamy		Sheet No.		2 from 5

EDCON-COMPONENTS



Technical Drawing (mm)



7P + 6P SATA-Connector for Cable Assembly

Part No.: **T12002**

Customer:

DRW:	Jason	CHKD	Wilson	MATL:	Wilson	TOLERANCE	Mason	DATE	18.03.2018
APPD:	Schumi			FINISH	Jamy		Sheet No.		3 from 5

www.edcon-components.com

email: info@edcon-components.com

Copyright by S.Tiede

EDCON-COMPONENTS



Ordering Informations

Customer	Connector No of Pos 1	Connector No of Pos 2	Contact Plating	Body Colour	Body Material	Special function	ROHS	Packing Code		
----------	-----------------------	-----------------------	-----------------	-------------	---------------	------------------	------	--------------	--	--

T12002	7	6	G0	BK	LC	N	R	TY		
---------------	----------	----------	-----------	-----------	-----------	----------	----------	-----------	--	--

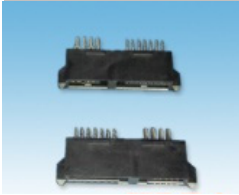
7= 7Pos. of Contact		G0= Gold Flash	BK= Black	LC= LCP	N= No special function	R= ROHS Conform	TY= Tray Package
		GA= 5µ Gold Flash				N= NON ROHS Conform	TR= Tape/Reel Package
	6= 6Pos. of Contact	GB= 10µ Gold Flash					TC= Tape/Reel w. Pic and Place CAP Package TOP-SIDE
							IV= Individual Package

7P + 6P SATA-Connector for Cable Assembly

Part No.: **T12002**

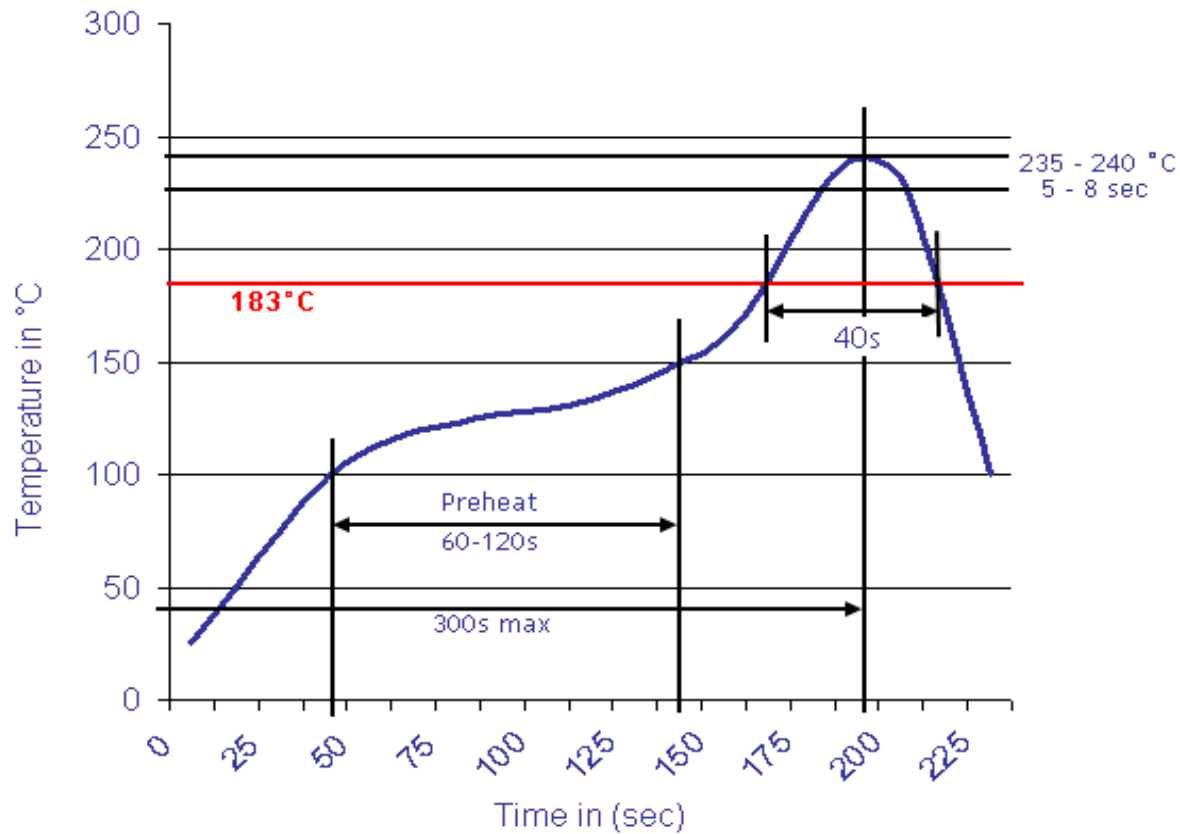
DRW:	Jason	CHKD	Wilson	MATL:	Wilson	TOLERANCE	Mason	DATE	18.03.2018
APPD:	Schumi			FINISH	Jamy		Sheet No.		4 from 5

Customer:



Soldering Profile Curve

Classification Reflow Profile (JEDEC J-STD-020C)



7P + 6P SATA-Connector for Cable Assembly
Part No.: T12002
Customer:

DRW:	Jason	CHKD	Wilson	MATL:	Wilson	TOLERANCE	Mason	DATE	18.03.2018
APPD:	Schumi			FINISH	Jamy		Sheet No.		5 from 5