



# DATA SHEET

## 7P + 15P SATA-Connector for Cable Assembly

### Serie: T12001

**7P + 15P SATA-Connector for Cable Assembly**

Serie No.: **T12001**

Customer:

DRW:	Jason	CHKD	Wilson	MATL:	Wilson	TOLERANCE	Mason	DATE	18.03.2018
APPD:	Schumi			FINISH	Jamy		Sheet No.		1 from 5

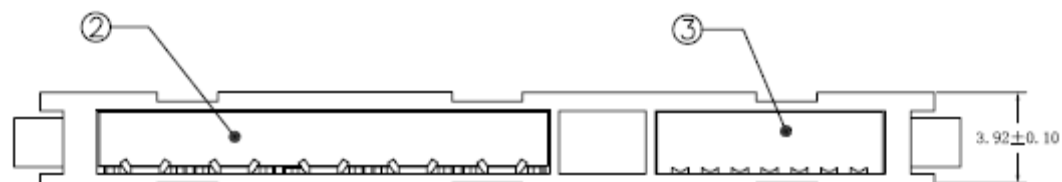
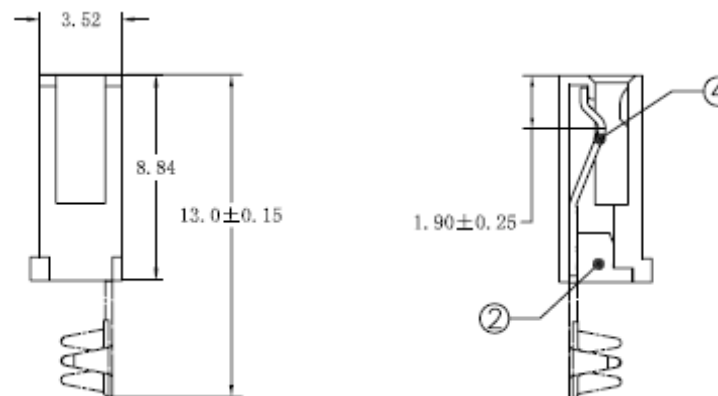
# EDCON-COMPONENTS



## Technical Description

Material Housing:	LCP (UL94V-0)
Colour of Body:	Black
Contact Material:	Phosphor Bronze 0,25mm
Board Lock Material:	Brass C2680R, Thickness 0,40mm
Contact Plating:	3µAU over 15µ Tin on contact Area 100µ Min Tin-Lead plating on Solder Terminals
Board Lock Plating:	100µ Tin-Lead on Solder terminals 50µ min Nickel under plating overall
Current Rating:	1,5A
Voltage Rating:	40VAC
Contact Resistance:	30mΩ max.
Withstanding Voltage:	500VAC
Resistance:	1000MΩ min.
Temperature Range:	-20°C to + 85°C

## Technical Drawing (mm)



**7P + 15P SATA-Connector for Cable Assembly**

Part No.: **T12001**

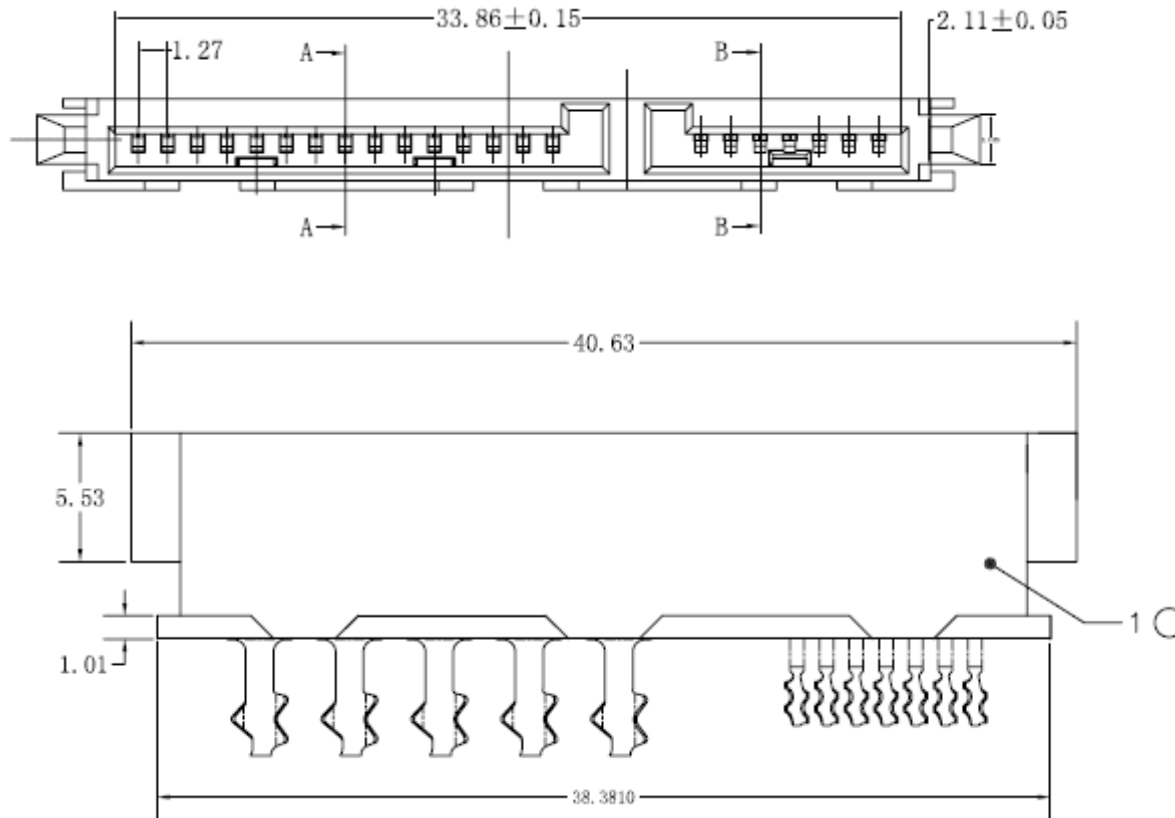
Customer:

DRW:	Jason	CHKD	Wilson	MATL:	X=	X.X=	X.XX=	X.XXX=	Angle
APPD:	Schumi			FINISH	±0,35	±0,25	±0,20	±0,15	±5°
					Wilson	TOLERANCE	Mason	DATE	18.03.2018
					Jamy			Sheet No.	2 from 5

# EDCON-COMPONENTS



## Technical Drawing (mm)



**7P + 15P SATA-Connector for  
Cable Assembly**

Part No.: **T12001**

DRW:	Jason	CHKD	Wilson	MATL:	Wilson	TOLERANCE	Mason	DATE	18.03.2018
APPD:	Schumi			FINISH	Jamy		Sheet No.		3 from 5

Customer:

# EDCON-COMPONENTS



## Ordering Informations

Customer	Connector No of Pos 1	Connector No of Pos 2	Contact Plating	Body Colour	Body Material	Special function	ROHS	Packing Code		
----------	-----------------------	-----------------------	-----------------	-------------	---------------	------------------	------	--------------	--	--

<b>T12001</b>	<b>7</b>	<b>15</b>	<b>G0</b>	<b>BK</b>	<b>LC</b>	<b>N</b>	<b>R</b>	<b>TY</b>		
---------------	----------	-----------	-----------	-----------	-----------	----------	----------	-----------	--	--

<b>7=</b> 7Pos. of Contact		<b>G0=</b> Gold Flash	<b>BK=</b> Black	<b>LC=</b> LCP	<b>N=</b> No special function	<b>R=</b> ROHS Conform	<b>TY=</b> Tray Package
	<b>15=</b> 15Pos. of Contact	<b>GA=</b> 5µ Gold Flash				<b>N=</b> NON ROHS Conform	<b>TR=</b> Tape/Reel Package
		<b>GB=</b> 10µ Gold Flash					<b>TC=</b> Tape/Reel w. Pic and Place CAP Package TOP-SIDE
							<b>IV=</b> Individual Package

**7P + 15P SATA-Connector for Cable Assembly**

Part No.: **T12001**

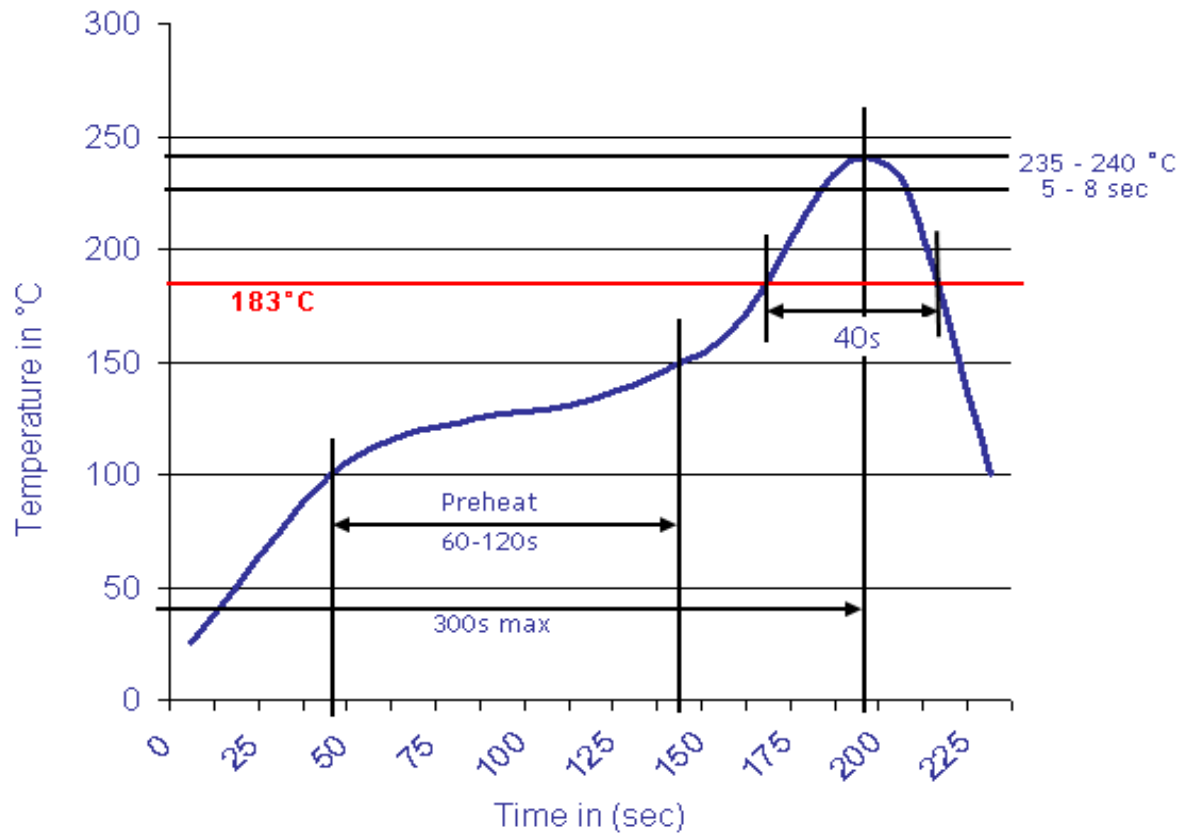
DRW:	Jason	CHKD	Wilson	MATL:	Wilson	TOLERANCE	Mason	DATE	18.03.2018
APPD:	Schumi			FINISH	Jamy		Sheet No.		4 from 5

Customer:



Soldering Profile Curve

Classification Reflow Profile (JEDEC J-STD-020C)



<b>7P + 15P SATA-Connector for Cable Assembly</b>	
Part No.:	<b>T12001</b>
Customer:	

DRW:	Jason	CHKD	Wilson	MATL:	Wilson	TOLERANCE	Mason	DATE	18.03.2018
APPD:	Schumi			FINISH	Jamy		Sheet No.		5 from 5