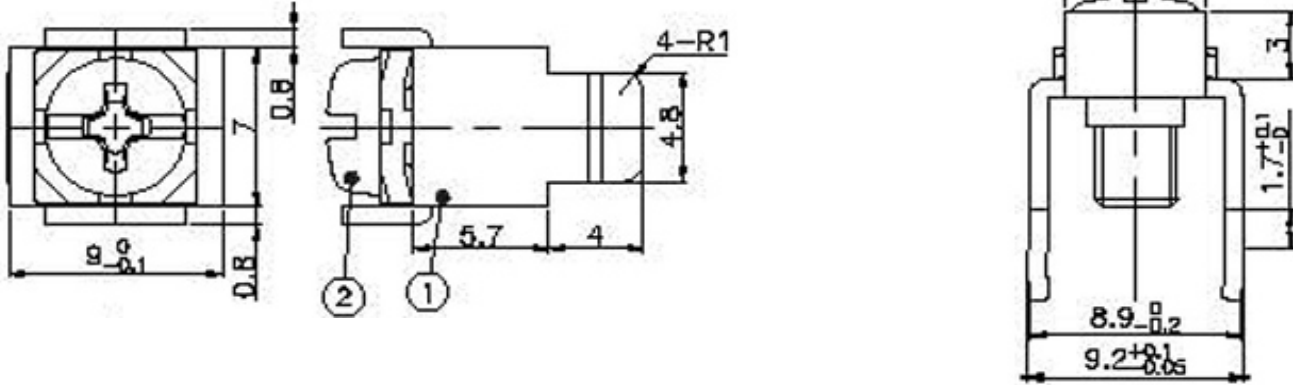




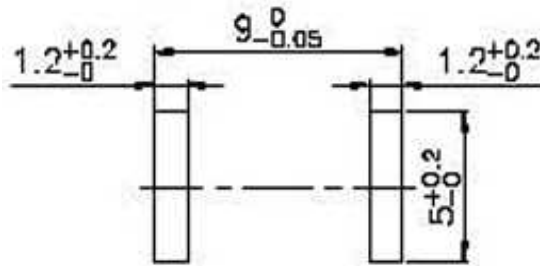
Technical Dimension



Material

Material: Brass, Tin plated
 Steel Nickel Plated
 Screw: M3,5
 Material Screw: Steel Nickel Plated
 Rated Current: 10A

PCB Board Drawing



Ordering Information

Serie	Material	Surface	Screw	ROHS	Packing
A25031	BR	TN	NO	R	BU102

BR= Brass	TN= Tin plated	NO= Screw Not Mounted	R= ROHS Conform	BU102= Bulk Ware 1000PCS
ST= Steel	NI= Nickel plated	YE= Screw Fixed on Terminal	N= NON ROHS	

PCB Power Terminal	
Part No.:	A25031
Customer:	

DRW:	Jason	CHKD	Jules	MATL:	Wu	DATE	17.11.2017
APPD:	Join			FINISH	Shieh	Sheet	1 from 1