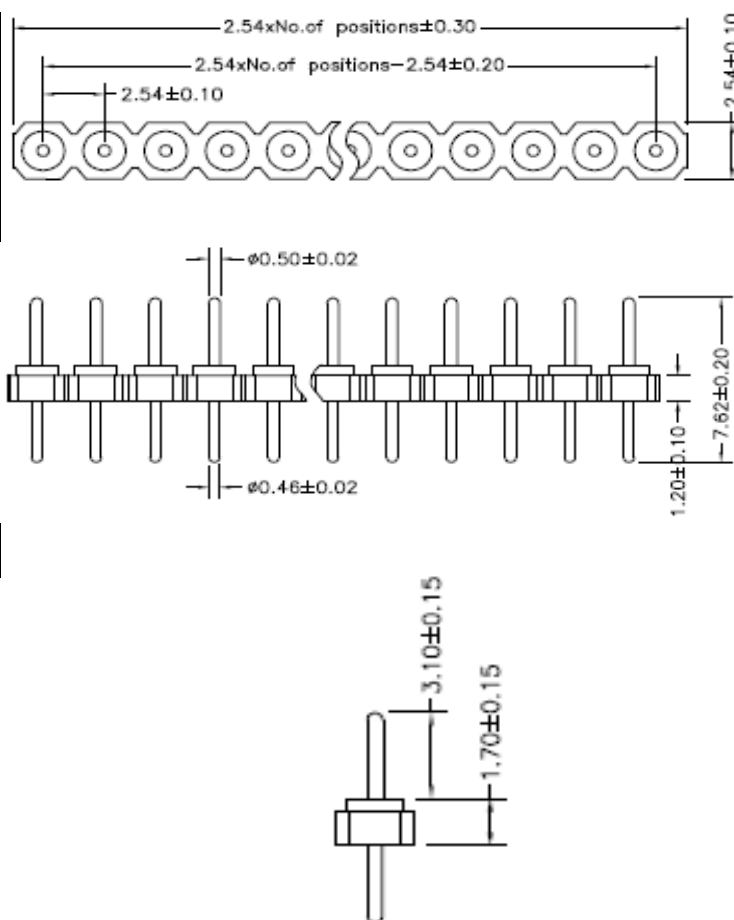


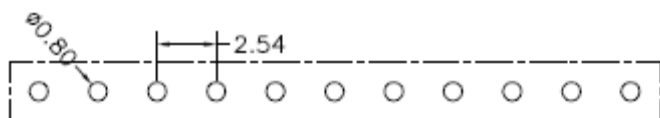
### Technical Specification

Insulator:	Black glass filled polyester PPS-GF-30-FR
Flammability:	UL 94V-0
Sleeve:	Brass CuZn 36Pb3 (36000)
Contact Clip (6finger):	Beryllium Copper (C17200)
Forces:	polished steel gauge(Ø)0,76mm
.-Insertion:	1,2N typ.
.-Withdrawel:	0,6N typ.
Mechanical Life:	min 500 cycles
Rated Current:	3A
Contact Resistance:	max. 10m Ohm
Dielectric Strength:	min 1000V rms
Minimal position of deliver:	2
Maximal position of deliver:	40

### Technical Drawing



### PCB Layout



### Ordering Information

Serie	No. of Pos.	Solder Pin Plating	Special function	ROHS	Packing
<b>T40173</b>	<b>02</b>	<b>A</b>	<b>0</b>	<b>R</b>	<b>B1</b>

<b>02 ~40</b>	<b>A=</b> Tin 150µ" (Standard)	<b>0=</b> No special funtion	<b>R=</b> ROHS conform	<b>B1=</b> Bulk 100PCS
	<b>B=</b> Tin 200µ"		<b>N=</b> NON ROHS conform	
	<b>C=</b> GF			
	<b>D=</b> Gold 2µ"			
	<b>E=</b> Gold 3µ"			
	<b>F=</b> Gold 10µ"			
	<b>G=</b> Gold 15µ"			
	<b>H=</b> Special			

**Machined Contact Pitch  
2,54mm**

Part No.: **T40173**

Customer:

DRW:	Jason	CHKD	Jules	MATL:	Wu	DATE	21.07.2017
APPD:	Join			FINISH	Shieh	Sheet	1 from 1