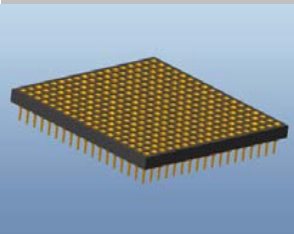


EDCON-COMPONENTS



Technical Discription

Material:

Pin (outer Sleeve) Brass machined CuZn38Pb2
 Plating (Outer Sleeve) Tin Plated 2µm/80µm " Ni 5µm/80µ Sn
 Gold Plated; 2µm / 80µm Ni full gold
 Plating contact: 2µm/80 Ni, gold or Tin plated
 Insulator: PPS UL94V-0
 Clip: Contact 4 Finger: Berillium copper heat treated

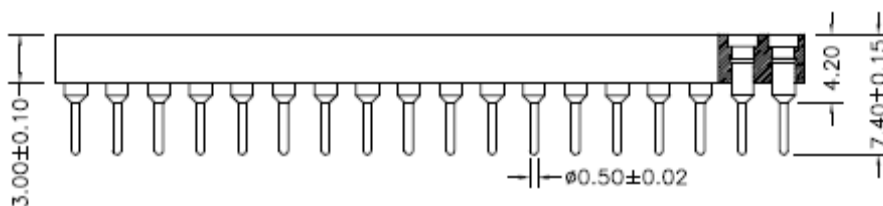
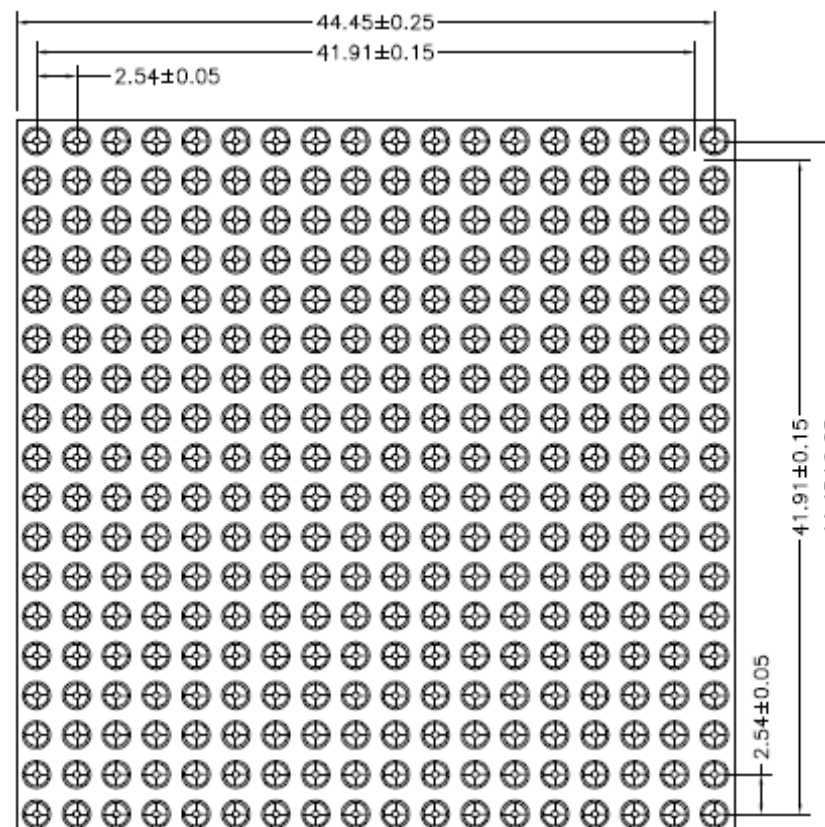
Electrical:

Current Rating: 3 Amps/ contact max.
 Contact Resistance: ≤ 4mΩ / contact
 Insulation Resistance: ≥ 1000MΩ at 500V
 Dielectric Withstand. Vol 1000V AV Min
 Operating Voltage 60VAC/DC

Mechanical:

Average Insertion force with steel pin of Ø 0,432: /<250gr.
 Average withdravel force with steel pin of Ø 0,432: />70gr.
 Operating Temperature: -40°C to +105°C
 Soldering Temperature: 255°C

Drawing

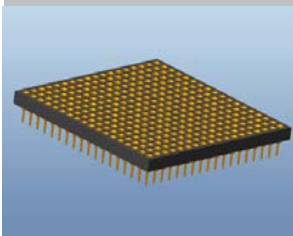


324Pin PGA Socket
2,54x2,54mm (18x18)

Part No.: **T34102**

DRW:	Jason	CHKD	Wilson	MATL:	Wilson	TOLERANCE	Mason	DATE	24.07.2017
APPD:	Schumi			FINISH	Jamy		Sheet No.	1 from 3	Customer:

EDCON-COMPONENTS



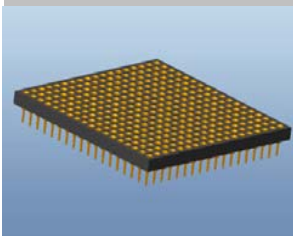
Ordering Informations

Serie	Number of Pos.	Solder Pin Plated	Contact Clip Plated	Spezial Function	ROHS	Packing				
T34102	324	A	3	0	R	TU				

324= Contact Pin	A= Tin 150µm (Standard)	1= Tin 150µm	0= No function	R= ROHS Conform	TU Tube Packing
	B= Tin 200µm (Standard)	2= Tin 200µm		N= NON ROHS Conform	
	C= Gold Flash 0,25µm	3= Gold Flash 0,25µm			
	D= Gold 2µm	4= Gold 2µm			
	E= Gold 3µm	5= Gold 3µm			
	F= Gold 10µm	6= Gold 10µm			
	G= Gold 15µm	7= Gold 15µm			
	H= Special	8= Special			

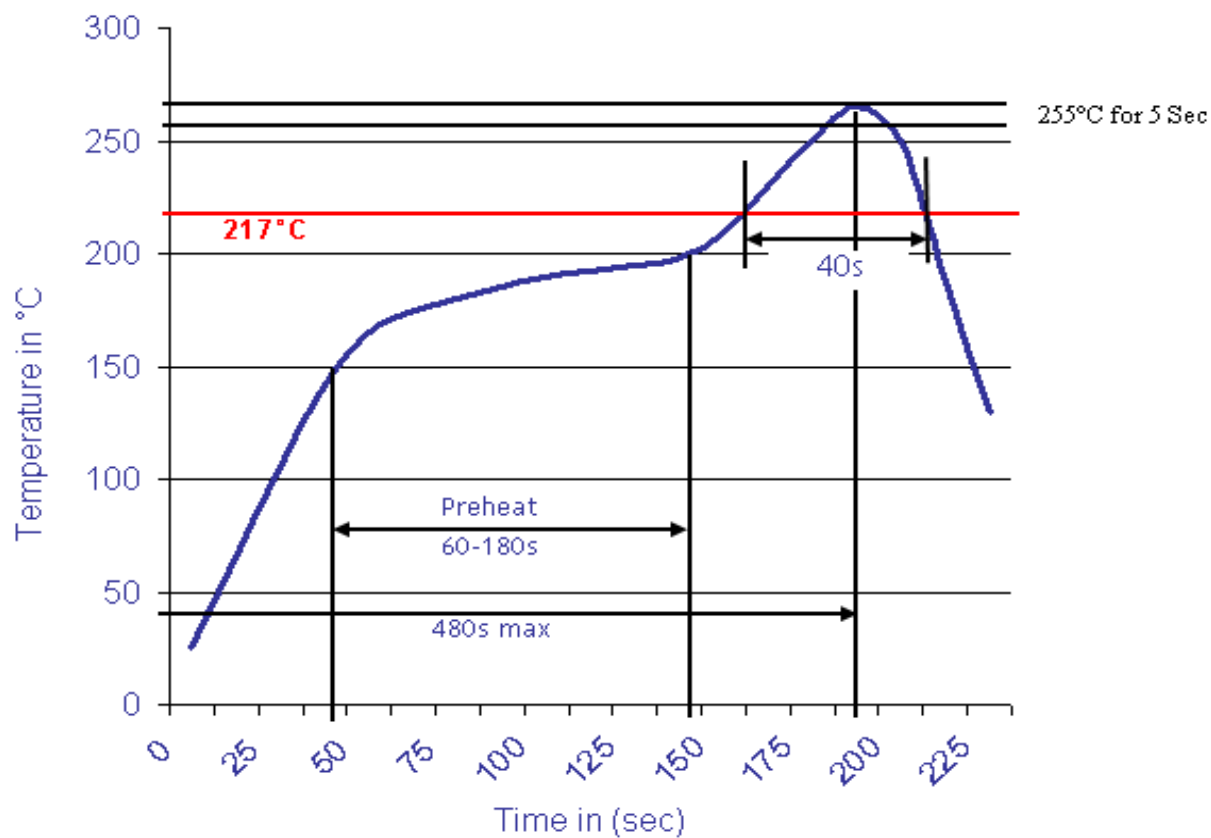
324Pin PGA Socket	
2,54x2,54mm (18x18)	
Part No.:	T34102
Customer:	

DRW:	Jason	CHKD	Wilson	MATL:	Wilson	TOLERANCE	Mason	DATE	24.07.2017
APPD:	Schumi			FINISH	Jamy		Sheet No.	2 from 3	



Soldering Profile Curve

Classification Reflow Profile (JEDEC J-STD-020C)



324Pin PGA Socket
2,54x2,54mm (18x18)

Part No.: **T34102**

DRW:	Jason	CHKD	Wilson	MATL:	Wilson	TOLERANCE	Mason	DATE	24.07.2017
APPD:	Schumi			FINISH	Jamy		Sheet No.	3 from 3	Customer: