

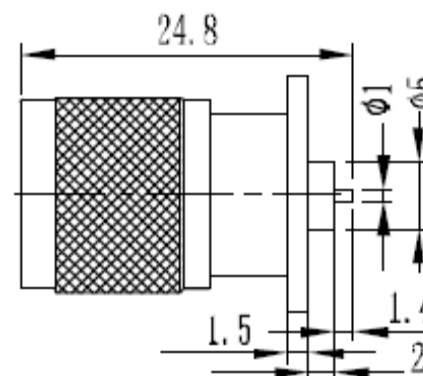
# EDCON-COMPONENTS



## Electric Data

Characteristic Impedance	50 Ohm
Frequency Range	0-11 GHz
Working Voltage	500 VRMS (max sea Level)
Dielectric Withstanding Voltage	1500 VRMS (min sea Level)
VSWR	Straight $\leq 1.30$
Contact Resistance	Inner: 1.5 milliohms (max.) Outer: 0.2 milliohms (max.)
Insulation Resistance	5000 Megaohms (min)

## Drawing ( dimensions all into mm)



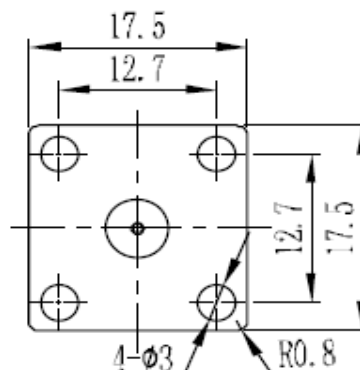
## Mechanical Data

Durability Mating	500 Cycles (min)
-------------------	------------------

## Material Data

Connector Parts	Materials	Plating Finish
Body	Brass	Nickel or Silver
Male Pin	Brass	Gold or Silver
Insulators	PTFE	N/A

## PCB Layout



## Environmental Data

Temperature Range	-65 ~ +165°C
-------------------	--------------

**TNC Male Panel Mount Solder  
Pot Terminal 4 Holes Flange**

Part No.: **T55T1108-**

Note: We can provide other materials and plating specifications according to customers requirements

DRW:	Jason	CHKD	Wilson	MATL:	Wilson	TOLERANCE	Mason	DATE	19.12.2017
APPD:	Schumi			FINISH	Jamy		Sheet No.		1 from 2

Customer:  
email: [info@edcon-components.com](mailto:info@edcon-components.com)

[www.edcon-components.com](http://www.edcon-components.com)

# EDCON-COMPONENTS



## Ordering Informations

Serie	Impedance	Body Materials	Body Plating	Contact Pin Materials	Contact Pin Plating	Special function	ROHS	Packing			
<b>T55T1108-</b>	<b>50</b>	<b>BR</b>	<b>NI</b>	<b>BR</b>	<b>GO</b>	<b>N</b>	<b>R</b>	<b>BU</b>			

<b>50= 50Ω</b>	<b>BR= Brass Material</b>	<b>NI= Nickel Plated</b>	<b>BR= Brass Material</b>	<b>GO= Gold Plated</b>	<b>N= NON Special</b>	<b>R= ROHS Conform</b>	<b>BU= Bulk Ware</b>
		<b>SI= Silver Plated</b>		<b>SI= Silver Plated</b>		<b>N= NON ROHS Conform</b>	<b>IV= Individual Package</b>

**TNC Male Panel Mount Solder Pot Terminal 4 Holes Flange**

Part No.: **T55T1108-**

DRW:	Jason	CHKD	Wilson	MATL:	Wilson	TOLERANCE	Mason	DATE	19.12.2017	Customer:
APPD:	Schumi			FINISH	Jamy		Sheet No.	2 from 2		