

EDCON-COMPONENTS



Electric Data

Characteristic Impedance	50 Ohm
Frequency Range	0-10 GHz
Working Voltage	250 VRMS (max sea Level)
Dielectric Withstanding Voltage	750 VRMS (min sea Level)
VSWR	Straight 1.25 Max
Contact Resistance	Inner: 6milliohms (max.) Outer: 1milliohms (max.)
Insulation Resistance	1000 Megaohms (min)

Mechanical Data

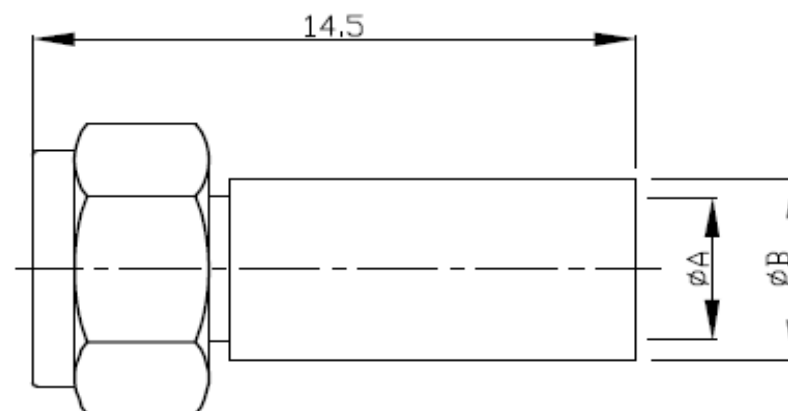
Durability Mating	500 Cycles (min)
-------------------	------------------

Material Data

Connector Parts	Materials	Plating Finish
Body	Brass	Gold
Female Pin	Phosphor Bronze	Gold
Insulators	PTFE	N/A

PCB Layout

Drawing (dimensions all into mm)



Environmental Data

Temperature Range	-65 ~ +165°C
-------------------	--------------

**SMC Female Straight Solder For
Semi-Rigid Cable**

Part No.: **T55L1030-**

Note: We can provide other materials and plating specifications according to customers requirements

DRW:	Jason	CHKD	Wilson	MATL:	Wilson	TOLERANCE	Mason	DATE	14.12.2017
APPD:	Schumi			FINISH	Jamy		Sheet No.		1 from 2

Customer:

www.edcon-components.com

email: info@edcon-components.com

EDCON-COMPONENTS



Ordering Informations

Serie	Impedance	Contact Pin Plating	Body Material	Body Plating	Special function	Special function	ROHS	Packing		
-------	-----------	---------------------	---------------	--------------	------------------	------------------	------	---------	--	--

T55L1030-	50	G0	BR	G0	A	N	R	BU		
------------------	-----------	-----------	-----------	-----------	----------	----------	----------	-----------	--	--

50= 50Ω	G0= Gold Plated	BR= Brass Material	G0= Gold Plated	A= A=2,2/B=3,0	N= No Special	R= ROHS Conform	BU= Bulk Ware		
----------------	------------------------	---------------------------	------------------------	-----------------------	----------------------	------------------------	----------------------	--	--

				B= A=3,6/B=4,6		N= NON ROHS Conform	IV= Individual Package		
--	--	--	--	-----------------------	--	----------------------------	-------------------------------	--	--

A= 085 (SFT-50-2-1, SM86, RG-405/U)
B= 141 (SFT-50-3-1, SM141, RG-402/U)

SMC Female Straight Solder For Semi-Rigid Cable

Part No.: **T55L1030-**

DRW:	Jason	CHKD	Wilson	MATL:	Wilson	TOLERANCE	Mason	DATE	14.12.2017
APPD:	Schumi			FINISH	Jamy		Sheet No.		2 from 2

Customer: