

# EDCON-COMPONENTS



## Technical Discription

## Drawing

### 1 Material:

Material Body:	C2700
Gold Plated:	16-20µm
Nickel:	60-120µm
Material Needle:	C3604
Gold Plated:	4-8µm
Nickel:	60-120µm
Spring:	SUS304
Body:	PA46

### 2 Mechanical Properties

Pitch:	4,00mm
Working height:	5,4~5,7mm
Elastic:	100 ±20gr

Lifetime:more than 10000 times

### 3 Electrical Performance:

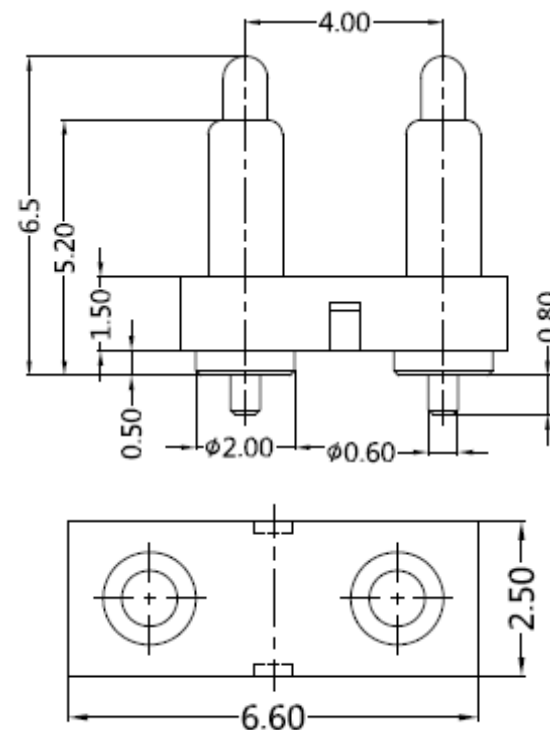
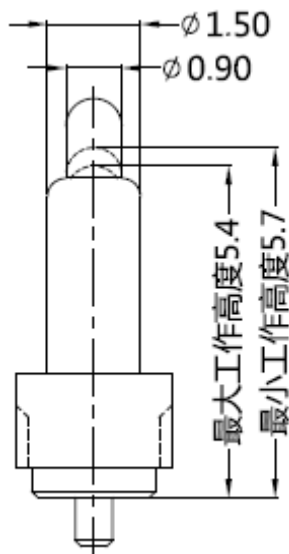
4 **Isolation Resistance:** 500M Ohm min.  
 Withstanding Voltage: 500VAC/DC  
 Max.Rated Voltage: 36VDC dynamic range of work with impedance less than

Contact Resistance: <30m Ohm

Rated current: 2,5A

### 5 Packing Specification:

6 Max.Soldering Temperature: 260°C  
 Operating Temperature: -40°C to +85°C



Tolerance			
0.	0.0	0.00	0.000
± -	± 0,30	± 0,15	± -
TOLERANCE	Mason	DATE	07.12.2017
APPD:	Schumi	Sheet No.	1 from 3

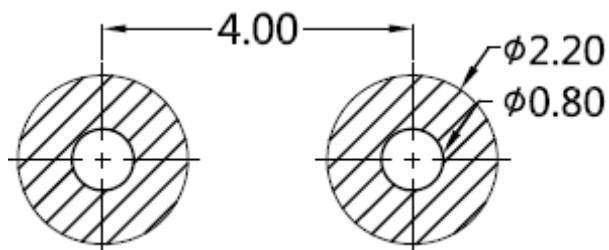
<b>THT 2 POGO PIN with Plastic</b>	
Part No.:	<b>TA23C2130</b>
Customer:	

DRW:	Jason	CHKD	Wilson	MATL:	Wilson
APPD:	Schumi			FINISH	Jamy

# EDCON-COMPONENTS



## PCB Layout ( mm)



## Ordering Informations

Serie	Number of Position	Material Body	Material Needle	Contact Plat. Body	Contact Plat. Needle	Spezial Function	ROHS	Packing		
<b>TA23C2130</b>	<b>02</b>	<b>A</b>	<b>A</b>	<b>G0</b>	<b>G0</b>	<b>N</b>	<b>R</b>	<b>BU</b>		

<b>02= Position</b>	<b>A= Material C3604</b>	<b>A= Material C3604</b>	<b>G0= Gold Flash &lt;16-20µinch</b>	<b>G0= Gold Flash 4-8µinch</b>	<b>N= No function</b>	<b>R= ROHS Conform</b>	<b>BU= Bulk-Ware Standard</b>
	<b>B= Material C2700</b>	<b>B= Material C2700</b>					
			<b>NO= Nickel 60-120µinch</b>	<b>NO= Nickel 60-120µinch</b>			<b>TU= Tube Packing</b>

**THT 2 POGO PIN  
with Plastic**

Part No.: **TA23C2130**

DRW:	Jason	CHKD	Wilson	MATL:	Wilson	TOLERANCE	Mason	DATE	07.12.2017	Customer:
APPD:	Schumi			FINISH	Jamy		Sheet No.	2 from 3		



Soldering Profile Curve

Classification Reflow Profile (JEDEC J-STD-020C)



<b>THT 2 POGO PIN with Plastic</b>	
Part No.:	<b>TA23C2130</b>
Customer:	

DRW:	Jason	CHKD	Wilson	MATL:	Wilson	TOLERANCE	Mason	DATE	07.12.2017
APPD:	Schumi			FINISH	Jamy		Sheet No.	3 from 3	