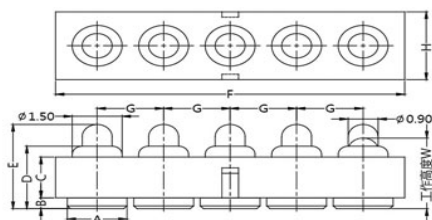


EDCON-COMPONENTS



Technical Discription

Drawing

1 Material:

| | |
|------------------|----------|
| Material Body: | C2700 |
| Gold Plated: | 16-20µm |
| Nickel: | 60-120µm |
| Material Needle: | C3604 |
| Gold Plated: | 4-8µm |
| Nickel: | 60-120µm |
| Spring: | SUS304 |
| Body: | PA46 |

2 Mechanical Properties

| | |
|-----------------|-----------|
| Pitch: | 2,54mm |
| Working height: | 3,8~4,1mm |
| Elastic: | 85±15gr |

Lifetime: more than 10000 times

3 Electrical Performance:

4 Isolation Resistance:

| |
|--|
| 500M Ohm min. |
| Withstanding Voltage: 500VAC/DC |
| Max. Rated Voltage: 36VDC dynamic range of work with impedance less than |

Contact Resistance: <30m Ohm

Rated current: 2,5A

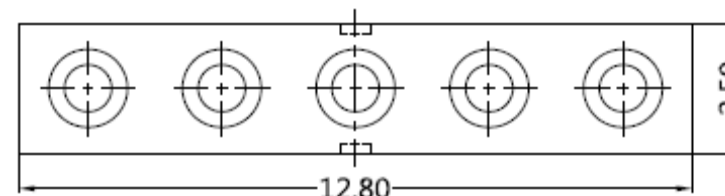
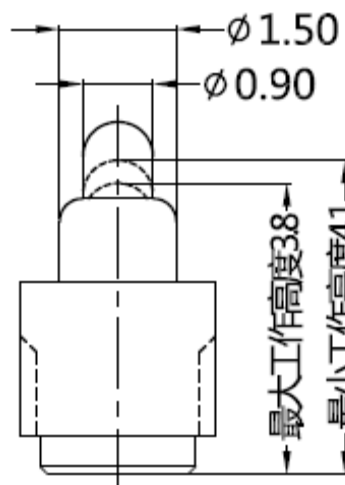
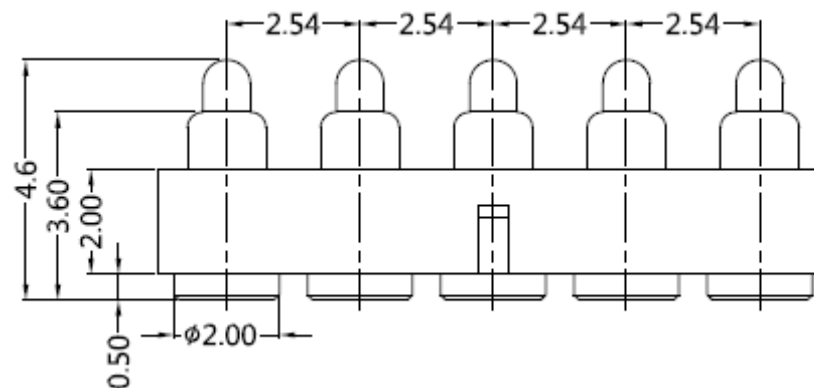
5 Packing Specification:

EIA 481

6 Max. Soldering Temperature:

260°C

Operating Temperature: -40°C to +85°C



5 POGO PIN with Plastic

Part No.: **TA23B6010**

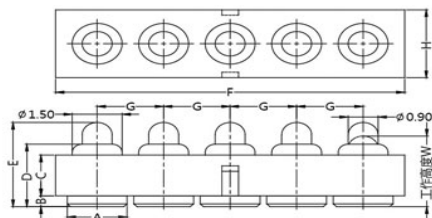
Customer:

| | | | | | | | | | |
|-------|--------|------|--------|--------|--------|-----------|-------|------|------------|
| DRW: | Jason | CHKD | Wilson | MATL: | Wilson | TOLERANCE | Mason | DATE | 05.12.2017 |
| APPD: | Schumi | | | FINISH | Jamy | Sheet No. | | | 1 from 3 |

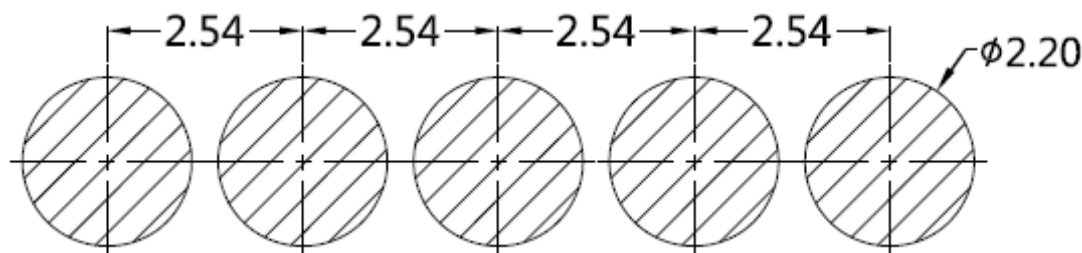
www.edcon-components.com

email: info@edcon-components.com

EDCON-COMPONENTS



PCB Layout (mm)



Ordering Informations

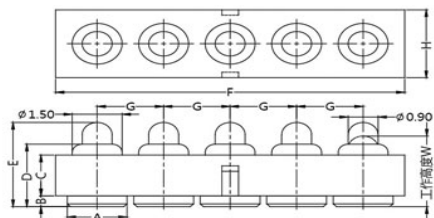
| Serie | Number of Position | Material Body | Material Needle | Contact Plat. Body | Contact Plat. Needle | Spezial Function | ROHS | Packing | | |
|-----------|--------------------|---------------|-----------------|--------------------|----------------------|------------------|------|---------|--|--|
| TA23B6010 | 05 | A | A | G0 | G0 | N | R | BU | | |

| | | | | | | | |
|--------------|-------------------|-------------------|---|---|----------------|-----------------|------------------------|
| 05= Position | A= Material C3604 | A= Material C3604 | G0= Gold Flash <math>< 16-20\mu\text{inch}</math> | G0= Gold Flash 4-8μinch | N= No function | R= ROHS Conform | BU= Bulk-Ware Standard |
| | B= Material C2700 | B= Material C2700 | | | | | |
| | | | N0= Nickel 60-120μinch | N0= Nickel 60-120μinch | | | TR= Tape Reel |

5 POGO PIN with Plastic

Part No.: **TA23B6010**

| | | | | | | | | | | |
|-------|--------|------|--------|--------|--------|-----------|-----------|----------|------------|-----------|
| DRW: | Jason | CHKD | Wilson | MATL: | Wilson | TOLERANCE | Mason | DATE | 05.12.2017 | Customer: |
| APPD: | Schumi | | | FINISH | Jamy | | Sheet No. | 2 from 3 | | |



Soldering Profile Curve

Classification Reflow Profile (JEDEC J-STD-020C)



| | |
|--------------------------------|------------------|
| 5 POGO PIN with Plastic | |
| Part No.: | TA23B6010 |
| Customer: | |

| | | | | | | | | | |
|-------|--------|------|--------|--------|--------|-----------|-----------|----------|------------|
| DRW: | Jason | CHKD | Wilson | MATL: | Wilson | TOLERANCE | Mason | DATE | 05.12.2017 |
| APPD: | Schumi | | | FINISH | Jamy | | Sheet No. | 3 from 3 | |