



## Technical Discription

## Drawing

### 1 Material:

Material Body:	C2700
Gold Plated:	16-20µm
Nickel:	60-120µm
Material Needle:	C3604
Gold Plated:	4-8µm
Nickel:	60-120µm
Spring:	SUS304
Body:	PA46

### 2 Mechanical Properties

Pitch:	3,5mm
Working height:	5,6~5,9mm
Elastic:	100 ± 20g

Lifetime: more than 10000 times

### 3 Electrical Performance:

4 Isolation Resistance:	500M Ohm min.
Withstanding Voltage:	500VAC/DC
Max. Rated Voltage:	36VDC dynamic range of work with impedance less than

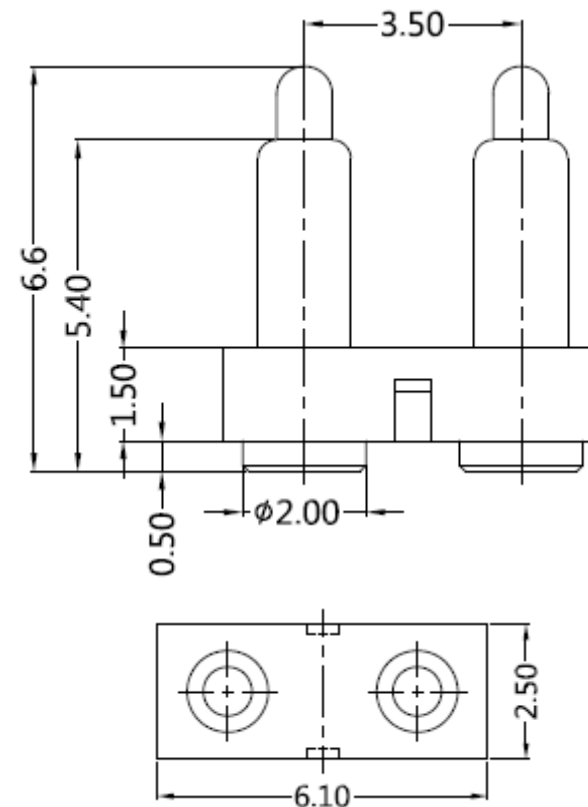
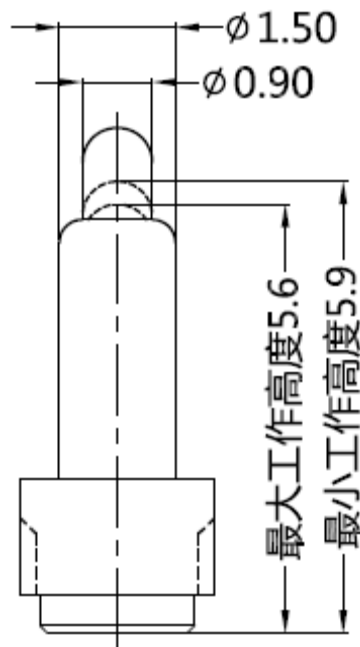
Contact Resistance: <30m Ohm

Rated current: 2,5A

5 Packing Specification: EIA 481

6 Max. Soldering Temperature: 260°C

Operating Temperature: -40°C to +85°C



Tolerance			
0.	0.0	0.00	0.000
± -	± 0,30	± 0,15	± -
TOLERANCE	Mason	DATE	22.11.2017
APPD:	Sheet No.	1 from 3	

## 2 POGO PIN with Plastic

Part No.: **TA23B3090**

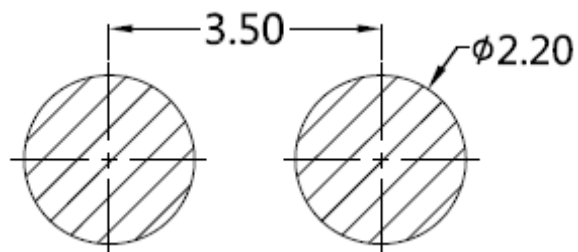
Customer:

DRW:	Jason	CHKD	Wilson	MATL:	Wilson				
APPD:	Schumi			FINISH	Jamy				

# EDCON-COMPONENTS



## PCB Layout ( mm)



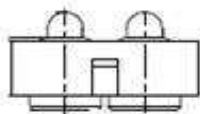
## Ordering Informations

Serie	Number of Position	Material Body	Material Needle	Contact Plat. Body	Contact Plat. Needle	Spezial Function	ROHS	Packing		
<b>TA23B3090</b>	<b>02</b>	<b>A</b>	<b>A</b>	<b>G0</b>	<b>G0</b>	<b>N</b>	<b>R</b>	<b>BU</b>		

<b>02=</b> Single Pole	<b>A=</b> Material C3604	<b>A=</b> Material C3604	<b>G0=</b> Gold Flash <math>< 16-20\mu\text{inch}</math>	<b>G0=</b> Gold Flash 4-8 $\mu\text{inch}$	<b>N=</b> No function	<b>R=</b> ROHS Conform	<b>BU=</b> Bulk-Ware Standard
	<b>B=</b> Material C2700	<b>B=</b> Material C2700					
			<b>N0=</b> Nickel 60-120 $\mu\text{inch}$	<b>N0=</b> Nickel 60-120 $\mu\text{inch}$			<b>TR=</b> Tape Reel

**2 POGO PIN with Plastic**  
Part No.: **TA23B3090**

DRW:	Jason	CHKD	Wilson	MATL:	Wilson	TOLERANCE	Mason	DATE	22.11.2017	Customer:
APPD:	Schumi			FINISH	Jamy		Sheet No.	2 from 3		



Soldering Profile Curve

Classification Reflow Profile (JEDEC J-STD-020C)



**2 POGO PIN with Plastic**

Part No.: **TA23B3090**

DRW:	Jason	CHKD	Wilson	MATL:	Wilson	TOLERANCE	Mason	DATE	22.11.2017
APPD:	Schumi			FINISH	Jamy		Sheet No.	3 from 3	Customer: