

# EDCON-COMPONENTS



## Technical Discription

### 1 Material:

Material Body: C2700  
 Gold Plated: 16-20µm  
 Nickel: 60-120µm  
 Material Needle: C3604  
 Gold Plated: 4-8µm  
 Nickel: 60-120µm  
 Spring: SUS304  
 Body: PA46

### 2 Mechanical Properties

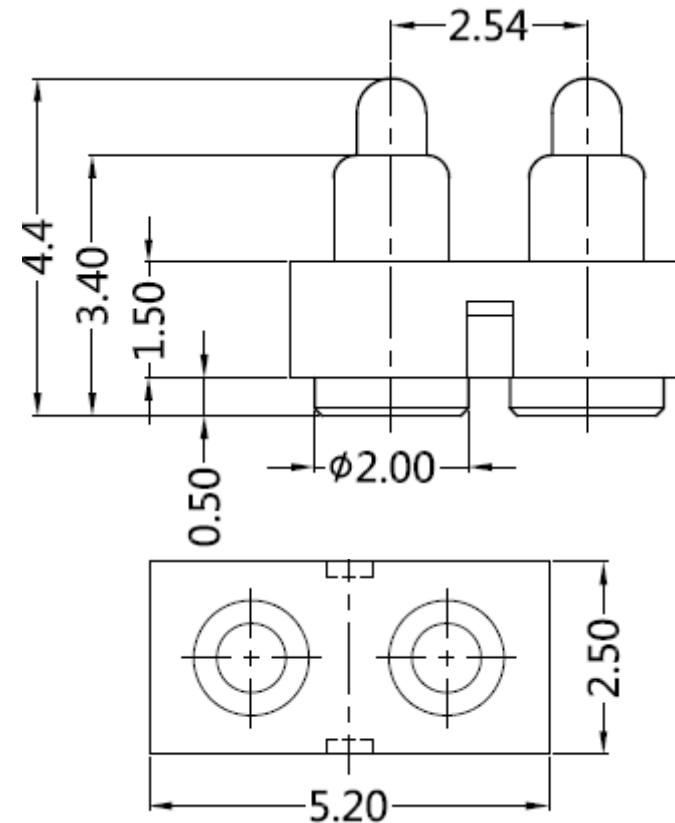
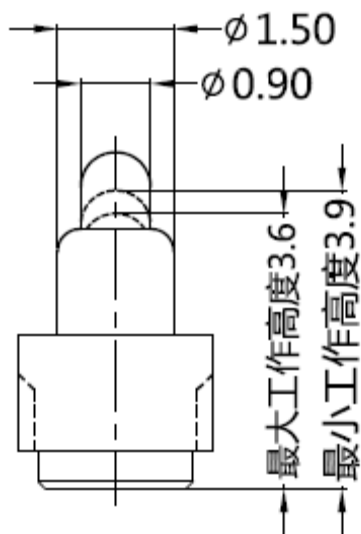
Pitch: 2,54mm  
 Working height: 3,6~3,9mm  
 Elastic: 85 ± 15g

Lifetime: more than 10000 times

### 3 Electrical Performance:

4 Isolation Resistance: 500M Ohm min.  
 Withstanding Voltage: 500VAC/DC  
 Max. Rated Voltage: 36VDC dynamic range of work with impedance less than  
 Contact Resistance: <30m Ohm  
 Rated current: 2,5A  
 5 Packing Specification: EIA 481  
 6 Max. Soldering Temperature: 260°C  
 Operating Temperature: -40°C to +85°C

## Drawing

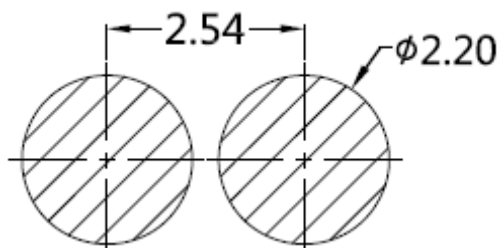


|       |        |      |        |        |        |           |           |          |            |           |                                |
|-------|--------|------|--------|--------|--------|-----------|-----------|----------|------------|-----------|--------------------------------|
|       |        |      |        |        |        |           | Tolerance |          |            |           | <b>2 POGO PIN with Plastic</b> |
|       |        |      |        |        |        |           | 0.        | 0.0      | 0.00       | 0.000     |                                |
|       |        |      |        |        |        |           | ± -       | ± 0,30   | ± 0,15     | ± -       | Part No.: <b>TA23B3012</b>     |
| DRW:  | Jason  | CHKD | Wilson | MATL:  | Wilson | TOLERANCE | Mason     | DATE     | 22.11.2017 | Customer: |                                |
| APPD: | Schumi |      |        | FINISH | Jamy   |           | Sheet No. | 1 from 3 |            |           |                                |

# EDCON-COMPONENTS



## PCB Layout ( mm)



## Ordering Informations

| Serie     | Number of Position | Material Body | Material Needle | Contact Plat. Body | Contact Plat. Needle | Spezial Function | ROHS | Packing |  |  |
|-----------|--------------------|---------------|-----------------|--------------------|----------------------|------------------|------|---------|--|--|
| TA23B3012 | 02                 | A             | A               | G0                 | G0                   | N                | R    | BU      |  |  |

|                 |                   |                   |                            |                         |                |                 |                        |
|-----------------|-------------------|-------------------|----------------------------|-------------------------|----------------|-----------------|------------------------|
| 02= Single Pole | A= Material C3604 | A= Material C3604 | G0= Gold Flash <16-20µinch | G0= Gold Flash 4-8µinch | N= No function | R= ROHS Conform | BU= Bulk-Ware Standard |
|                 | B= Material C2700 | B= Material C2700 |                            |                         |                |                 |                        |
|                 |                   |                   | NO= Nickel 60-120µinch     | NO= Nickel 60-120µinch  |                |                 | TR= Tape Reel          |

**2 POGO PIN with Plastic**  
Part No.: TA23B3012

|       |        |      |        |        |        |           |           |          |            |           |
|-------|--------|------|--------|--------|--------|-----------|-----------|----------|------------|-----------|
| DRW:  | Jason  | CHKD | Wilson | MATL:  | Wilson | TOLERANCE | Mason     | DATE     | 22.11.2017 | Customer: |
| APPD: | Schumi |      |        | FINISH | Jamy   |           | Sheet No. | 2 from 3 |            |           |



Soldering Profile Curve

Classification Reflow Profile (JEDEC J-STD-020C)



|                                |
|--------------------------------|
| <b>2 POGO PIN with Plastic</b> |
| Part No.: <b>TA23B3012</b>     |
| Customer:                      |

|       |        |      |        |        |        |           |           |          |            |
|-------|--------|------|--------|--------|--------|-----------|-----------|----------|------------|
| DRW:  | Jason  | CHKD | Wilson | MATL:  | Wilson | TOLERANCE | Mason     | DATE     | 22.11.2017 |
| APPD: | Schumi |      |        | FINISH | Jamy   |           | Sheet No. | 3 from 3 |            |