



# DATA SHEET

## SMD EMI-SHIELD Contacts for PCB

**Serie: N53002**

<b>SMD EMI-SHIELD Contacts for PCB</b>	
Serie No.:	<b>N53002</b>
Customer:	

DRW:	Jason	CHKD	Wilson	MATL:	Wilson	TOLERANCE	Supplier No.	20.09.2016
APPD:	Schumi			FINISH	Jamy			1 from 7

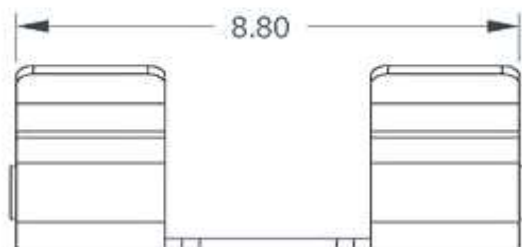
# EDCON-COMPONENTS



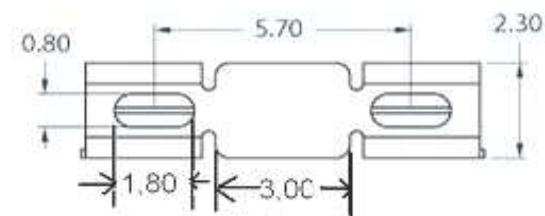
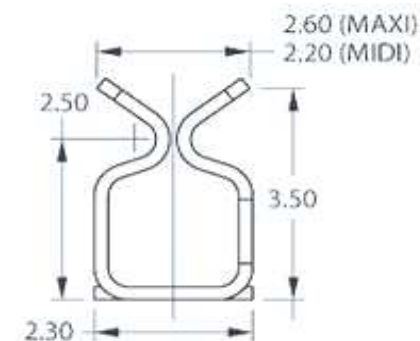
## Technical Description

Material: SUS301  
 Material Thickness: 0,15t  
 Finished: Sn plating on both sides  
 Packing Material: Reel: Hips 0,3T  
 Quantity of Reel: 10000PCS min. MOQ  
 Available Shield Case: 0,15~0,2mm

## Technical Dimensions



PCB Layout



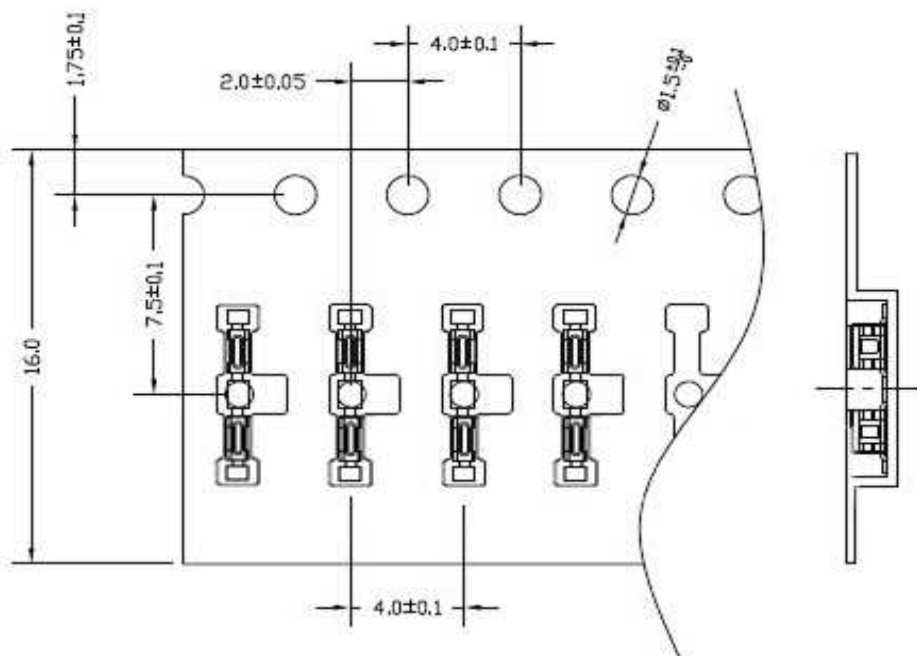
### SMD EMI-SHIELD Contacts for PCB

Part No.: **N53002**

Customer:

DRW:	Jason	CHKD	Wilson	MATL:	Wilson	TOLERANCE	Mason	DATE	20.09.2016
APPD:	Schumi			FINISH	Jamy		Sheet No.	2 from 7	

# EDCON-COMPONENTS



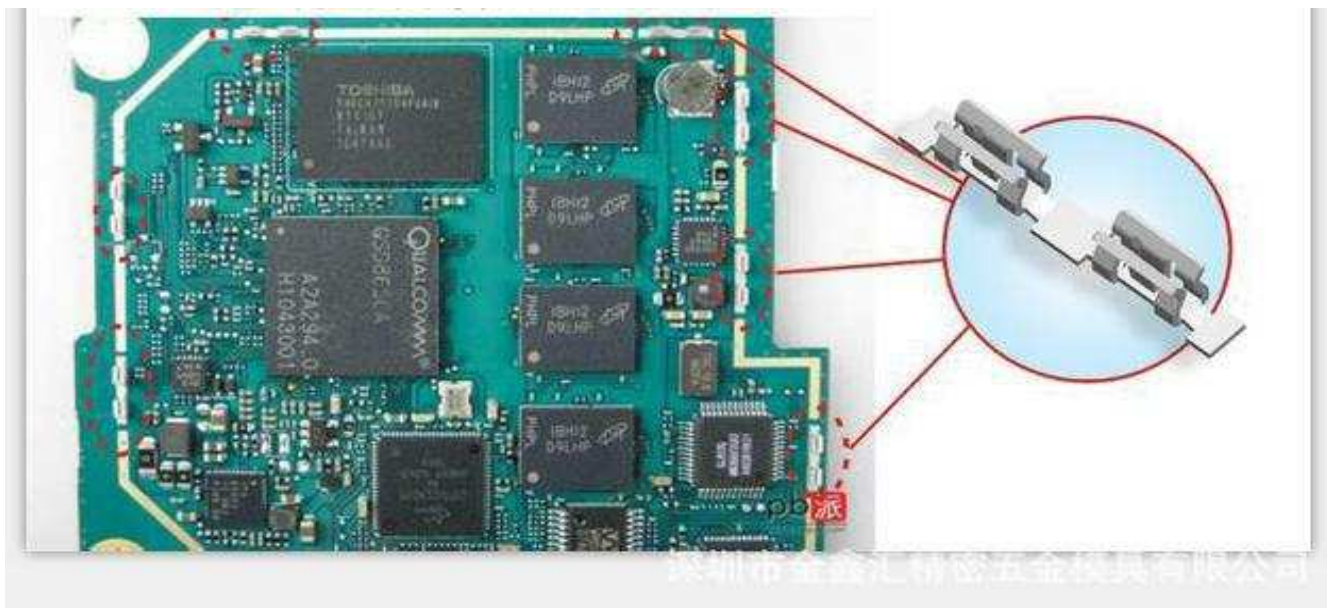
<b>SMD EMI-SHIELD Contacts for PCB</b>	
Part No.:	<b>N53002</b>
Customer:	

DRW:	Jason	CHKD	Wilson	MATL:	Wilson	TOLERANCE	Mason	DATE	20.09.2016
APPD:	Schumi			FINISH	Jamy		Sheet No.	3 from 7	

[www.edcon-components.com](http://www.edcon-components.com)

email: [info@edcon-components.com](mailto:info@edcon-components.com)

# EDCON-COMPONENTS



深圳市鑫鑫汇精密五金模具有限公司

## SMD EMI-SHIELD Contacts for PCB

Part No.: **N53002**

Customer:

DRW:	Jason	CHKD	Wilson	MATL:	Wilson	TOLERANCE	Mason	DATE	20.09.2016
APPD:	Schumi			FINISH	Jamy		Sheet No.	4 from 7	

[www.edcon-components.com](http://www.edcon-components.com)

email: [info@edcon-components.com](mailto:info@edcon-components.com)

# EDCON-COMPONENTS



Size Order Code	Dimension (mm)			Shield Can Thickness	Plating	Material	Packing one Reel
	L	W	H				
A01	8,8	2,6	3,5	0,15~0,2	Sn	SUS	10000
A02							
A03							
A04							
A05							
A06							
A07							
A08							
A09							
A10							
A11							
A12							
A13							
A14							
A15							
A16							
A17							
A18							
A19							
A20							
A21							
A22							
A23							
A24							
A25							
A26							
A27							

<b>SMD EMI-SHIELD Contacts for PCB</b>	
Part No.:	<b>N53002</b>
Customer:	

DRW:	Jason	CHKD	Wilson	MATL:	Wilson	TOLERANCE	Mason	DATE	20.09.2016
APPD:	Schumi			FINISH	Jamy		Sheet No.		5 from 7



# EDCON-COMPONENTS



## Ordering Informations

Serie	Size Code	Material	Plating	Special funtion	Special funtion	Special funtion	Special funtion	ROHS	Packing Code	
-------	-----------	----------	---------	-----------------	-----------------	-----------------	-----------------	------	--------------	--

<b>N53002</b>	-	<b>A01</b>	<b>SUS</b>	<b>SN</b>	<b>N</b>	<b>N</b>	<b>N</b>	<b>N</b>	<b>R</b>	<b>TR</b>	
---------------	---	------------	------------	-----------	----------	----------	----------	----------	----------	-----------	--

Axx = Look Size Table	SUS= Material	SN= tinned	N= No function	N= No function	N= No function	N= No function	R= ROHS Conform	BU= Bulk Ware	
							N= NON ROHS Conform	TR= Tape Reel	

**SMD EMI-SHIELD Contacts  
for PCB**

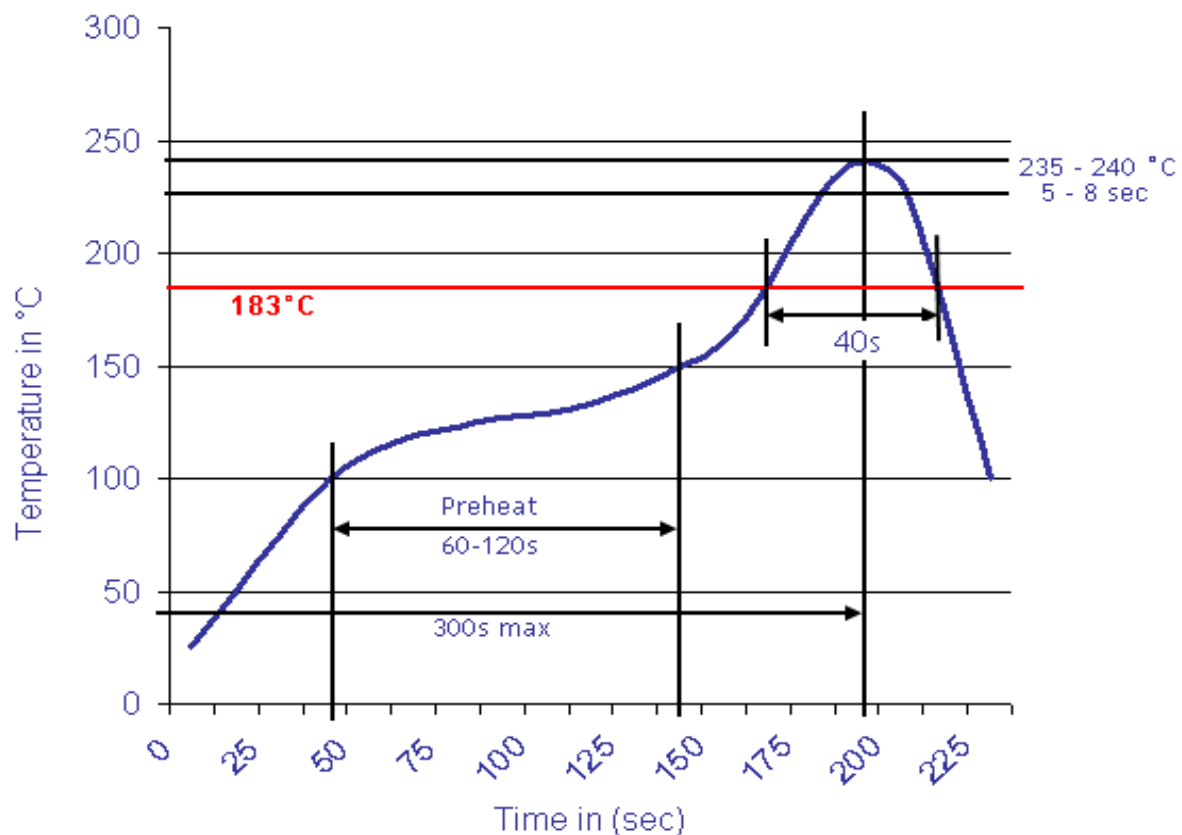
Part No.: **N53002**

DRW:	Jason	CHKD	Wilson	MATL:	Wilson	TOLERANCE	Mason	DATE	20.09.2016
APPD:	Schumi			FINISH	Jamy		Sheet No.	6 from 7	Customer:



Soldering Profile Curve

Classification Reflow Profile (JEDEC J-STD-020C)



**SMD EMI-SHIELD Contacts  
for PCB**

Part No.: **N53002**

Customer:

DRW:	Jason	CHKD	Wilson	MATL:	Wilson	TOLERANCE	Mason	DATE	20.09.2016
APPD:	Schumi			FINISH	Jamy		Sheet No.	7 from 7	





