



DATA SHEET

SMD EMI-SHIELD Contacts for PCB

Serie: N53001

**SMD EMI-SHIELD Contacts
for PCB**

Serie No.: **N53001**

Customer:

DRW:	Jason	CHKD	Wilson	MATL:	Wilson	TOLERANCE	Supplier	20.09.2016
APPD:	Schumi			FINISH	Jamy			1 from 7

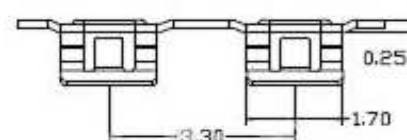
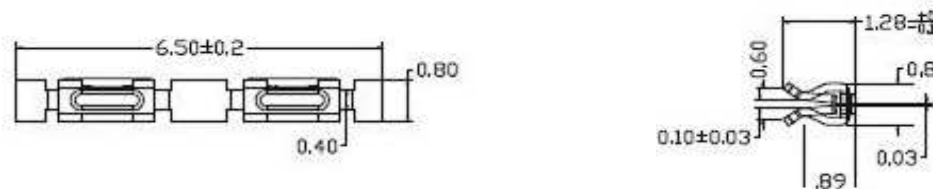
EDCON-COMPONENTS



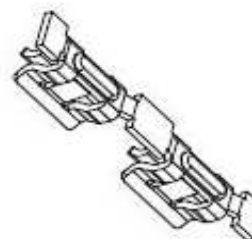
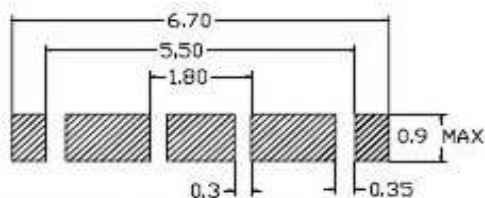
Technical Description

Material: SUS031
 Material Thickness: 0,15t
 Finished: Sn plating on both sides
 Packing Material: Reel: Hips 0,3T
 Quantity of Reel: 10000PCS min. MOQ
 Available Shield Case: 0,15~0,2mm

Technical Dimensions



PCB Layout



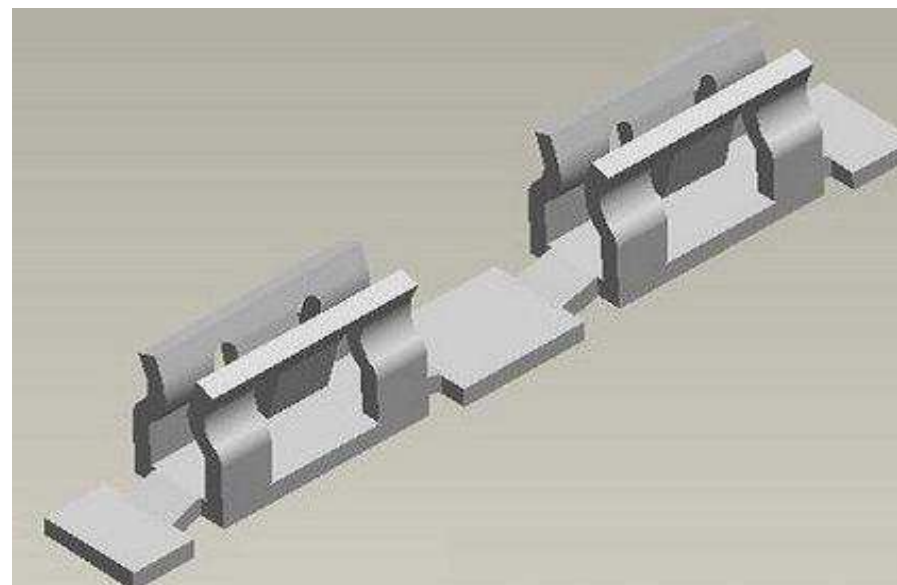
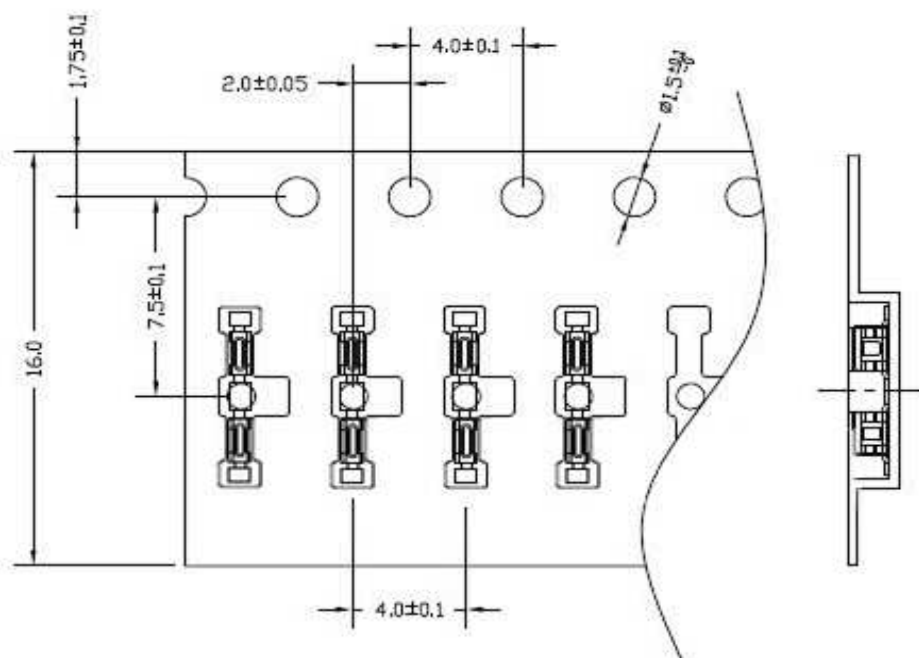
**SMD EMI-SHIELD Contacts
for PCB**

Part No.: **N53001**

Customer:

DRW:	Jason	CHKD	Wilson	MATL:	Wilson	TOLERANCE	Mason	DATE	20.09.2016
APPD:	Schumi			FINISH	Jamy		Sheet No.	2 from 7	

EDCON-COMPONENTS



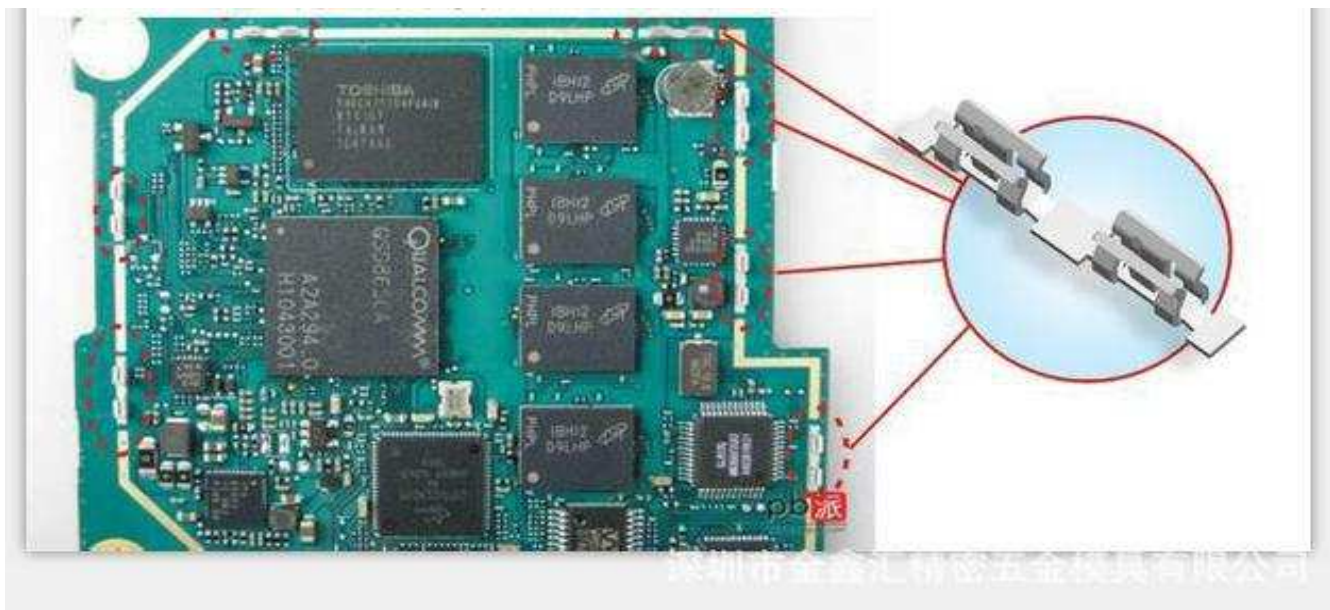
SMD EMI-SHIELD Contacts for PCB	
Part No.:	N53001
Customer:	

DRW:	Jason	CHKD	Wilson	MATL:	Wilson	TOLERANCE	Mason	DATE	20.09.2016
APPD:	Schumi			FINISH	Jamy		Sheet No.	3 from 7	

www.edcon-components.com

email: info@edcon-components.com

EDCON-COMPONENTS



**SMD EMI-SHIELD Contacts
for PCB**

Part No.: **N53001**

Customer:

DRW:	Jason	CHKD	Wilson	MATL:	Wilson	TOLERANCE	Mason	DATE	20.09.2016
APPD:	Schumi			FINISH	Jamy		Sheet No.	4 from 7	

www.edcon-components.com

email: info@edcon-components.com

EDCON-COMPONENTS



Size Order Code	Dimension (mm)			Shield Can Thickness	Plating	Material	Packing one Reel
	L	W	H				
A01	6,5	0,8	1,28	0,15~0,2	Sn	SUS	10000
A02	6,5	0,8	1,28	0,3	Sn	SUS	10000
A03	6,5	1,1	1,28	0,15~0,2	Sn	SUS	10000
A04	6,5	1,1	1,28	0,3	Sn	SUS	10000
A05	3,9	1,1	1,28	0,2	Sn	SUS	10000
A06	3,9	1,1	1,0	0,2	Sn	SUS	10000
A07	6,5	0,8	1,15	0,15~0,2	Sn	SUS	10000
A08	6,5	0,8	1,15	0,3	Sn	SUS	10000
A09	6,5	1,1	1,2	0,4	Sn	SUS	10000
A10	3,9	1,1	1,28	0,3	Sn	SUS	10000
A11	3,9	1,1	1,28	0,4	Sn	SUS	10000
A12	4,4	0,8	0,8	0,15	Sn	SUS	10000
A13	4,4	0,8	0,8	0,2	Sn	SUS	10000
A14	4,4	0,75	0,8	0,15	Sn	SUS	10000
A15	4,4	0,75	0,8	0,2	Sn	SUS	10000
A16	6,5	1,0	1,28	0,15/0,2	Sn	SUS	10000
A17	6,5	1,0	1,28	0,3	Sn	SUS	10000
A18	6,5	1,6	1,2	0,3	Sn	SUS	10000
A19							
A20							
A21							
A22							
A23							
A24							
A25							
A26							
A27							

SMD EMI-SHIELD Contacts for PCB	
Part No.:	N53001
Customer:	

DRW:	Jason	CHKD	Wilson	MATL:	Wilson	TOLERANCE	Mason	DATE	20.09.2016
APPD:	Schumi			FINISH	Jamy		Sheet No.		5 from 7



EDCON-COMPONENTS



Ordering Informations

Serie	Size Code	Material	Plating	Special funtion	Special funtion	Special funtion	Special funtion	ROHS	Packing Code	
-------	-----------	----------	---------	-----------------	-----------------	-----------------	-----------------	------	--------------	--

N53001	-	A01	SUS	SN	N	N	N	N	R	TR	
---------------	---	------------	------------	-----------	----------	----------	----------	----------	----------	-----------	--

Axx = Look Size Table	SUS= Material	SN= tinned	N= No function	N= No function	N= No function	N= No function	R= ROHS Conform	BU= Bulk Ware	
							N= NON ROHS Conform	TR= Tape Reel	

**SMD EMI-SHIELD Contacts
for PCB**

Part No.: **N53001**

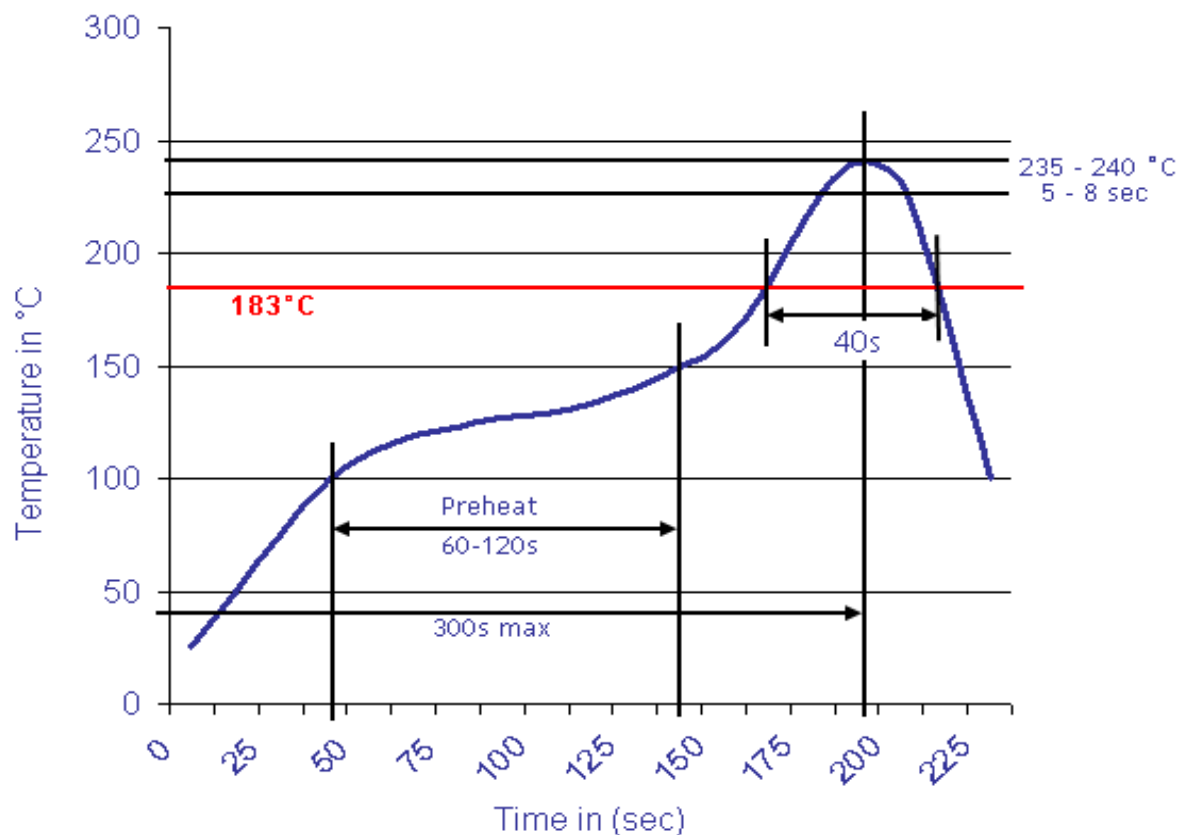
DRW:	Jason	CHKD	Wilson	MATL:	Wilson	TOLERANCE	Mason	DATE	20.09.2016
APPD:	Schumi			FINISH	Jamy		Sheet No.		6 from 7

Customer:



Soldering Profile Curve

Classification Reflow Profile (JEDEC J-STD-020C)



SMD EMI-SHIELD Contacts for PCB	
Part No.:	N53001
Customer:	

DRW:	Jason	CHKD	Wilson	MATL:	Wilson	TOLERANCE	Mason	DATE	20.09.2016
APPD:	Schumi			FINISH	Jamy		Sheet No.	7 from 7	

