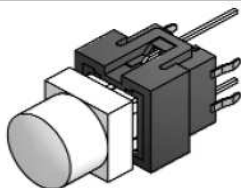


EDCON-COMPONENTS



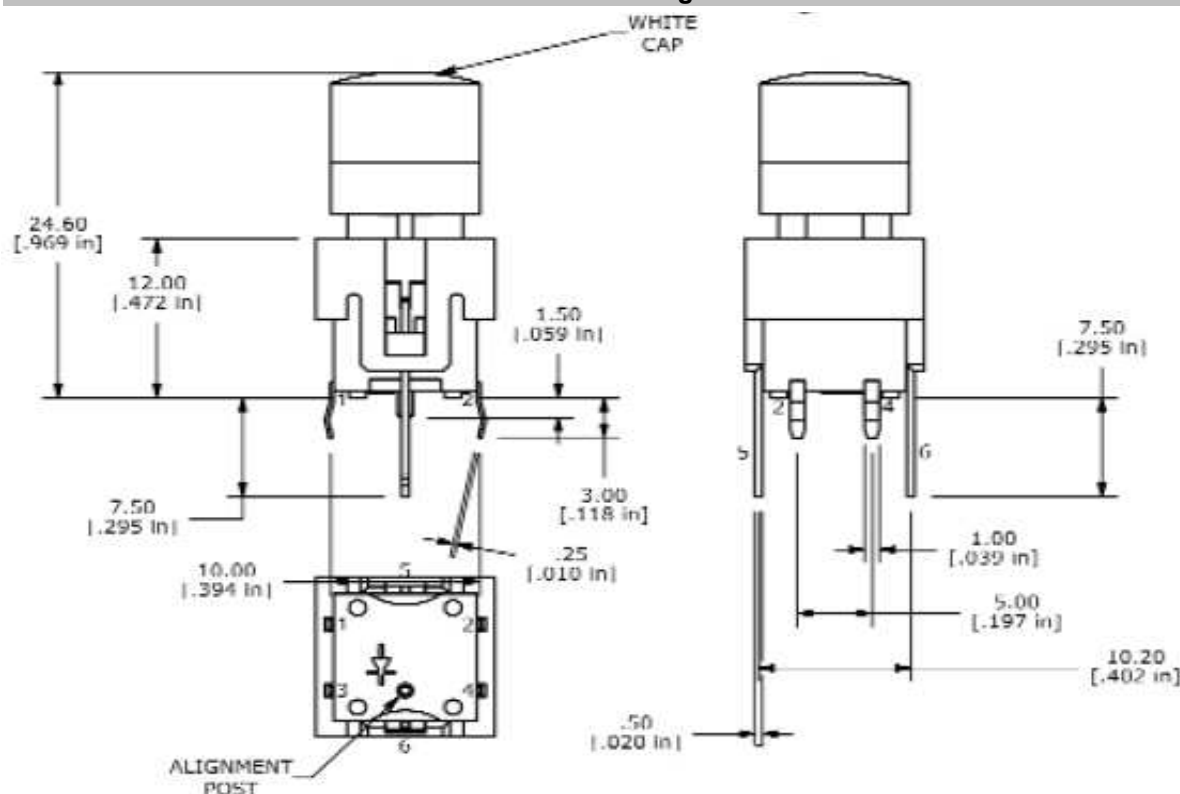
SPECIFICATION:

Voltage Rating:	20VDC
Current Rating:	1mA
Mechanical Life:	300.000cycles
Contact Resistance:	200m Ω max.@ 1,5VDC
Insulation Resistance:	100M Ω min. 100VDC
Dielectric Strenght:	250VAC/1min.
OperatingTemperature:	.-20°C ~ +70°C
Operating Force:	125gr. ± 35gr
Travel:	1,3mm ±0,3mm
Function:	Momentary OFF-(ON)

Material

1	Base	Nylon 66 UL 94V-0
2	Actuator	PC
3	Terminal:	Copper Alloy Gold Plated

Drawing



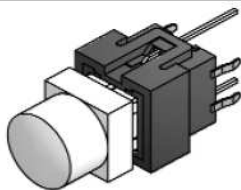
Illuminated PCB Switch

Part No.: **Q32027**

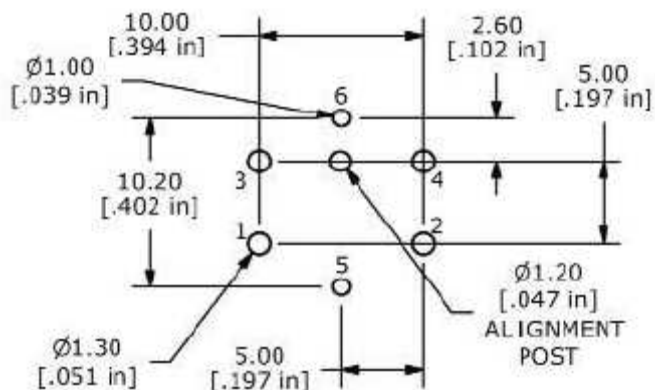
Customer:

DRW:	Jason	CHKD	Wilson	MATL:	Wilson	TOLERANCE	Mason	DATE	01.07.2016
APPD:	Schumi			FINISH	Jamy		Sheet No.	1 from 4	

EDCON-COMPONENTS

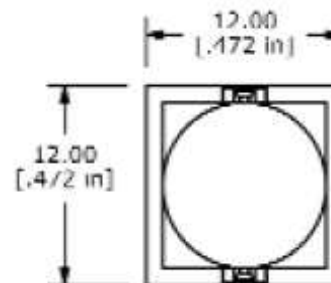
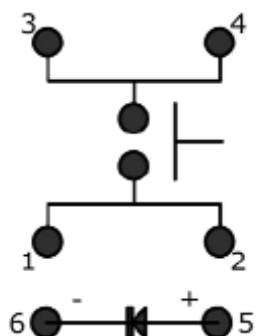


PCB Layout



LED Code	mA	Typ. V	Max. V		mcd/ typ		
Blue	20	3,5	4,0		1500		
Red	20	1,5	2,4		120		
Green	20	1,7	2,6		120		
Yellow	20	1,7	2,6		350		
White	20	3,5	4,0		2700		

Schematic



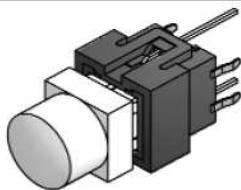
Illuminated PCB Switch

Part No.: **Q32027**

Customer:

DRW:	Jason	CHKD	Wilson	MATL:	Wilson	TOLERANCE	Mason	DATE	01.07.2016
APPD:	Schumi			FINISH	Jamy		Sheet No.	2 from 4	

EDCON-COMPONENTS



Ordering Informations

Serie	Special function	Contact Material	Operating Force	LED 1	Electrical life	LED 1	Special function	ROHS	Packing	
Q32027	N	G	121	W	304	W	N	R	TU	

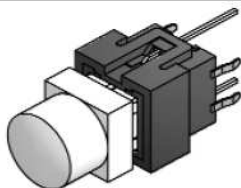
N= No Function	G= Gold Plated	121= 125gr	W= White	304= 300.000 Cycles	W= White	N= No Function	N= Non ROHS	
			B= Black		U= Blue			R= ROHS conform
			R= Red		G= Green			BU= Bulk Ware
			C= Clear		Y= Yellow			
					R= Red			
					N= without LED			

Illuminated PCB Switch

Part No.: **Q32027**

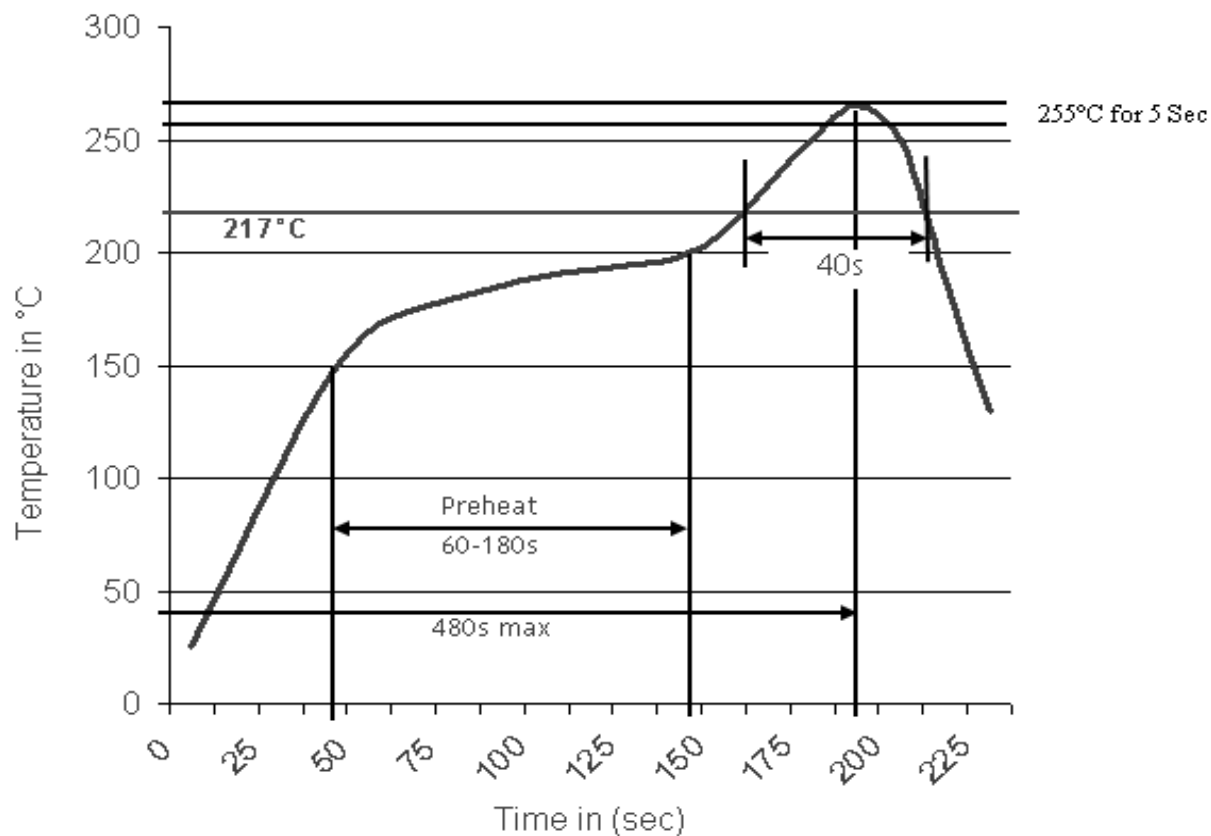
Customer:

DRW:	Jason	CHKD	Wilson	MATL:	Wilson	TOLERANCE	Mason	DATE	01.07.2016
APPD:	Schumi			FINISH	Jamy			Sheet No.	3 from 4



Soldering Profile Curve

Classification Reflow Profile (JEDEC J-STD-020C)



**Illuminated PCB
Switch**

Part No.: **Q32027**

Customer:

DRW:	Jason	CHKD	Wilson	MATL:	Wilson	TOLERANCE	Mason	DATE	01.07.2016
APPD:	Schumi			FINISH	Jamy		Sheet No.	4 from 4	