

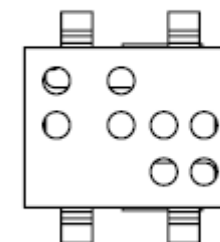
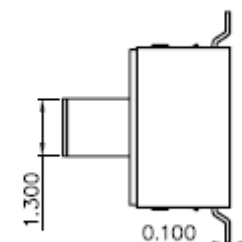
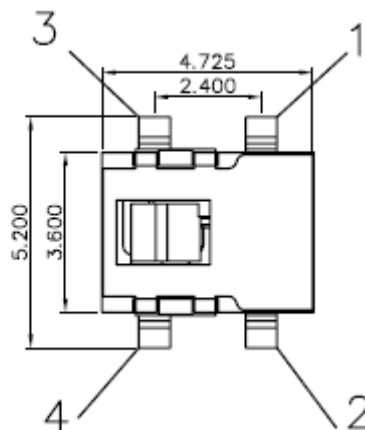
# EDCON-COMPONENTS



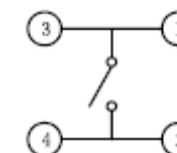
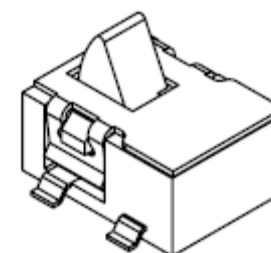
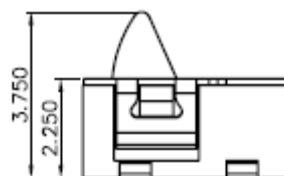
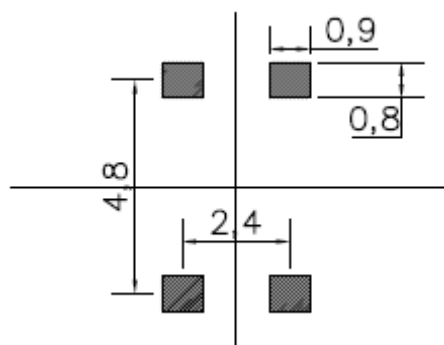
## SPECIFICATION:

Current Rating: 50m Ampere  
 Rated Voltage: DC 12V  
 Contact Resistance:  $\leq 150m\Omega$   
 Insulation Resistance:  $\geq 100M\Omega$   
 Compressive strength: AC250V 50Hz/1 min  
 Operating force:  $30 \pm 20gf$   
 Mechanical Life: 100000 cycles min.  
 Opeartion stroke:  $0.3 + 0,2mm$   
 Temperature Range:  $-30^{\circ}c \sim +85^{\circ}C$   
 Material: LCP.

## Drawing



## P.C.B Layout



**Detector Switch SMT**

Part No.: **Q22022**

Customer:

DRW:	Jason	CHKD	Wilson	MATL:	Wilson	TOLERANCE	Mason	DATE	16.07.2014
APPD:	Schumi			FINISH	Jamy		Sheet No.	1 from 2	

# EDCON-COMPONENTS



## Ordering Informations

Serie	Total height w. Body	Special function	Operating Force	Polarisation Peg	Electrical life	Special function	ROHS	Packing		
<b>Q22022</b>	<b>037</b>	<b>X</b>	<b>030</b>	<b>N</b>	<b>104</b>	<b>X</b>	<b>R</b>	<b>TR</b>		

<b>037</b> = 3,75mm	<b>X</b> = No special function	<b>030</b> = 30gr	<b>N</b> = without Peg	<b>104</b> = 100000 cycles	<b>X</b> = No special function	<b>N</b> = non ROHS	<b>BU</b> = Bulk Ware
						<b>R</b> = ROHS conform	<b>TU</b> = Tube Packing
							<b>TR</b> = Tape/Reel Packing

Detector Switch SMT

Part No.: **Q22022**

Customer:

DRW:	Jason	CHKD	Wilson	MATL:	Wilson	TOLERANCE	Mason	DATE	16.07.2014
APPD:	Schumi			FINISH	Jamy		Sheet No.		2 from 2