

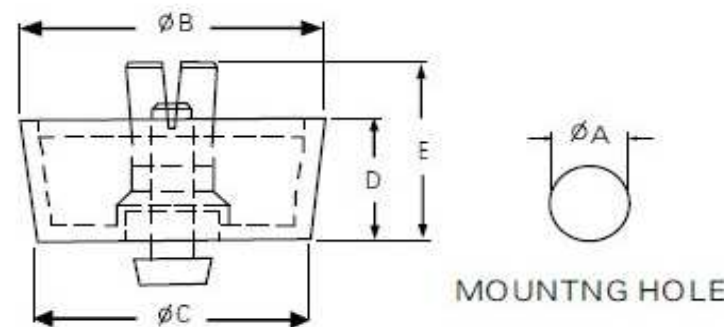
EDCON-COMPONENTS



Technical Discription

Material: PE/PP
 Flame Class: 94V-2
 Color: Black

Drawing



Diemsnion (mm)

Order Code	A	B	C	D	E	Chassic Thickness			
A01	8,0	20,8	19,8	6,4	11,8	1,0~2,5			
A02	8,0	20,0	18,0	10,0	15,4	1,0~2,5			
A03	8,0	23,7	19,5	13,7	19,2	1,0~2,5			
A04	8,0	25,0	23,5	6,5	12,5	1,0~2,5			
A05	8,0	30,0	27,7	12,8	18,8	1,0~2,5			
A06	10,0	28,5	26,5	8,2	14,0	1,0~3,5			
A07	5,0	12,7	12,0	4,4	8,5	1,0~2,0			
A08	5,0	15,7	15,0	4,4	8,5	1,0~2,0			
A09	8,0	20,0	18,6	4,0	7,0	1,0~2,0			
A10	8,0	23,8	22,0	5,0	10,0	1,0~2,5			
A11	10,0	31,5	28,5	7,8	13,6	1,0~3,5			
A12	8,0	20,0	18,0	15,0	20,8	1,0~3,0			
A13	8,0	20,0	18,0	18,0	24,3	0,8~1,0			
A14	8,0	19,5	18,7	5,0	10,5	0,8~2,0			
A15	8,0	20,0	19,3	20,5	25,6	0,8~2,0			
A16	8,0	19,2	17,2	7,9	12,1	0,8~1,2			
A17	8,0	23,0	21,0	8,0	13,3	0,8~2,0			
A18	8,0	24,0	20,0	10,5	5,3	0,8~2,0			
DRW:	Jason	CHKD	Wilson	MATL:	Wilson	TOLERANCE	Mason	DATE	11.07.2014
APPD:	Schumi			FINISH	Jamy		Sheet No.		1 from 2

MOUNTING HOLE

Feet Press-Mounted

Part No.: **N29015**

Customer: _____
 email: info@edcon-components.com

EDCON-COMPONENTS



Ordering Informations

Terminal

Serie	Size Code	Color of Body	Body Material	special function	ROHS	Packing
N29015	A01	BK	PE	X	R	BU
	A01=Size Code Table	BK= Black	PE= PE/PP	X= No special	R= ROHS Conform N= NON ROHS Conform	BU= Bulk-Ware

Feet Press-Mounted
Part No.: N29015
Customer:

DRW:	Jason	CHKD	Wilson	MATL:	Wilson	TOLERANCE	Mason	DATE	11.07.2014
APPD:	Schumi			FINISH	Jamy		Sheet No.	2 from 2	