

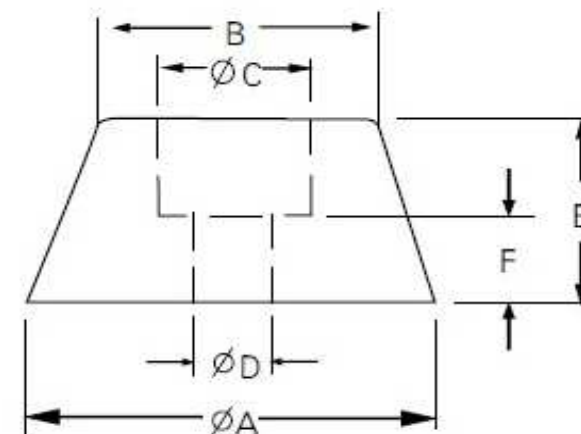
EDCON-COMPONENTS



Technical Discription

Material: ABS
 Flame Class: 94V-2
 Color: Black

Drawing



Diemsnion (mm)

Order Code	A	B	C	D	E	F	Material
A01	14,8	8,0	6,0	3,0	7,0	3,1	P.V.C
A02	11,5	8,7	5,6	3,2	7,4	3,3	Rubber
A03	16,0	13,0	6,0	3,0	7,8	4,0	Rubber
A04	17,2	16,2	9,0	4,0	7,0	3,0	Rubber
A05	20,2	18,4	10,0	3,0	8,0	4,0	P.V.C
A06	25,0	21,5	8,5	3,3	5,8	2,8	P.V.C
A07	20,0	15,0	9,8	3,0	10,5	5,0	P.V.C
A08	20,0	15,0	9,8	4,0	10,5	5,0	P.V.C
A09	11,0	8,8	6,0	3,5	5,7	2,3	P.V.C
A10	18,0	13,7	7,8	3,6	9,8	2,7	P.P
A11	28,0	21,2	9,7	3,8	20,0	6,0	P.V.C

Feet Screw-Mounted

Part No.: **N29014**

DRW:	Jason	CHKD	Wilson	MATL:	Wilson	TOLERANCE	Mason	DATE	11.07.2014
APPD:	Schumi			FINISH	Jamy		Sheet No.		1 from 2

Customer:

EDCON-COMPONENTS



Ordering Informations

Terminal

Serie	Size Code	Color of Body	Body Material	special function	ROHS	Packing
N29014	A01	BK	PC	X	R	BU
A01=Size Code Table		BK= Black	PC= P.V.C	X= No special	R= ROHS Conform	BU= Bulk-Ware
			PP= P.P		N= NON ROHS Conform	
			RU= Rubber			

Feet Screw-Mounted

Part No.: **N29014**

DRW:	Jason	CHKD	Wilson	MATL:	Wilson	TOLERANCE	Mason	DATE	11.07.2014	Customer:
APPD:	Schumi			FINISH	Jamy		Sheet No.	2 from 2		