

# Data Sheet

## Screwless Terminal Block

**Pitch: 7,50 mm**

**Serie: A11Q046**

### Customer Information for special Item

**EDCON Customer : 0**

**Customer Version No. : 0**

# EDCON-COMPONENTS



## Technical Discription

## Drawing (Dimension in mm)

### Electrical

Standard	IEC
Rated voltage	300V
Rated current	30A
Wire range	24-8 AWG   0.2-6mm <sup>2</sup>
Withstanding voltage	

### Mechanical

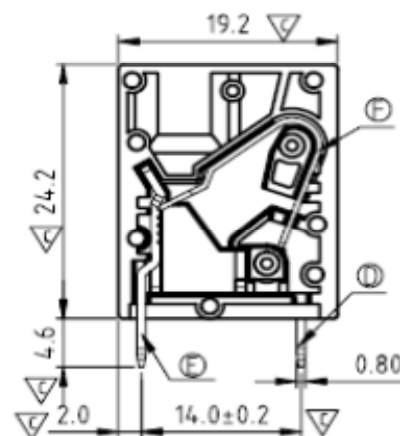
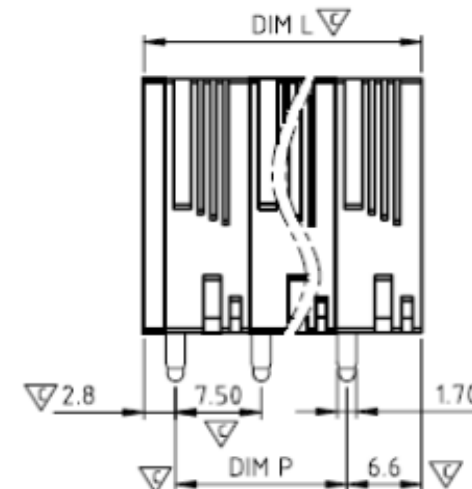
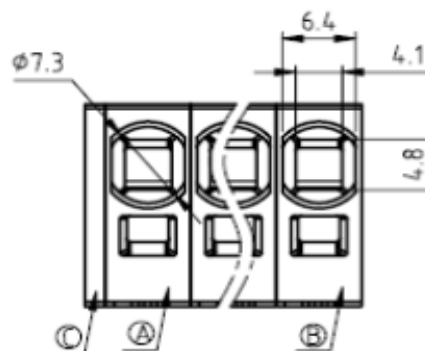
Operating temperature	-40°C ~ +105°C
Strip length	15mm

### Dimensions

Pitch	7.50mm
Poles	1P ~ 16P

### Material

Housing	PA66 (UL94V-0)
Pin	Phosphor Bronze, Tin plated
Spring Clamp	Stainless steel



### Screwless Terminal Block

Part No.: **A11Q046**

Customer:

DRW:	Jason	CHKD	Wilson	MATL:	Wilson	TOLERANCE	Mason	DATE	10.03.2015
APPD:	Schumi			FINISH	Jamy		Sheet No.		1 from 4

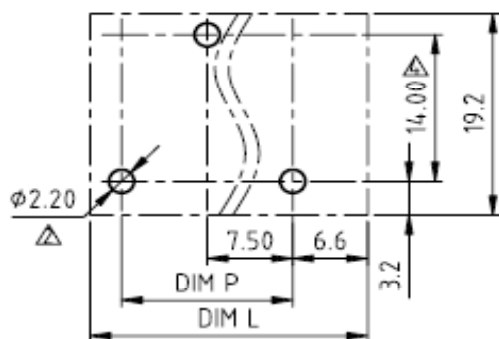
# EDCON-COMPONENTS



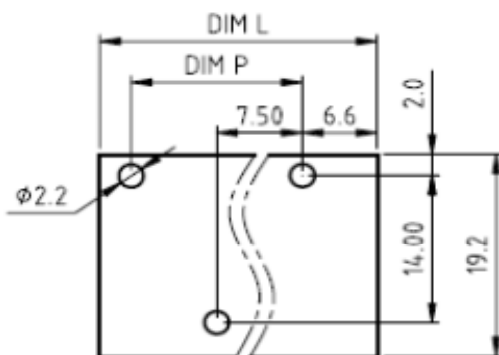
## Drawing (Dimension in mm)

## Dimensions (mm)

Layout A



Layout B



No. of Pos.	L	Tol. P	P	Tol. P
02	24,40	± 0,35	15,00	± 0,35
03	24,35	± 0,35	22,50	± 0,35
04	31,85	± 0,35	30,00	± 0,35
05	39,35	± 0,35	37,50	± 0,35
06	46,85	± 0,35	45,00	± 0,35
07	54,35	± 0,35	52,50	± 0,35
08	61,85	± 0,35	60,00	± 0,35
09	69,35	± 0,35	67,50	± 0,35
10	76,85	± 0,35	75,00	± 0,35
11	84,35	± 0,35	82,50	± 0,35
12	91,85	± 0,35	90,00	± 0,35
13	99,35	± 0,35	97,50	± 0,35
14	106,85	± 0,35	105,00	± 0,35
15	114,35	± 0,35	112,50	± 0,35
16	121,85	± 0,35	120,00	± 0,35

### Screwless Terminal Block

Part No.: **A11Q046**

Customer:

DRW:	Jason	CHKD	Wilson	MATL:	Wilson	TOLERANCE	Mason	DATE	10.03.2015
APPD:	Schumi			FINISH	Jamy		Sheet No.	2 from 4	

# EDCON-COMPONENTS



## Ordering Informations

Serie	No. of Pos.	Body Color	Approval	Approval Code	Layout Type	ROHS	Packing	EDCON Cust. No.	Customer Version
-------	-------------	------------	----------	---------------	-------------	------	---------	-----------------	------------------

<b>A11Q046</b>	<b>02</b>	<b>PG</b>	<b>N</b>	<b>N</b>	<b>A</b>	<b>R</b>	<b>B</b>		
----------------	-----------	-----------	----------	----------	----------	----------	----------	--	--

Pitch	02= Number of Pos.		N= No Approval	N= NON Approval	A= Layout Type A	R= ROHS Conform	B= Standard Package	xxxxxx= Customer Number	xxx= Customer Version ??(Printing)
-------	--------------------	--	----------------	-----------------	------------------	-----------------	---------------------	-------------------------	------------------------------------

7,50	Standard 2 ~ 12Pos.		1= Approval for Material	A= UL /UR Approval Please consult EDCON for available	B= Layout Type B	N= NON ROHS Conform	I= Individual Package		
		PG= Phoenix Green	2= Approval for Terminal Block	B= VDE Approval Please consult EDCON for available					
				C= TÜV Approval Please consult EDCON for available					

**Screwless Terminal Block**

Part No.: **A11Q046**

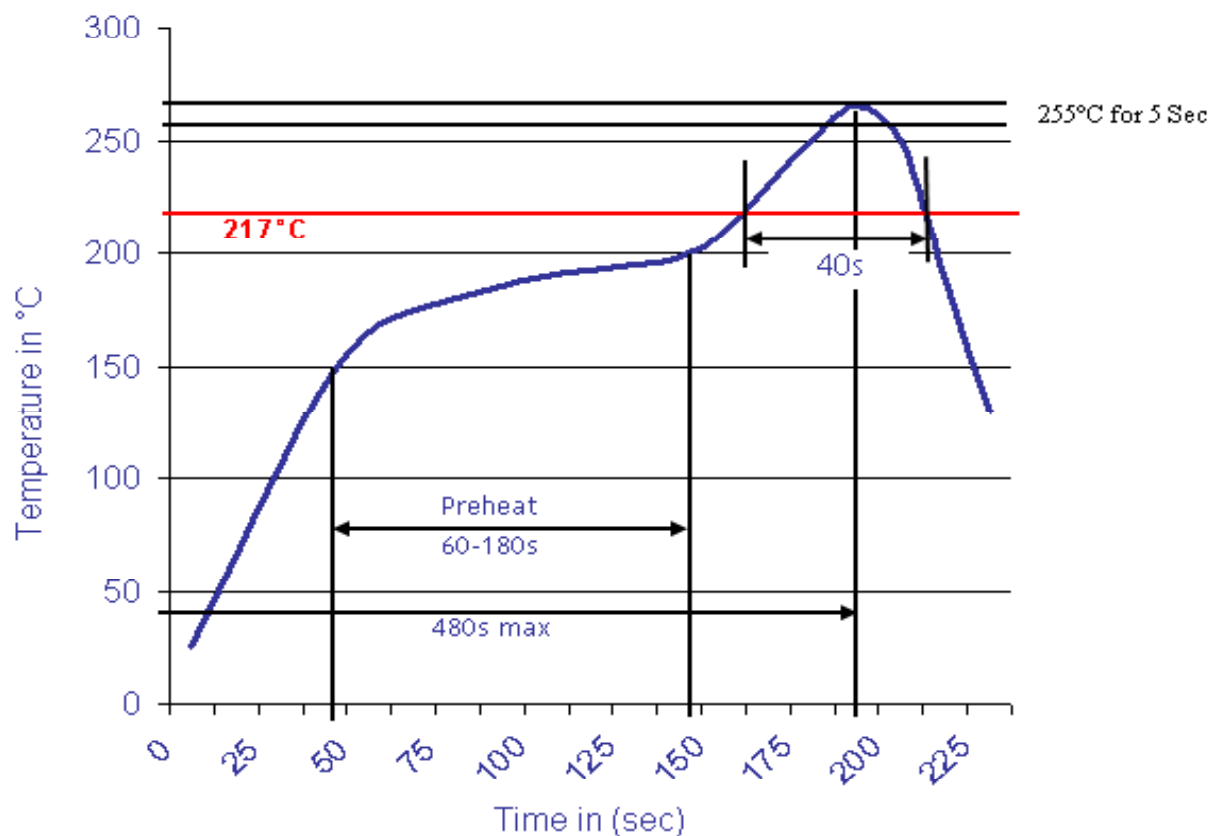
DRW:	Jason	CHKD	Wilson	MATL:	Wilson	TOLERANCE	Mason	DATE	10.03.2015
APPD:	Schumi			FINISH	Jamy		Sheet No.		3 from 4

Customer:



Soldering Profile Curve

Classification Reflow Profile (JEDEC J-STD-020C)



**Screwless Terminal Block**

Part No.: **A11Q046**

Customer:

DRW:	Jason	CHKD	Wilson	MATL:	Wilson	TOLERANCE	Mason	DATE	10.03.2015
APPD:	Schumi			FINISH	Jamy		Sheet No.	4 from 4	