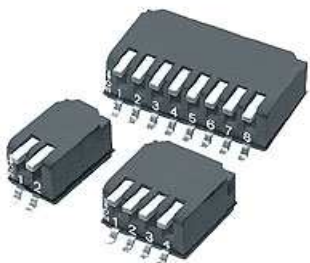


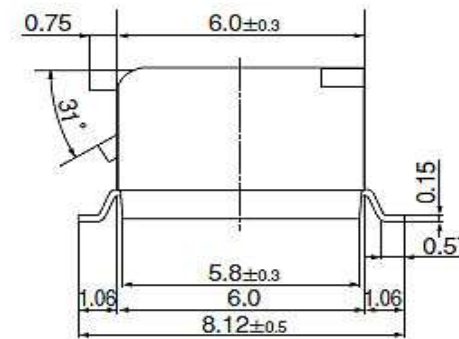
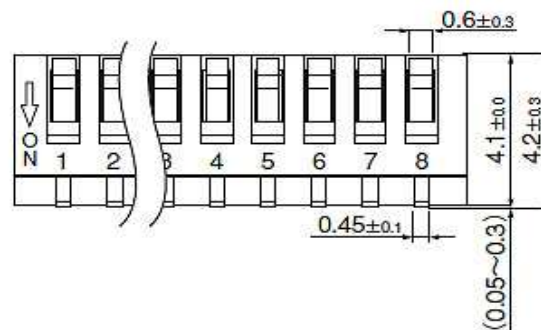
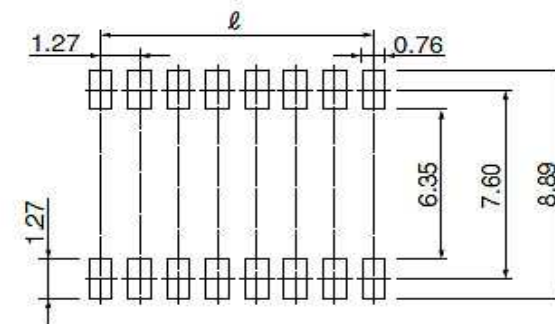
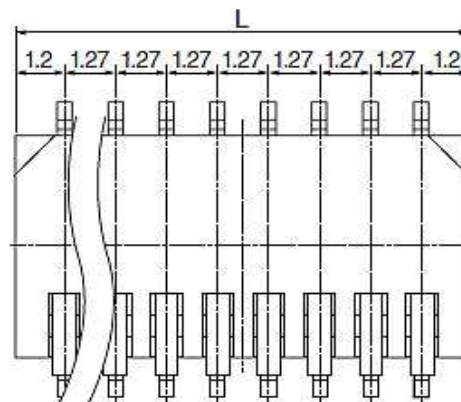
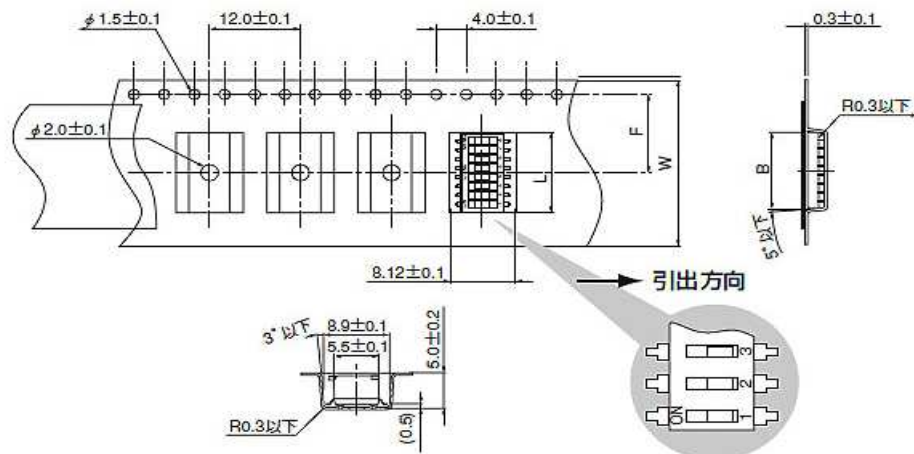
EDCON-COMPONENTS



SPECIFICATION:

Voltage Rating: 12VDC
 Current Rating: 50mA
 Mechanical Life: 100000 cycles
 Contact Resistance: 100m Ω max. (initial)
 Insulation Resistance: 10M Ω min. 500VDC
 Dielectric Strength: 250VAC/1min.
 Operating Temperature: -25°C ~ +70°C
 Number of Pos. 2 ~ 12P

Drawing



SMT DIP-Switch P=1,27mm

Part No.: Q26018

DRW:	Jason	CHKD	Wilson	MATL:	Wilson	TOLERANCE	Mason	DATE	01.07.2014
APPD:	Schumi			FINISH	Jamy		Sheet No.		1 from 3

Customer:

EDCON-COMPONENTS



Ordering Informations

Serie	No. of Pos.	Body color	Actuator	Fill with 0	Fill with 0	Fill with 0	ROHS	Packing		
Q26018	02	BK	L	X	X	X	R	TR		

02= 02 ~ 12Pos	BK = Black Body	L= Long Actuator	X= no function	X= no function	X= no function	N= Non ROHS	TR = Tape/Reel Packing
						R= ROHS conform	TU= Tube Packing

**SMT DIP-Switch
P=1,27mm**

Part No.: **Q26018**

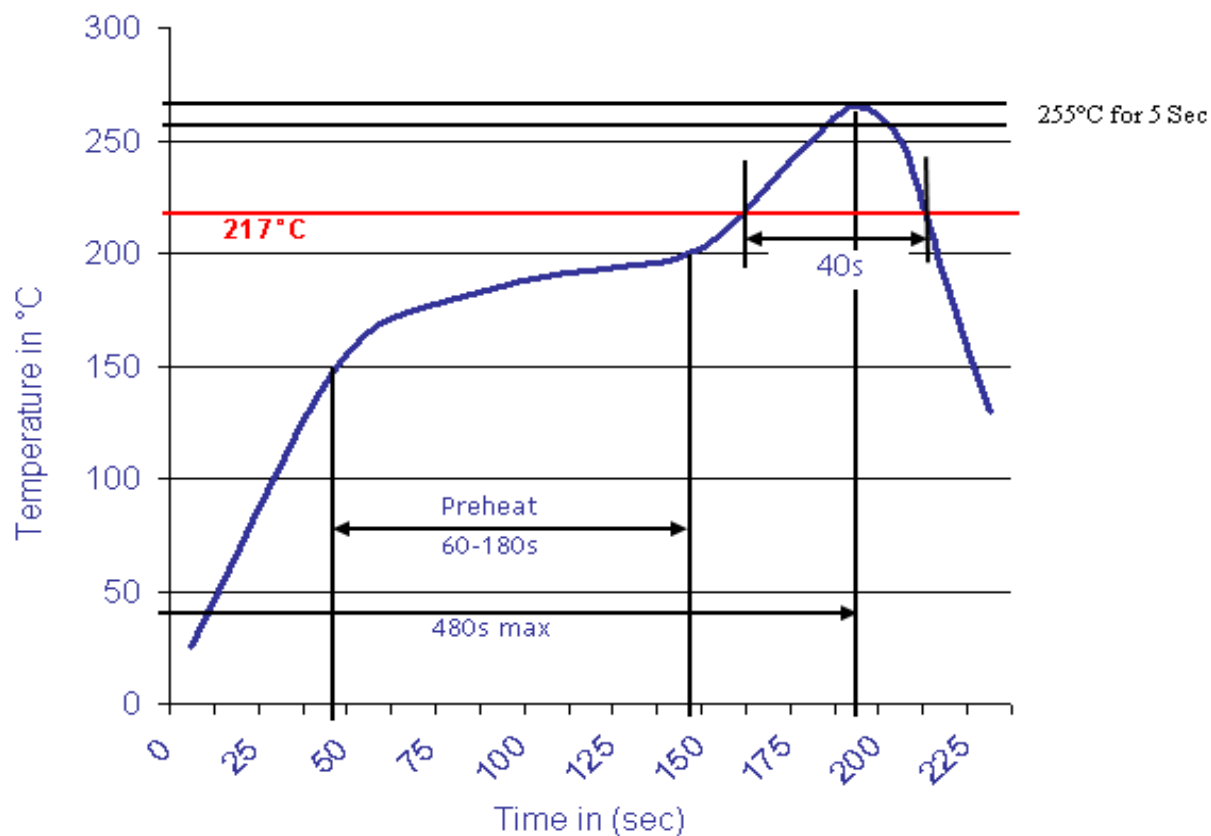
DRW:	Jason	CHKD	Wilson	MATL:	Wilson	TOLERANCE	Mason	DATE	01.07.2014
APPD:	Schumi			FINISH	Jamy		Sheet No.		2 from 3

Customer:



Soldering Profile Curve

Classification Reflow Profile (JEDEC J-STD-020C)



SMT DIP-Switch	
P=1,27mm	
Part No.:	Q26018
Customer:	

DRW:	Jason	CHKD	Wilson	MATL:	Wilson	TOLERANCE	Mason	DATE	01.07.2014
APPD:	Schumi			FINISH	Jamy		Sheet No.	3 from 3	

