



**DISCRIPTION**

**FEATURES**

Excellent solderability and high heat resist.  
 Excellent terminal strength construction  
 Packed in embossed carrier tape  
 used for automatic machine

**OPTIONS**

Tape & Reel is Standard ( Qty: 2.000 Pcs )  
 Bulk Packing Available for smaller quantities  
 Tolerance: K=10% , (M=20% is Standard)  
 Tighter Tolerance available ( MOQ on request)  
 Other ranges ( MOQ on request)

**APPLICATIONS**

Power supply for VCR, OA  
 equipment,  
 LCD Television set  
 Notebooks  
 DC to DC convertres  
 DC to AC convertres  
 Network Systems  
 Computer Products

**Approval**



**ELECTRICAL SPECIFICATIONS**

Properties	Test conditions		Value	Unit	Tol.
Inductance	1 Mhz	<b>L</b>	4,7	<b>µH</b>	<b>+/- 20%</b>
Q factor		<b>Q</b>			<b>min.</b>
DC-resistance	@ 20°C	<b>DCR typ.</b>		<b>Ohm</b>	<b>typ.</b>
DC-resistance	@ 20°C	<b>DCR max.</b>	0,095	<b>Ohm</b>	<b>max.</b>
Self-Res. Freq.		<b>SRF</b>		<b>Mhz</b>	<b>min.</b>
Test-Freq.	100kHz/0,3V	<b>Idc</b>	1,40	<b>mA</b>	<b>min.</b>
Rated Current		<b>Irms</b>		<b>mA</b>	<b>max.</b>
Saturation Current		<b>Isat</b>		<b>mA</b>	<b>typ.</b>

1. This electronic component is meant to be used in general electronic equipment. Before the incorporation of this component into any equipment with higher and more reliable requirements such as aviation, aerospace, submarine, nuclear control, transportation, transportation signal, disaster prevention, medical, public information network, etc. or if there is a possibility of injuries or damages to the human body, Edcon –Components must be informed before the stage of design-in. Evaluation checks for safety have to be performed on each electronic components used in electrical circuits that require high safety and reliability functions.

**Wire Wound Power Inductor**

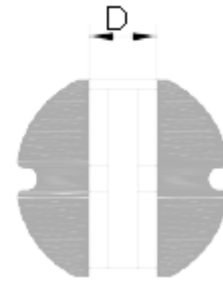
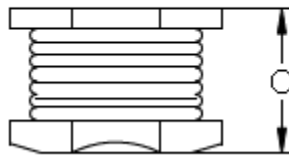
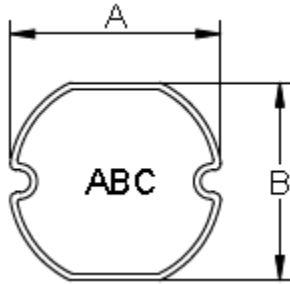
Part No.: **S18022-4R7**

Customer:

DRW:	Young	CHKD	Jordan	MATL:	Chu Chi	DATE	08.04.2018
APPD:	Pong	Man	503481	FINISH	Vienna	Sheet	1 from 3



**TECHNICAL Dimensions**



Serie	A (mm)	B (mm)	C (mm)	D (mm) ref			
<b>S18022-4R7</b>	4,5±0,3	4,0±0,3	2,0±0,3	1,4			

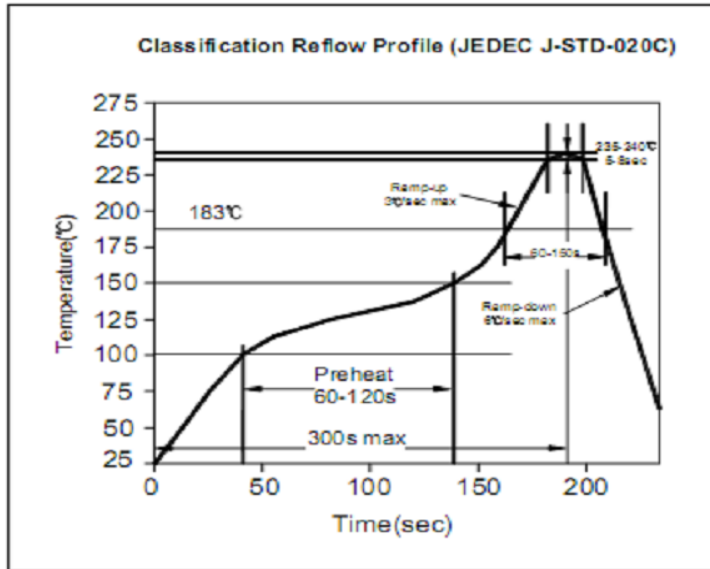
<b>Wire Wound Power Inductor</b>	
Part No.:	<b>S18022-4R7</b>
Customer:	

DRW:	Young	CHKD	Jordan	MATL:	Chu Chi	DATE	08.04.2018
APPD:	Pong	Man	503481	FINISH	Vienna	Sheet	2 from 3

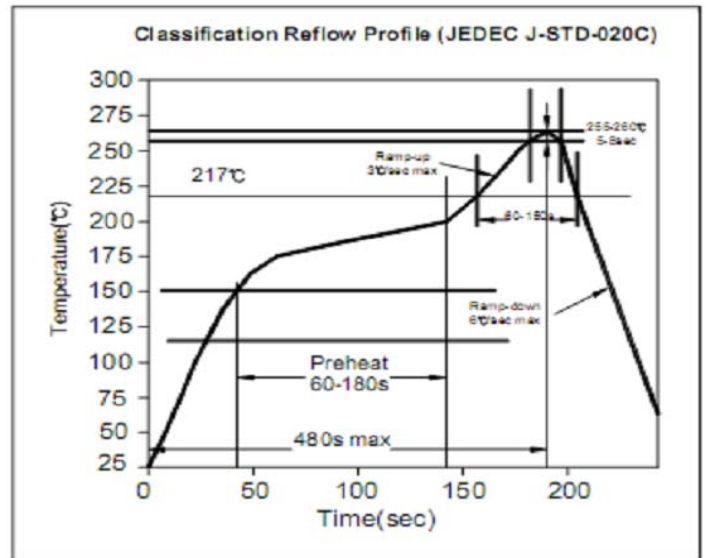


## SOLDERING CURVE

### LEAD SOLDER PROCESS



### LEAD FREE SOLDER PROCESS



## Ordering Information

Serie and Range	Tolerance	ROHS	Packing		
S18022-4R7	M	R	TR		

K= 10%	R= ROHS Conform	BU= Bulk Ware
M=20%	N= non ROHS	TR= Tape Reel

1. This electronic component is meant to be used in general electronic equipment. Before the incorporation of this component into any equipment with higher and more reliable requirements such as aviation, aerospace, submarine, nuclear control, transportation, transportation signal, disaster prevention, medical, public information network, etc. or if there is a possibility of injuries or damages to the human body, Edcon -Components must be informed before the stage of design-in. Evaluation checks for safety have to be performed on each electronic components used in electrical circuits that require high safety and reliability functions.

### Wire Wound Power Inductor

Part No.: **S18022-4R7**

Customer:

DRW:	Young	CHKD	Jordan	MATL:	Chu Chi	DATE	08.04.2018
APPD:	Pong	Man	503481	FINISH	Vienna	Sheet	3 from 3