



DISCRIPTION

FEATURES

Excellent solderability and high heat resist.
Excellent terminal strength construction
Packed in embossed carrier tape
used for automatic machine

OPTIONS

Tape & Reel is Standard (Qty: 2.000 Pcs)
Bulk Packing Available for smaller quantities
Tolerance: K=10% , (M=20% is Standard)
Tighter Tolerance available (MOQ on request)
Other ranges (MOQ on request)

APPLICATIONS

Power supply for VCR, OA
equipment,
LCD Television set
Notebooks
DC to DC convertres
DC to AC convertres
Network Systems
Computer Products

Approval



ELECTRICAL SPECIFICATIONS

Properties	Test conditions		Value	Unit	Tol.
Inductance	1 Mhz	L	2,7	µH	+/- 20%
Q factor		Q			min.
DC-resistance	@ 20°C	DCR typ.		Ohm	typ.
DC-resistance	@ 20°C	DCR max.	0,065	Ohm	max.
Self-Res. Freq.		SRF		Mhz	min.
Test-Freq.	100kHz/0,3V	Idc	1,5	mA	min.
Rated Current		Irms		mA	max.
Saturation Current		Isat		mA	typ.

1. This electronic component is meant to be used in general electronic equipment. Before the incorporation of this component into any equipment with higher and more reliable requirements such as aviation, aerospace, submarine, nuclear control, transportation, transportation signal, disaster prevention, medical, public information network, etc. or if there is a possibility of injuries or damages to the human body, Edcon –Components must be informed before the stage of design-in. Evaluation checks for safety have to be performed on each electronic components used in electrical circuits that require high safety and reliability functions.

Wire Wound Power Inductor

Part No.: **S18022-2R7**

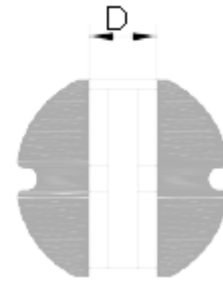
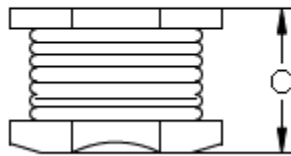
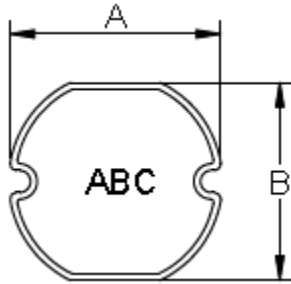
Customer:

DRW:	Young	CHKD	Jordan	MATL:	Chu Chi	DATE	08.04.2018
APPD:	Pong	Man	503481	FINISH	Vienna	Sheet	1 from 3

Copyright by S.Tiede



TECHNICAL Dimensions



Serie	A (mm)	B (mm)	C (mm)	D (mm) ref			
S18022-2R7	4,5±0,3	4,0±0,3	2,0±0,3	1,4			

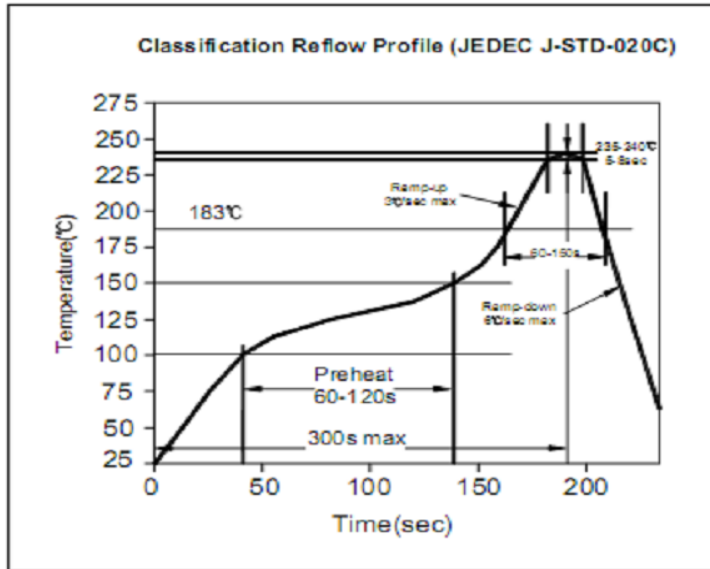
Wire Wound Power Inductor	
Part No.:	S18022-2R7
Customer:	

DRW:	Young	CHKD	Jordan	MATL:	Chu Chi	DATE	08.04.2018
APPD:	Pong	Man	503481	FINISH	Vienna	Sheet	2 from 3

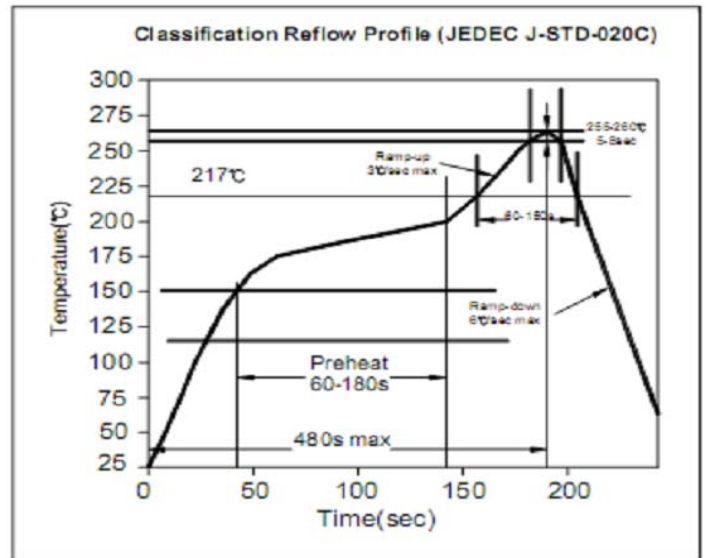


SOLDERING CURVE

LEAD SOLDER PROCESS



LEAD FREE SOLDER PROCESS



Ordering Information

Serie and Range	Tolerance	ROHS	Packing		
S18022-2R7	M	R	TR		

K= 10%	R= ROHS Conform	BU= Bulk Ware
M=20%	N= non ROHS	TR= Tape Reel

1. This electronic component is meant to be used in general electronic equipment. Before the incorporation of this component into any equipment with higher and more reliable requirements such as aviation, aerospace, submarine, nuclear control, transportation, transportation signal, disaster prevention, medical, public information network, etc. or if there is a possibility of injuries or damages to the human body, Edcon-Components must be informed before the stage of design-in. Evaluation checks for safety have to be performed on each electronic components used in electrical circuits that require high safety and reliability functions.

Wire Wound Power Inductor

Part No.: **S18022-2R7**

Customer:

DRW:	Young	CHKD	Jordan	MATL:	Chu Chi	DATE	08.04.2018
APPD:	Pong	Man	503481	FINISH	Vienna	Sheet	3 from 3