



# DATA SHEET

## Uni-directional Microfon

### Serie: Y24049

<b>Uni-directional Microfon</b>
Serie No.: <b>Y24049</b>
Customer:

DRW:	Jason	CHKD	Wilson	MATL:	Wilson	TOLERANCE	Mason	DATE	16.04.2013
APPD:	Schumi			FINISH	Jamy		Sheet No.		1 from 5

# EDCON-COMPONENTS

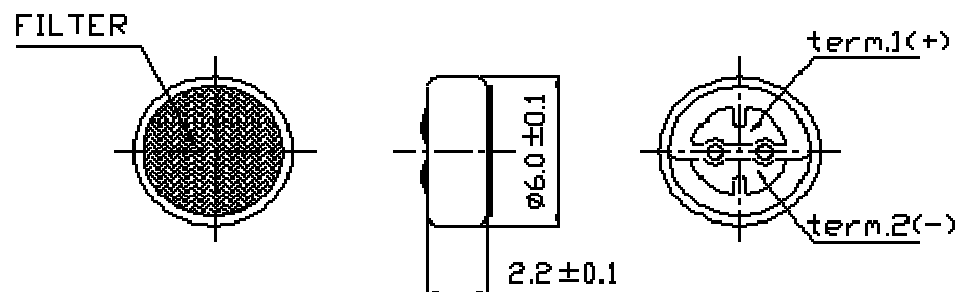


## Specifications

## Dimension

Impedance:	Less than 680 $\Omega$
Directivity:	Noise-Cancelling
Frequency:	20 ~ 16000Hz
Standard Operation Voltage:	2,0Volt
Current Consumption	Max. 0,5mA
Sensitivity reduction:	Sensitivity 3dB at 1,5V
S/N ratio	More than 60dB

Sensitivity: 1KHz, 0dB=1V/Pa  
 . 54  $\pm$  4dB (at L=50cm)



<b>Uni-directional Microfon</b>	
Part No.:	<b>Y24049</b>
Customer:	

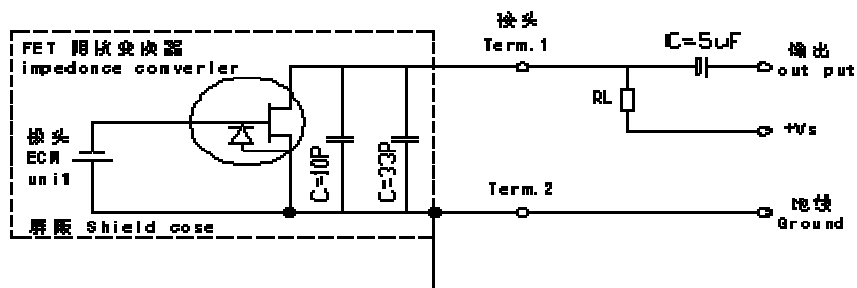
DRW:	Jason	CHKD	Wilson	MATL:	Wilson	TOLERANCE	Mason	DATE	16.04.2013
APPD:	Schumi			FINISH	Jamy		Sheet No.	2 from 5	

# EDCON-COMPONENTS

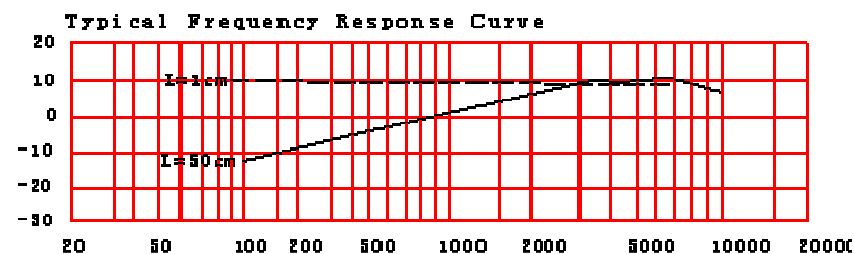


Schematic Diagramm

Frequency Responce



## Frequency Response



<b>Uni-directional Microfon</b>	
Part No.:	<b>Y24049</b>
Customer:	

DRW:	Jason	CHKD	Wilson	MATL:	Wilson	TOLERANCE	Mason	DATE	16.04.2013
APPD:	Schumi			FINISH	Jamy		Sheet No.	3 from 5	

# EDCON-COMPONENTS



## Ordering Informations

Serie	Selection table	Special function	Special function	ROHS	Packing Code					
Y24049	54	N	N	R	TU					

54= db	N= no special function	N= no special function	R= ROHS Conform	TU= Tube Packing
			N= NON ROHS Conform	TY= TRAY Packing
				IV= Individual Packing

<b>Uni-directional Microfon</b>	
Part No.:	<b>Y24049</b>
Customer:	

DRW:	Jason	CHKD	Wilson	MATL:	Wilson	TOLERANCE	Mason	DATE	16.04.2013
APPD:	Schumi			FINISH	Jamy		Sheet No.		4 from 5



Soldering Profile Curve

Classification Reflow Profile (JEDEC J-STD-020C)



<b>Uni-directional Microfon</b>	
Part No.:	<b>Y24049</b>
Customer:	

DRW:	Jason	CHKD	Wilson	MATL:	Wilson	TOLERANCE	Mason	DATE	16.04.2013
APPD:	Schumi			FINISH	Jamy		Sheet No.	5 from 5	