



DATA SHEET

Uni-directional Microfon

Serie: Y24048

Uni-directional Microfon	
Serie No.:	Y24048
Customer:	

DRW:	Jason	CHKD	Wilson	MATL:	Wilson	TOLERANCE	Mason	DATE	16.04.2013
APPD:	Schumi			FINISH	Jamy		Sheet No.		1 from 5

EDCON-COMPONENTS



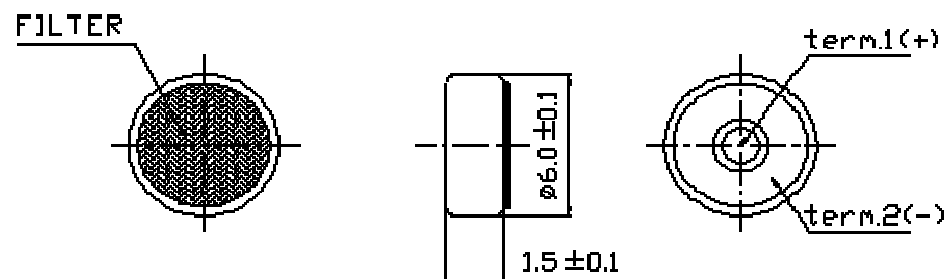
Specifications

Impedance:	Less than 2,2K Ω
Directivity:	Omnidirectional
Frequency:	20 ~ 16000Hz
Standard Operation Voltage:	2,0Volt
Current Consumption	Max. 0,5mA
Sensitivity reduction:	Sensitivity 3dB at 1,5V
S/N ratio	More than 60dB

Sensitivity: 1KHz, 0dB=1V/Pa

- . 46 \pm 2dB
- . 44 \pm 2dB
- . 42 \pm 2dB
- . 40 \pm 2dB
- . 38 \pm 2dB
- . 36 \pm 2dB

Dimension



Uni-directional Microfon
Part No.: Y24048
Customer:

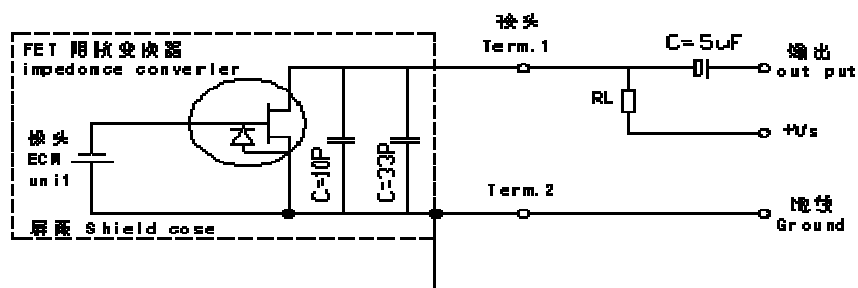
DRW:	Jason	CHKD	Wilson	MATL:	Wilson	TOLERANCE	Mason	DATE	16.04.2013
APPD:	Schumi			FINISH	Jamy		Sheet No.	2 from 5	

EDCON-COMPONENTS

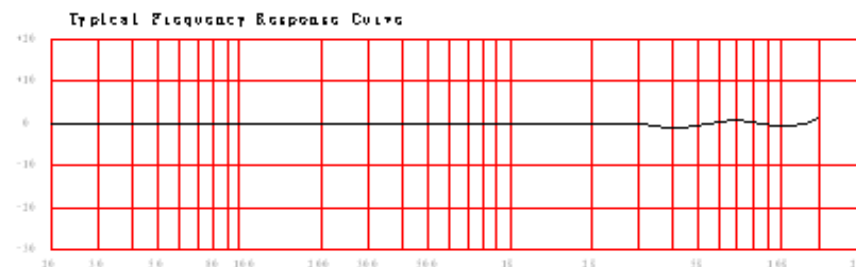


Schematic Diagramm

Frequency Responce



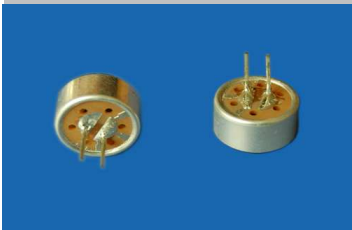
Frequency Responce



Uni-directional Microfon
Part No.: Y24048
Customer:

DRW:	Jason	CHKD	Wilson	MATL:	Wilson	TOLERANCE	Mason	DATE	16.04.2013
APPD:	Schumi			FINISH	Jamy		Sheet No.		3 from 5

EDCON-COMPONENTS



Ordering Informations

Serie	Selection table	Special function	Special function	ROHS	Packing Code					
Y24048	46	N	N	R	TU					

46= db	N= no special function	N= no special function	R= ROHS Conform	TU= Tube Packing
44= db			N= NON ROHS Conform	TY= TRAY Packing
42= db				IV= Individual Packing
40= db				
38= db				
36= db				

Uni-directional Microfon	
Part No.:	Y24048
Customer:	

DRW:	Jason	CHKD	Wilson	MATL:	Wilson	TOLERANCE	Mason	DATE	16.04.2013
APPD:	Schumi			FINISH	Jamy		Sheet No.		4 from 5



Soldering Profile Curve

Classification Reflow Profile (JEDEC J-STD-020C)



Uni-directional Microfon	
Part No.:	Y24048
Customer:	

DRW:	Jason	CHKD	Wilson	MATL:	Wilson	TOLERANCE	Mason	DATE	16.04.2013
APPD:	Schumi			FINISH	Jamy		Sheet No.	5 from 5	