



DATA SHEET

Uni-directional Microfon

Serie: Y24047

Uni-directional Microfon
Serie No.: Y24047
Customer:

DRW:	Jason	CHKD	Wilson	MATL:	Wilson	TOLERANCE	Mason	DATE	16.04.2013
APPD:	Schumi			FINISH	Jamy		Sheet No.		1 from 5

EDCON-COMPONENTS

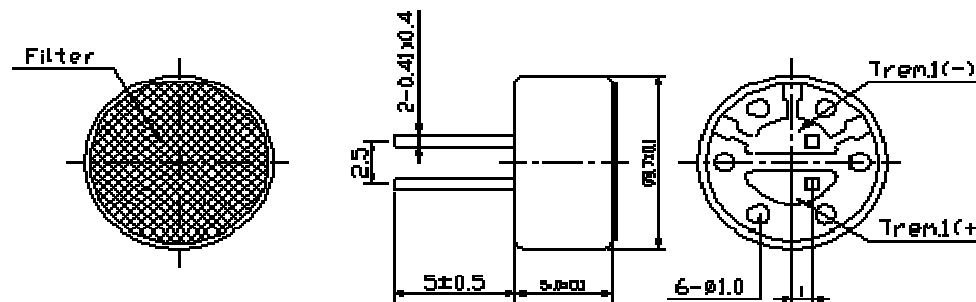


Specifications

Impedance:	Less than 680 Ω
Directivity:	Noise- Cancelling
Frequency:	20 ~ 16000Hz
Standard Operation Voltage:	1,5Volt
Current Consumption	Max. 0,5mA
Sensitivity reduction:	Sensitivity 3dB at 1,5V
S/N ratio	More than 60dB

Sensitivity: 1KHz, 0dB=1V/Pa
 . 54 ± 4dB (at L=50cm)

Dimension



Uni-directional Microfon	
Part No.:	Y24047
Customer:	

DRW:	Jason	CHKD	Wilson	MATL:	Wilson	TOLERANCE	Mason	DATE	16.04.2013
APPD:	Schumi			FINISH	Jamy		Sheet No.	2 from 5	

www.edcon-components.com

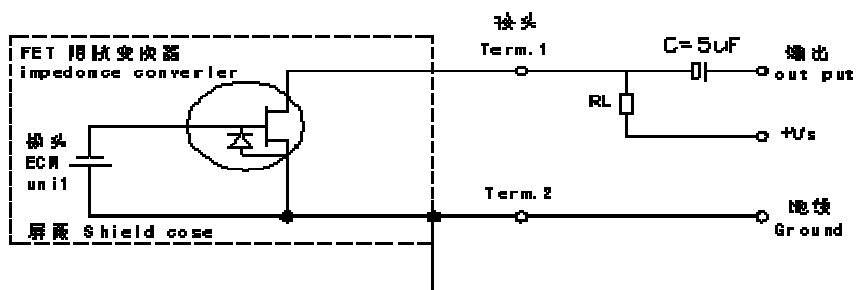
email: info@edcon-components.com

EDCON-COMPONENTS

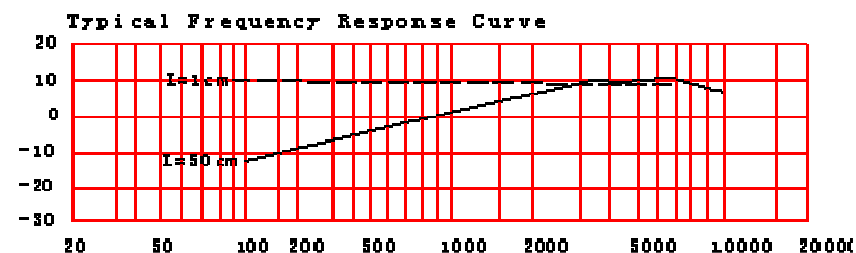


Schematic Diagramm

Frequency Responce



Frequency Response



Uni-directional Microfon	
Part No.:	Y24047
Customer:	

DRW:	Jason	CHKD	Wilson	MATL:	Wilson	TOLERANCE	Mason	DATE	16.04.2013
APPD:	Schumi			FINISH	Jamy		Sheet No.	3 from 5	

EDCON-COMPONENTS



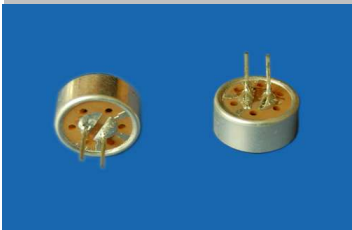
Ordering Informations

Serie	Selection table	Special function	Special function	ROHS	Packing Code					
Y24047	54	N	N	R	TU					

54= db	N= no special function	N= no special function	R= ROHS Conform	TU= Tube Packing
			N= NON ROHS Conform	TY= TRAY Packing
				IV= Individual Packing

Uni-directional Microfon	
Part No.:	Y24047
Customer:	

DRW:	Jason	CHKD	Wilson	MATL:	Wilson	TOLERANCE	Mason	DATE	16.04.2013
APPD:	Schumi			FINISH	Jamy		Sheet No.		4 from 5



Soldering Profile Curve

Classification Reflow Profile (JEDEC J-STD-020C)



Uni-directional Microfon	
Part No.:	Y24047
Customer:	

DRW:	Jason	CHKD	Wilson	MATL:	Wilson	TOLERANCE	Mason	DATE	16.04.2013
APPD:	Schumi			FINISH	Jamy		Sheet No.	5 from 5	