



# DATA SHEET

## Omnidirectional Microfon

### Serie: Y24032

<b>Omnidirectional Microfon</b>
-------------------------------------

Serie No.:	<b>Y24032</b>
------------	---------------

DRW:	Jason	CHKD	Wilson	MATL:	Wilson	TOLERANCE	Mason	DATE	16.04.2013
APPD:	Schumi			FINISH	Jamy			Sheet No.	1 from 5

Customer:
-----------

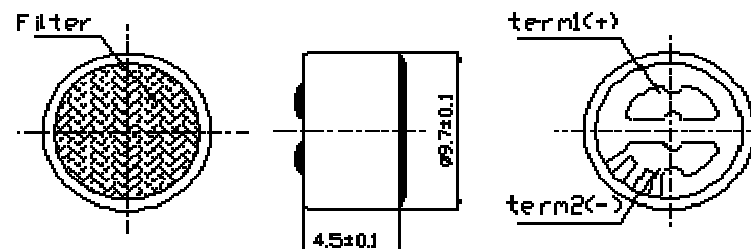
# EDCON-COMPONENTS



## Specifications

## Dimension

Impedance:	Less than 2,2K $\Omega$
Directivity:	Omnidirectional
Frequency:	20 ~ 16000Hz
Standard Operation Voltage:	4,5Volt
Current Consumption	Max. 0,5mA
Sensitivity reduction:	Sensitivity 3dB at 1,5V
S/N ratio	More than 60dB



Sensitivity: 1KHz, 0dB=1V/Pa

- .-46 ± 2dB
- .-44 ± 2dB
- .-42 ± 2dB
- .-40 ± 2dB
- .-38 ± 2dB
- .-36 ± 2dB
- .-34 ± 2dB
- .-32 ± 2dB
- .-30 ± 2dB

**Omnidirectional  
Microfon**

Part No.: **Y24032**

DRW:	Jason	CHKD	Wilson	MATL:	Wilson	TOLERANCE	Mason	DATE	16.04.2013
APPD:	Schumi			FINISH	Jamy		Sheet No.	2 from 5	Customer:

[www.edcon-components.com](http://www.edcon-components.com)

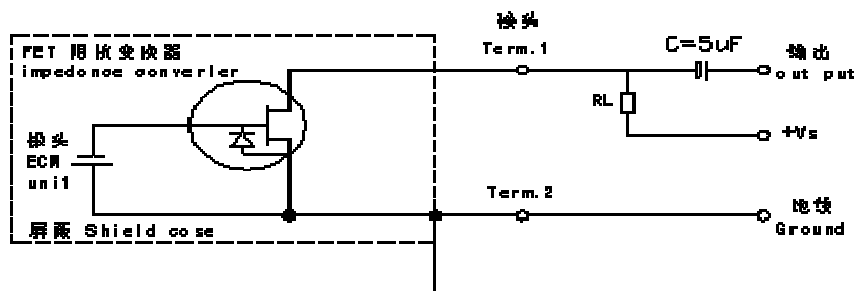
email: [info@edcon-components.com](mailto:info@edcon-components.com)

# EDCON-COMPONENTS

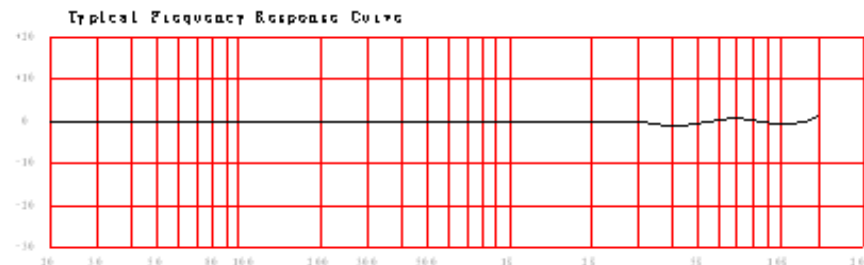


Schematic Diagramm

Frequency Response



Frequency Response



**Omnidirectional  
Microfon**

Part No.: **Y24032**

DRW:	Jason	CHKD	Wilson	MATL:	Wilson	TOLERANCE	Mason	DATE	16.04.2013
APPD:	Schumi			FINISH	Jamy		Sheet No.	3 from 5	Customer:

[www.edcon-components.com](http://www.edcon-components.com)

email: [info@edcon-components.com](mailto:info@edcon-components.com)

# EDCON-COMPONENTS



## Ordering Informations

Serie	Selection table	Special function	Special function	ROHS	Packing Code					
Y24032	46	N	N	R	TU					

46= db	N= no special function	N= no special function	R= ROHS Conform	TU= Tube Packing
44= db			N= NON ROHS Conform	TY= TRAY Packing
42= db				IV= Individual Packing
40= db				
38= db				
36= db				
34= db				
32= db				
30= db				

<b>Omnidirectional Microfon</b>	
Part No.:	<b>Y24032</b>
Customer:	

DRW:	Jason	CHKD	Wilson	MATL:	Wilson	TOLERANCE	Mason	DATE	16.04.2013
APPD:	Schumi			FINISH	Jamy		Sheet No.		4 from 5



Soldering Profile Curve

Classification Reflow Profile (JEDEC J-STD-020C)



<b>Omnidirectional Microfon</b>	
Part No.:	<b>Y24032</b>
Customer:	

DRW:	Jason	CHKD	Wilson	MATL:	Wilson	TOLERANCE	Mason	DATE	16.04.2013
APPD:	Schumi			FINISH	Jamy		Sheet No.	5 from 5	