



# DATA SHEET

## Omnidirectional Microfon

### Serie: Y24021

<b>Omnidirectional Microfon</b>
-------------------------------------

Serie No.:	<b>Y24021</b>
------------	---------------

DRW:	Jason	CHKD	Wilson	MATL:	Wilson	TOLERANCE	Mason	DATE	16.04.2013
APPD:	Schumi			FINISH	Jamy		Sheet No.		1 from 5

Customer:
-----------

# EDCON-COMPONENTS



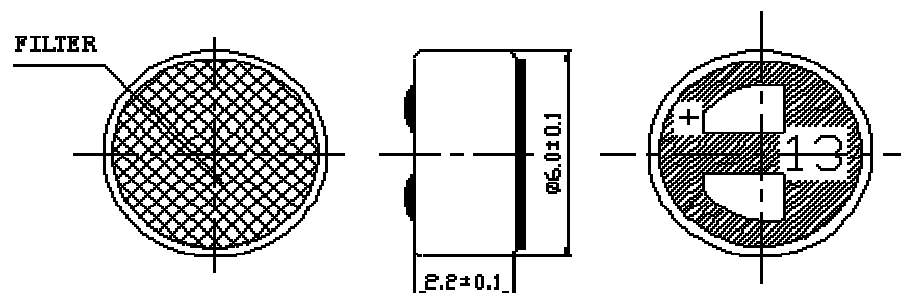
## Specifications

Impedance:	Less than 2,2K $\Omega$
Directivity:	Omnidirectional
Frequency:	20 ~ 16000Hz
Standard Operation Voltage:	2Volt
Current Consumption	Max. 0,5mA
Sensitivity reduction:	Sensitivity 3dB at 1,5V
S/N ratio	More than 60dB

Sensitivity: 1KHz, 0dB=1V/Pa

- .-46  $\pm$  2dB
- .-44  $\pm$  2dB
- .-42  $\pm$  2dB
- .-40  $\pm$  2dB
- .-38  $\pm$  2dB
- .-36  $\pm$  2dB

## Dimension



### Omnidirectional Microfon

Part No.: Y24021

DRW:	Jason	CHKD	Wilson	MATL:	Wilson	TOLERANCE	Mason	DATE	16.04.2013	Customer:
APPD:	Schumi			FINISH	Jamy		Sheet No.	2 from 5		

[www.edcon-components.com](http://www.edcon-components.com)

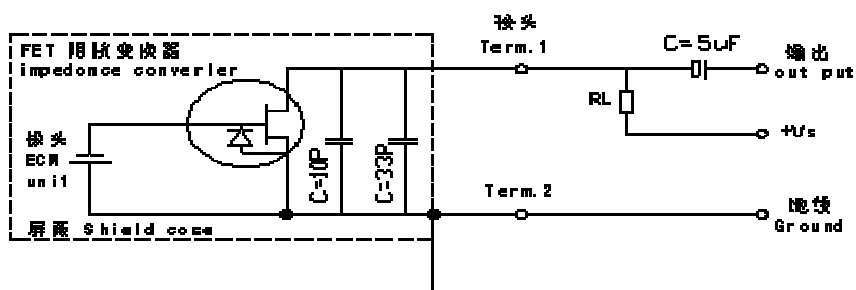
email: info@edcon-components.com

# EDCON-COMPONENTS

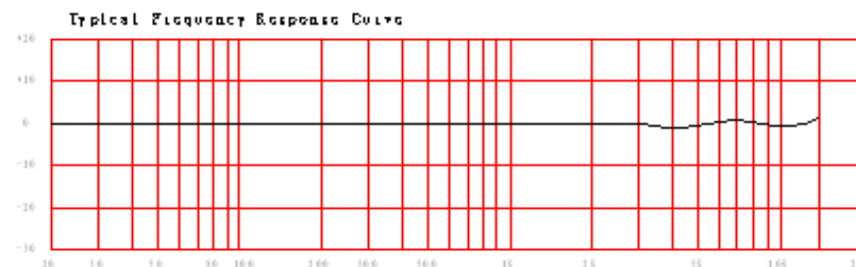


Schematic Diagramm

Frequency Responce



Frequency Responce



**Omnidirectional  
Microfon**

Part No.: **Y24021**

DRW:	Jason	CHKD	Wilson	MATL:	Wilson	TOLERANCE	Mason	DATE	16.04.2013
APPD:	Schumi			FINISH	Jamy		Sheet No.		3 from 5

Customer:  
email: info@edcon-components.com

# EDCON-COMPONENTS



## Ordering Informations

Serie	Selection table	Special function	Special function	ROHS	Packing Code					
Y24021	46	N	N	R	TU					

46= db	N= no special function	N= no special function	R= ROHS Conform	TU= Tube Packing
44= db			N= NON ROHS Conform	TY= TRAY Packing
42= db				IV= Individual Packing
40= db				
38= db				
36= db				

<b>Omnidirectional Microfon</b>	
Part No.:	<b>Y24021</b>
Customer:	

DRW:	Jason	CHKD	Wilson	MATL:	Wilson	TOLERANCE	Mason	DATE	16.04.2013
APPD:	Schumi			FINISH	Jamy		Sheet No.		4 from 5



Soldering Profile Curve

Classification Reflow Profile (JEDEC J-STD-020C)



<b>Omnidirectional Microfon</b>	
Part No.:	<b>Y24021</b>
Customer:	

DRW:	Jason	CHKD	Wilson	MATL:	Wilson	TOLERANCE	Mason	DATE	16.04.2013
APPD:	Schumi			FINISH	Jamy		Sheet No.	5 from 5	