

# DATA SHEET

## Omnidirectional Microfon

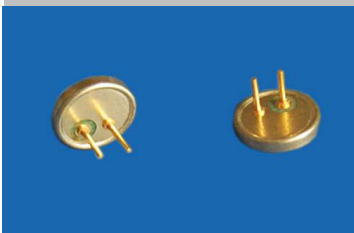
### Serie: Y24010

<b>Omnidirectional Microfon</b>
-------------------------------------

Serie No.: <b>Y24010</b>
--------------------------

DRW:	Jason	CHKD	Wilson	MATL:	Wilson	TOLERANCE	Mason	DATE	16.04.2013	Customer:
APPD:	Schumi			FINISH	Jamy		Sheet No.	1 from 5		

# EDCON-COMPONENTS



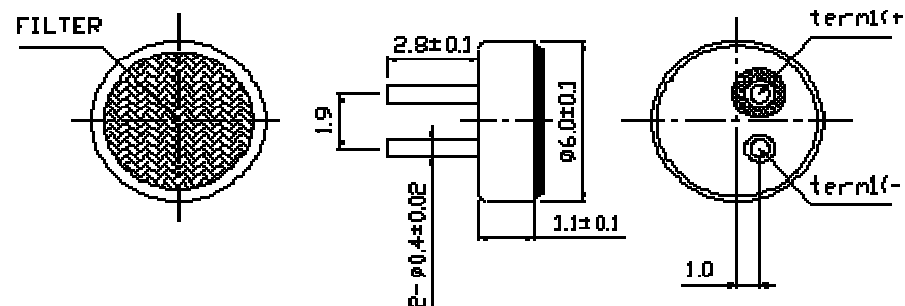
## Specifications

Impedance:	Less than 2,2K $\Omega$
Directivity:	Omnidirectional
Frequency:	20 ~ 16000Hz
Standard Operation Voltage:	2Volt
Current Consumption	Max. 0,5mA
Sensitivity reduction:	Sensitivity 3dB at 1,5V
S/N ratio	More than 60dB

Sensitivity: 1KHz, 0dB=1V/Pa

- .-46  $\pm$  2dB
- .-44  $\pm$  2dB
- .-42  $\pm$  2dB
- .-40  $\pm$  2dB
- .-38  $\pm$  2dB
- .-36  $\pm$  2dB

## Dimension



## Omnidirectional Microfon

Part No.: **Y24010**

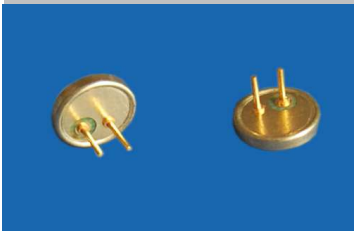
Customer:

DRW:	Jason	CHKD	Wilson	MATL:	Wilson	TOLERANCE	Mason	DATE	16.04.2013
APPD:	Schumi			FINISH	Jamy		Sheet No.	2 from 5	

[www.edcon-components.com](http://www.edcon-components.com)

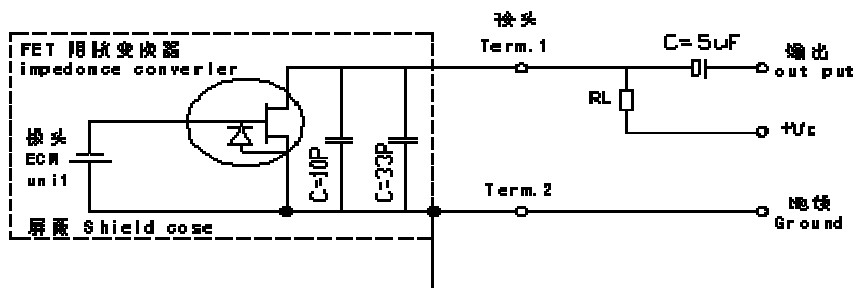
email: [info@edcon-components.com](mailto:info@edcon-components.com)

# EDCON-COMPONENTS

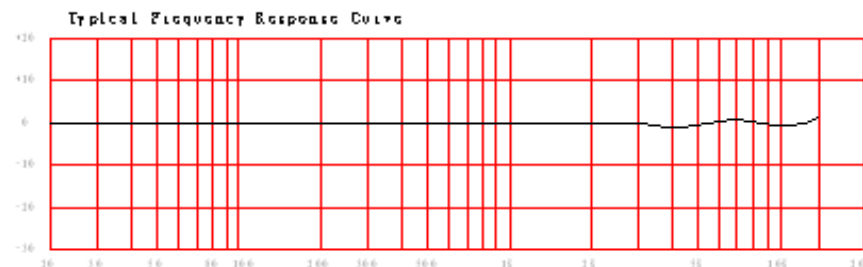


## Schematic Diagramm

## Frequency Response



## Frequency Response



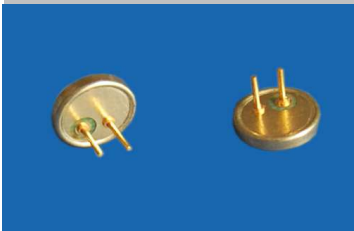
**Omnidirectional  
Microfon**

Part No.: **Y24010**

Customer:

DRW:	Jason	CHKD	Wilson	MATL:	Wilson	TOLERANCE	Mason	DATE	16.04.2013
APPD:	Schumi			FINISH	Jamy		Sheet No.	3 from 5	

# EDCON-COMPONENTS



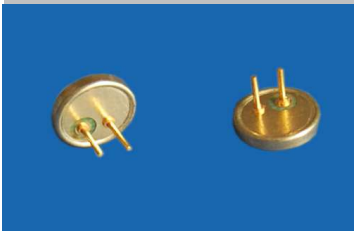
## Ordering Informations

Serie	Selection table	Special function	Special function	ROHS	Packing Code					
<b>Y24010</b>	<b>46</b>	<b>N</b>	<b>N</b>	<b>R</b>	<b>TU</b>					

<b>46=</b> db	<b>N=</b> no special function	<b>N=</b> no special function	<b>R=</b> ROHS Conform	<b>TU=</b> Tube Packing
<b>44=</b> db			<b>N=</b> NON ROHS Conform	<b>TY=</b> TRAY Packing
<b>42=</b> db				<b>IV=</b> Individual Packing
<b>40=</b> db				
<b>38=</b> db				
<b>36=</b> db				

<b>Omnidirectional Microfon</b>	
Part No.:	<b>Y24010</b>
Customer:	

DRW:	Jason	CHKD	Wilson	MATL:	Wilson	TOLERANCE	Mason	DATE	16.04.2013
APPD:	Schumi			FINISH	Jamy		Sheet No.		4 from 5



Soldering Profile Curve

Classification Reflow Profile (JEDEC J-STD-020C)



<b>Omnidirectional Microfon</b>	
Part No.:	<b>Y24010</b>
Customer:	

DRW:	Jason	CHKD	Wilson	MATL:	Wilson	TOLERANCE	Mason	DATE	16.04.2013
APPD:	Schumi			FINISH	Jamy		Sheet No.	5 from 5	