



DATA SHEET

Omnidirectional Microfon

Serie: Y24005

Omnidirectional Microfon

Serie No.:	Y24005
------------	---------------

DRW:	Jason	CHKD	Wilson	MATL:	Wilson	TOLERANCE	Mason	DATE	16.04.2013
APPD:	Schumi			FINISH	Jamy		Sheet No.		1 from 5

Customer:

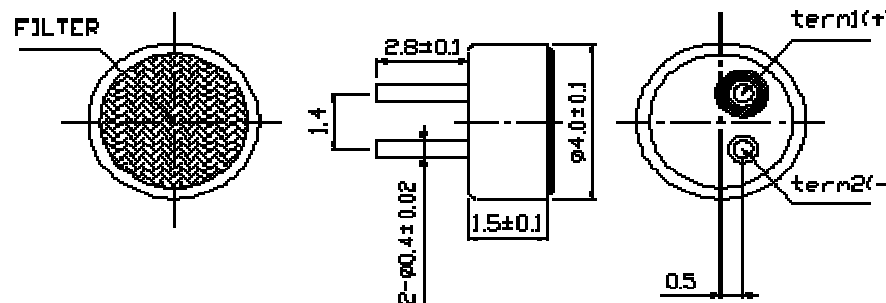
EDCON-COMPONENTS



Specifications

Dimension

Impedance:	Less than 2,2K Ω
Directivity:	Omnidirectional
Frequency:	20 ~ 16000Hz
Standard Operation Voltage:	2Volt
Current Consumption	Max. 0,5mA
Sensitivity reduction:	Sensitivity 3dB at 1,5V
S/N ratio	More than 60dB



Sensitivity: 1KHz, 0dB=1V/Pa

- .-46 ± 2dB
- .-44 ± 2dB
- .-42 ± 2dB
- .-40 ± 2dB
- .-38 ± 2dB

Omnidirectional Microfon

Part No.: **Y24005**

Customer:

DRW:	Jason	CHKD	Wilson	MATL:	Wilson	TOLERANCE	Mason	DATE	16.04.2013
APPD:	Schumi			FINISH	Jamy		Sheet No.	2 from 5	

www.edcon-components.com

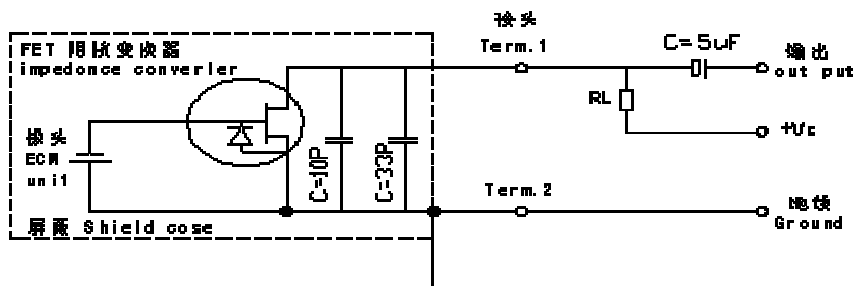
email: info@edcon-components.com

EDCON-COMPONENTS



Schematic Diagramm

Frequency Responce



Omnidirectional Microfon

Part No.: Y24005

DRW:	Jason	CHKD	Wilson	MATL:	Wilson	TOLERANCE	Mason	DATE	16.04.2013
APPD:	Schumi			FINISH	Jamy		Sheet No.	3 from 5	Customer:

www.edcon-components.com

email: info@edcon-components.com

EDCON-COMPONENTS



Ordering Informations

Serie	Selection table	Special function	Special function	ROHS	Packing Code					
Y24005	46	N	N	R	TU					

46= db	N= no special function	N= no special function	R= ROHS Conform	TU= Tube Packing
44= db			N= NON ROHS Conform	TY= TRAY Packing
42= db				IV= Individual Packing
40= db				
38= db				

Omnidirectional Microfon	
Part No.:	Y24005
Customer:	

DRW:	Jason	CHKD	Wilson	MATL:	Wilson	TOLERANCE	Mason	DATE	16.04.2013
APPD:	Schumi			FINISH	Jamy		Sheet No.		4 from 5



Soldering Profile Curve

Classification Reflow Profile (JEDEC J-STD-020C)



Omnidirectional Microfon	
Part No.:	Y24005
Customer:	

DRW:	Jason	CHKD	Wilson	MATL:	Wilson	TOLERANCE	Mason	DATE	16.04.2013
APPD:	Schumi			FINISH	Jamy		Sheet No.	5 from 5	