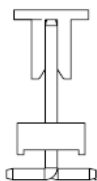


EDCON-COMPONENTS

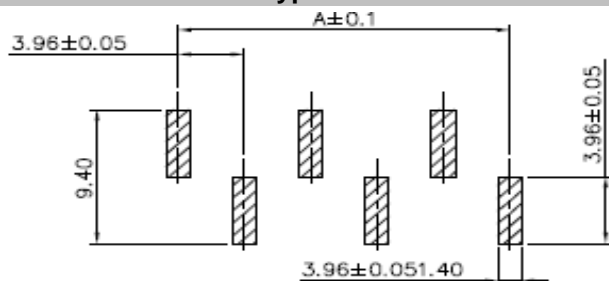


Specifications

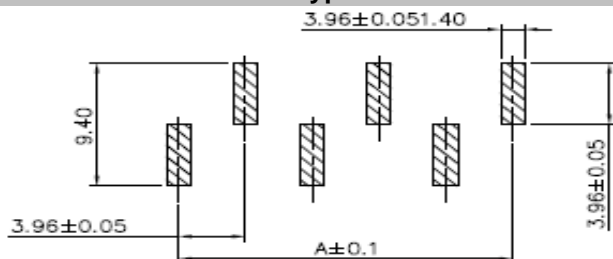
Voltage Rating:	250 VAC/DC
Current Rating:	5A AC/DC
Operating Temperature:	-25°C to + 85°C
Contact Resistance:	10 mΩ
Withstanding Voltage:	1500V AC/Minute
Insulation Resistance:	1000MΩ min.
Material Housing:	Nylon 6T UL94V-0
Pin-Material:	Brass
Color of Body:	Natural

P.C.B. Layout

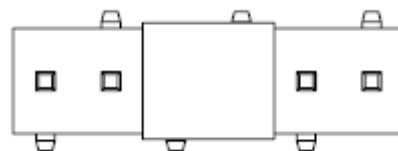
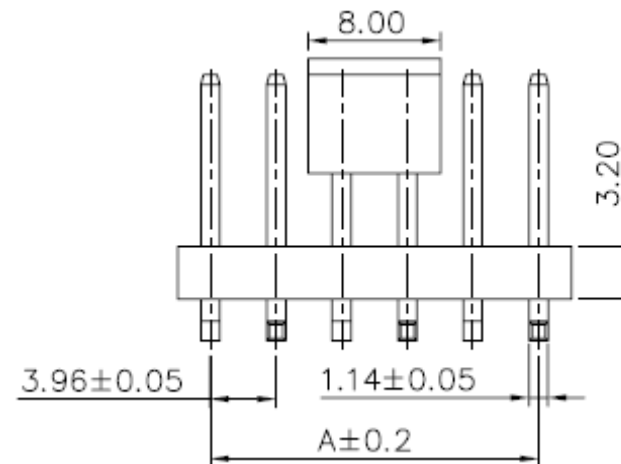
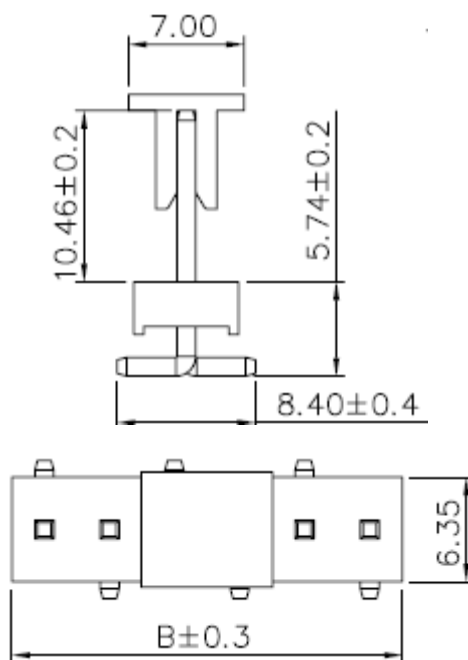
Type A



Type B



Drawing (dimensions all into mm)



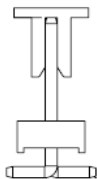
Wafer Serie T68Jxxxx Pitch
3,96mm

Part No.: **T68J037-**

Customer:

DRW:	Jason	CHKD	Wilson	MATL:	Wilson	TOLERANCE	Mason	DATE	14.04.2017
APPD:	Schumi			FINISH	Jamy		Sheet No.	1 from 4	

EDCON-COMPONENTS



Dimension Information about Housing

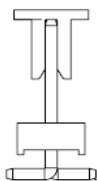
Pos.	Dimension (mm)			
	A	B		
2	3,96	7,92		
3	7,92	11,88		
4	11,88	15,84		
5	15,84	19,80		
6	19,80	23,76		
7	23,76	27,72		
8	27,72	31,68		
9	31,68	35,64		
10	35,64	39,60		
11	39,60	43,56		
12	43,56	47,52		
13	47,52	51,48		
14	51,48	55,44		
15	55,44	59,40		
16	59,40	63,36		
17	63,36	67,32		
18	67,32	71,28		
19	71,28	75,24		
20	75,24	79,20		

Pos.	Dimension (mm)			
	A	B		

Wafer Serie T68Jxxxx Pitch 3,96mm	
Part No.:	T68J037-
Customer:	

DRW:	Jason	CHKD	Wilson	MATL:	Wilson	TOLERANCE	Mason	DATE	14.04.2017
APPD:	Schumi			FINISH	Jamy		Sheet No.		2 from 4

EDCON-COMPONENTS



Ordering Informations

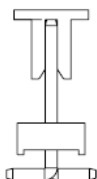
Serie	Number of Pos.	Contact Plating	Color of Body	Layout Type	Special function	Packing				
-------	----------------	-----------------	---------------	-------------	------------------	---------	--	--	--	--

T68J037-	02	TN	NA	A	N	BU				
-----------------	-----------	-----------	-----------	----------	----------	-----------	--	--	--	--

02 = 2Pos.	TN= tinned	NA= Natural	A= Layout Type A	N= No special function	BU= Bulk-ware				
xx = xxPos like table	GF= Gold flash		B= Layout Type B		TU= Tube-Packing				
					TC= Tube with Cap				
					TR= T/Reel with Cap				

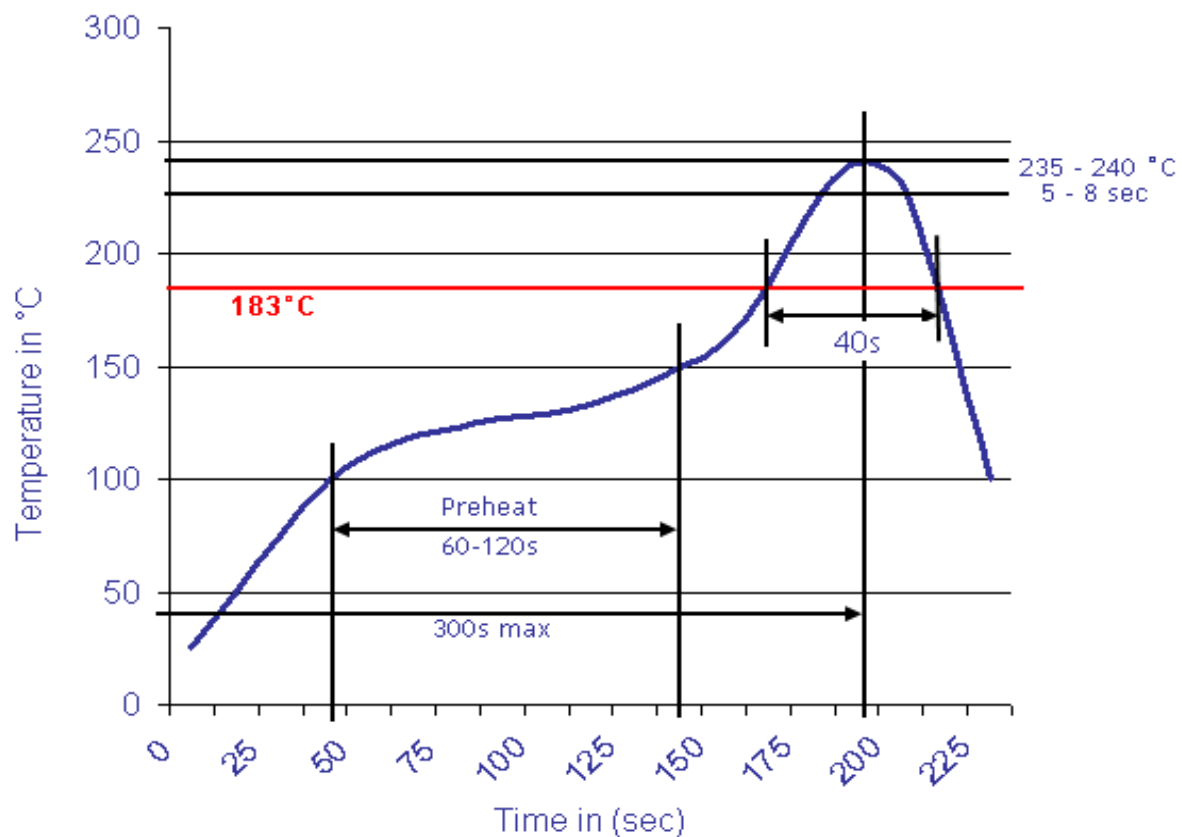
Wafer Serie T68Jxxxx Pitch 3,96mm
Part No.: T68J037-
Customer:

DRW:	Jason	CHKD	Wilson	MATL:	Wilson	TOLERANCE	Mason	DATE	14.04.2017
APPD:	Schumi			FINISH	Jamy		Sheet No.		3 from 4



Soldering Profile Curve

Classification Reflow Profile (JEDEC J-STD-020C)



Wafer Serie T68Jxxxx Pitch 3,96mm
Part No.: T68J037-
Customer:

DRW:	Jason	CHKD	Wilson	MATL:	Wilson	TOLERANCE	Mason	DATE	14.04.2017
APPD:	Schumi			FINISH	Jamy		Sheet No.	4 from 4	