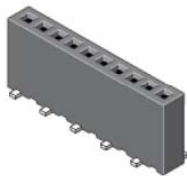


EDCON-COMPONENTS



Contact



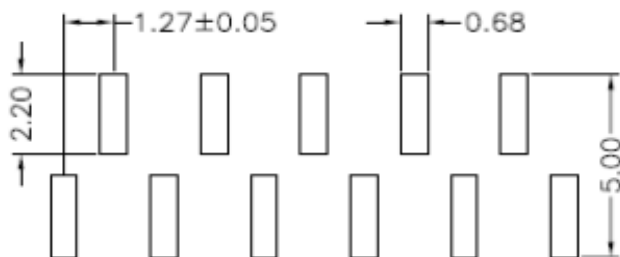
Specifications

Current Rating:	1 Ampere
Insulator Resistance:	1000 Megaohm min.
Contact Resistance	20m Ohm max.
Dielectric Withstanding:	AC 500V
Operating Temperature:	.-40°C to +105°C
Contact Material:	Phosphor Bronze
Insulator Material:	Polyester, UL 94V-0
Standard:	PA6T
Contact Plating:	Tin, Gold or Selective Plated
Standard:	Gold Flash Overall

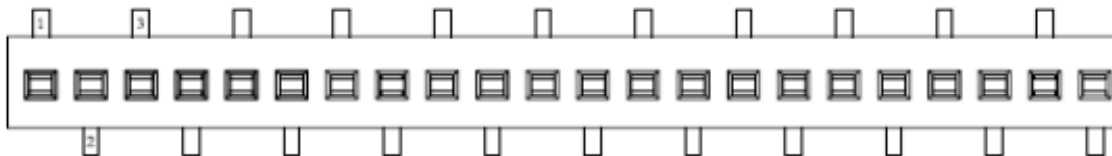
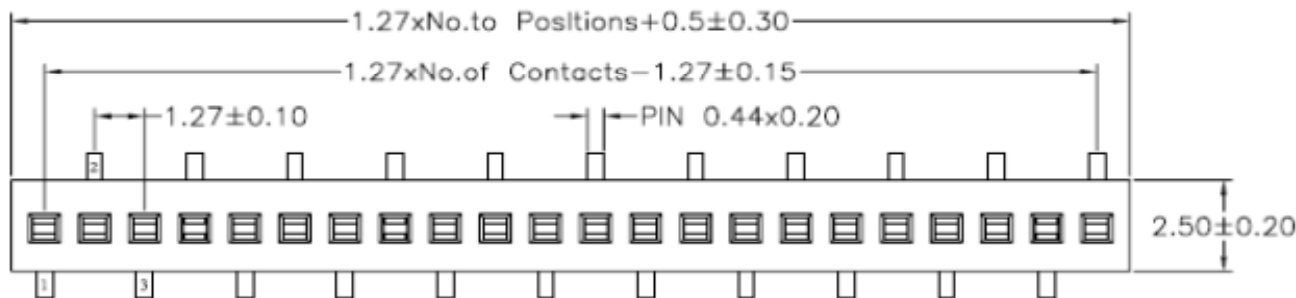
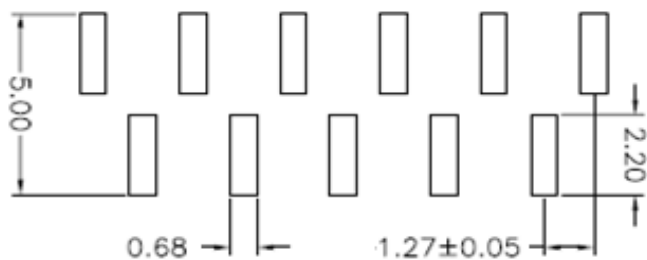
Drawing (mm)

Top Entry Contact Area (1,40~2,10mm) Standard 1,80mm

P.C.B Layout Type 1



P.C.B Layout Type 2



**Female Header Pitch
1,27mm**

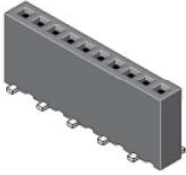
X=	X.X=	X.XX=	X.XXX=	Angle
±0,35	±0,25	±0,20	±0,15	±5°

Part No.: **T27C1057-**

Customer:

DRW:	Jason	CHKD	Wilson	MATL:	Wilson	TOLERANCE	Mason	DATE	17.12.2020
APPD:	Schumi			FINISH	Jamy		Sheet No.		1 from 4

EDCON-COMPONENTS



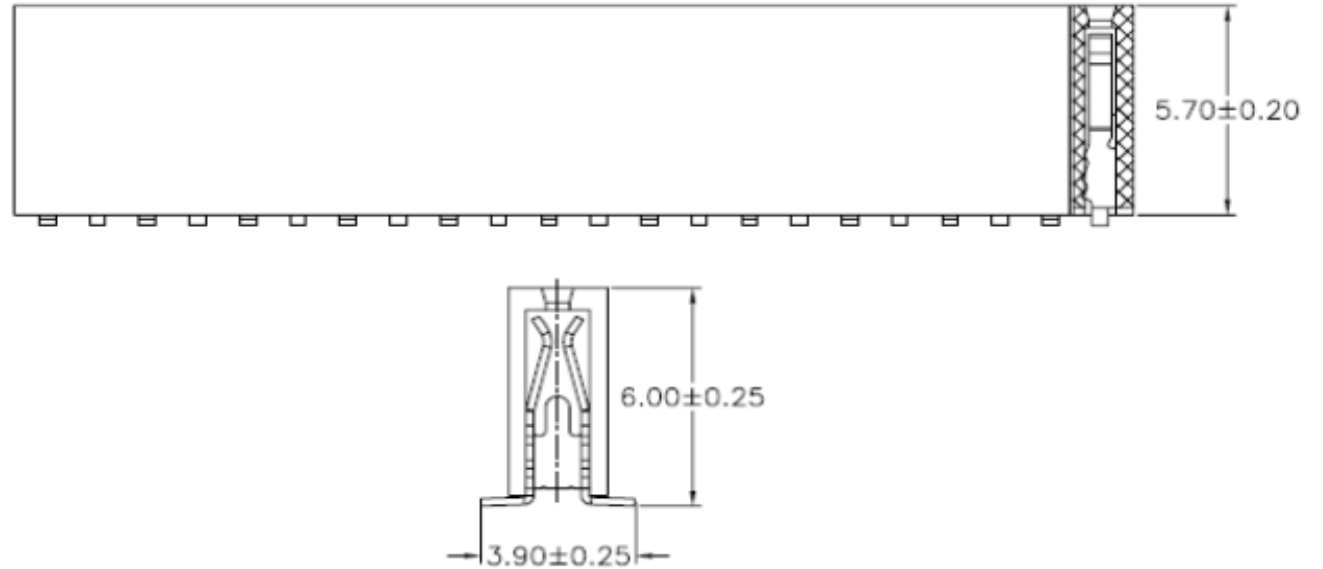
Contact



Pin Code length table free configuration Table 1

Drawing (mm)

Order Code	Dimension (mm)			
	D			
A01	3,90			
A02				
A03				
A04				
A05				
A06				
A07				
A08				
A09				
A10				
A11				
A12				
A13				
A14				
A15				
A16				
A17				
A18				
A19				
A20				
A21				
A22				
A23				
A24				
A25				
A26				
A27				



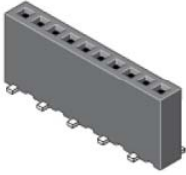
Female Header Pitch 1,27mm	
Part No.:	T27C1057-
Customer:	

DRW:	Jason	CHKD	Wilson	MATL:	Wilson	TOLERANCE	Mason	DATE	17.12.2020
APPD:	Schumi			FINISH	Jamy		Sheet No.		2 from 4

www.edcon-components.com

email: info@edcon-components.com

EDCON-COMPONENTS



Contact



Ordering Informations

Serie	No. of Pos.	Construction	Contact Plating	Material	Layout Type	Pin Length Code	ROHS	Packing		
T27C1057-	XX	SS	G0	P6	1	A01	R	BU		

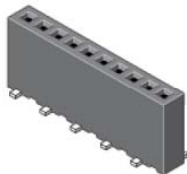
02 ~ 40Pos.	SS= Straight SMD	G0= Gold Flash (Standard)	P6= 6T	1= PCB Layout Type 1	Look Table No. 1	N= NO ROHS conform	BU= Bulk (Standard)						
		T0= Tin plated		LC= LCP			2= PCB Layout Type 2	R= ROHS conform	TU= Tube w/o Cap				
		T0= Tin plated	P4= PA46	GA= 3µ Gold Plating	GB= 5µ Gold Plating	GC= 10µ Gold Plating	GD= 15µ Gold Plating	GE= 20µ Gold Plating	GF= 30µ Gold Plating	S0= Selectiv Plating Gold Flash / Tin	TC= Tube w. pic and Place Cap	TY= Tray packing w/o Cap	TR= Tape/Reel w. pic and Place Cap

Female Header Pitch 1,27mm	
Part No.:	T27C1057-
Customer:	

DRW:	Jason	CHKD	Wilson	MATL:	Wilson	TOLERANCE	Mason	DATE	17.12.2020
APPD:	Schumi			FINISH	Jamy		Sheet No.		3 from 4

www.edcon-components.com

email: info@edcon-components.com

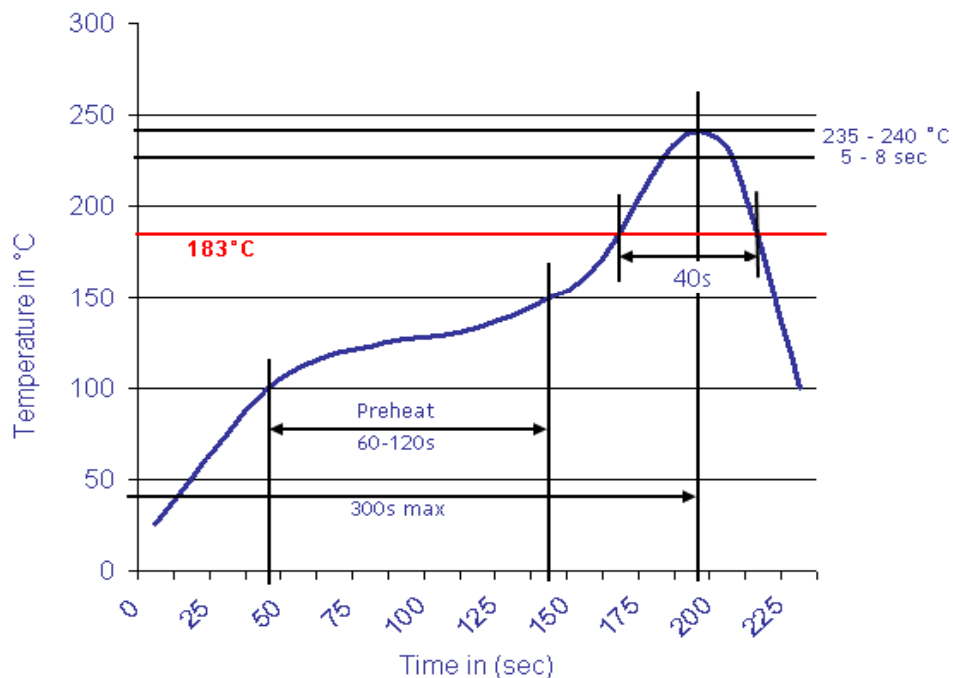


Contact



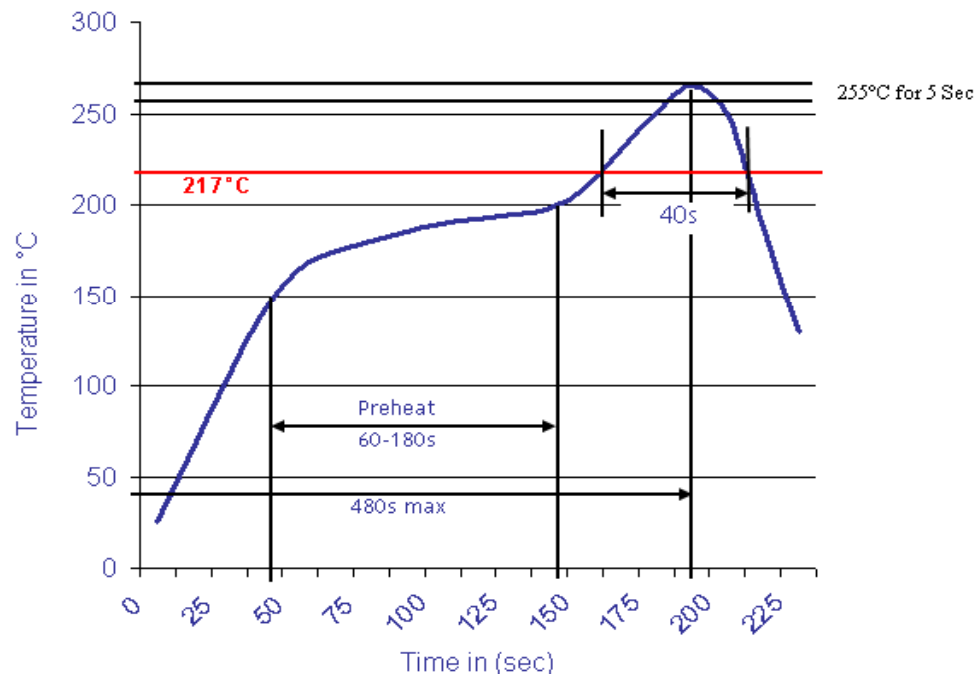
Soldering Profile for Lead Free Soldering (P.B.T.)

Classification Reflow Profile (JEDEC J-STD-020C)



Soldering Profile for Lead Free Soldering (Nylon 6T)

Classification Reflow Profile (JEDEC J-STD-020C)



**Female Header Pitch
1,27mm**

Part No.: **T27C1057-**

Customer:

DRW:	Jason	CHKD	Wilson	MATL:	Wilson	TOLERANCE	Mason	DATE	17.12.2020
APPD:	Schumi			FINISH	Jamy		Sheet No.		4 from 4