

EDCON-COMPONENTS

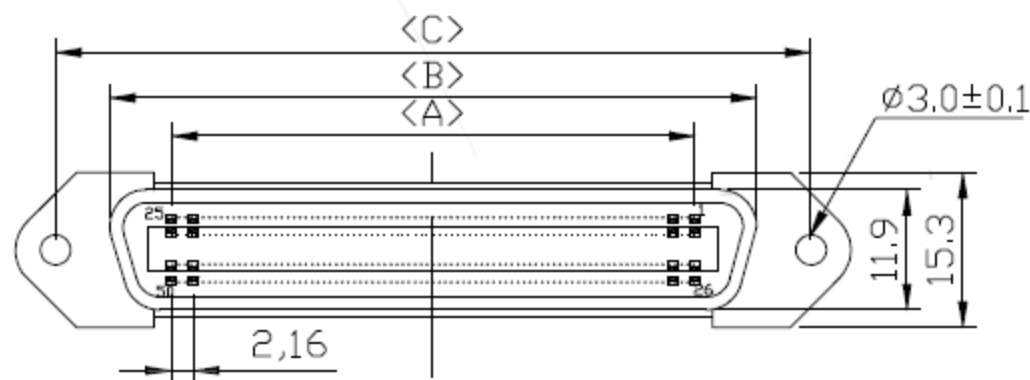


Specifications

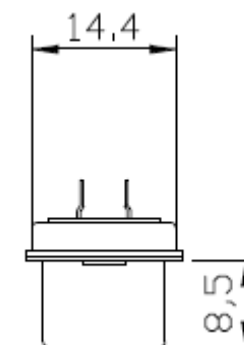
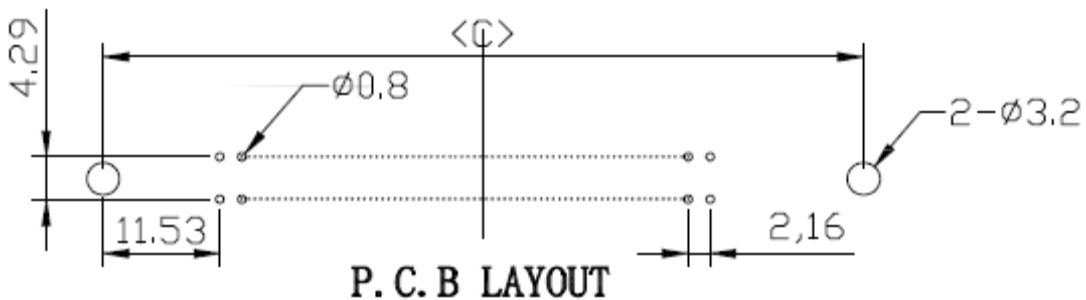
Voltage Rating: 250VAC
 Current Rating: 1A
 Operating Temperature: -55°C ~ +105°C
 Contact Resistance: 20mΩ min.
 Withstanding Voltage: 1000V AC
 Insulation Resistance: 1000MΩ min

Insulator Material: PBT, UL 94V-0
 Contact Material: Brass
 Contact Plating: Ni, /Au/Sn
 Shell: look order Code

Drawing (dimensions all into mm)



PCB Layout (mm)



Tolerances unless otherwise specified (mm)

x	x.X	x.XX	x.xxx	Angle
±	±	±	±	±3°

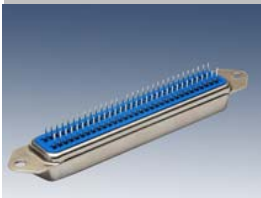
Centronic Connector for PCB assembly

Part No.: **T17007**

DRW:	Jason	CHKD	Wilson	MATL:	Wilson	TOLERANCE	Mason	DATE	03.04.2019
APPD:	Schumi			FINISH	Jamy		Sheet No.		1 from 3

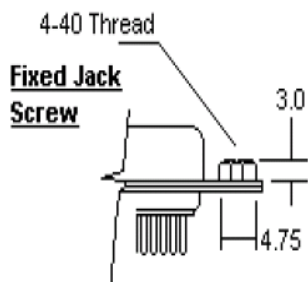
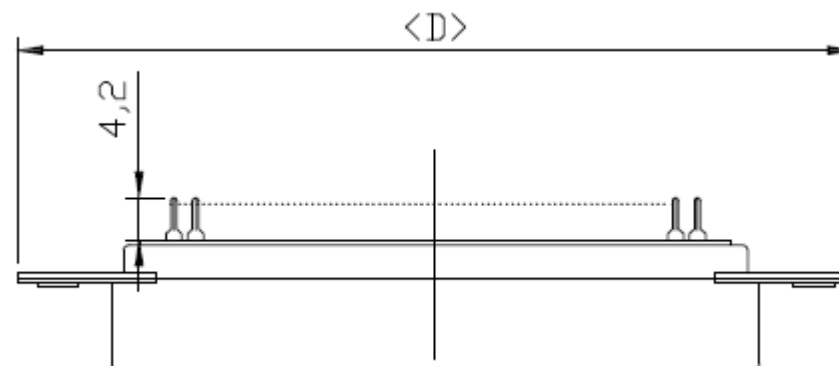
Customer:

EDCON-COMPONENTS

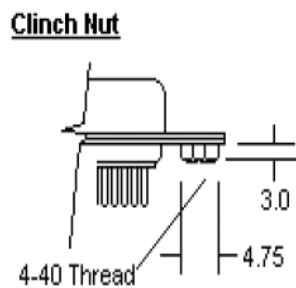


Dimension Information about Housing

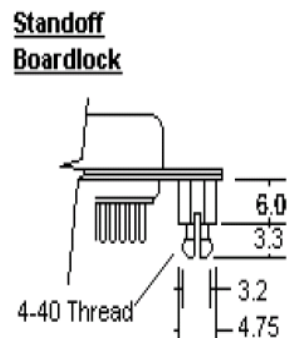
Pos.	Dimension (mm)					
	A	B	C	D	E	F
14	12,96	25,20	36,00	44,00		
24	23,76	36,00	46,80	54,80		
36	36,72	48,90	59,70	67,70		
50	51,84	64,00	74,90	82,80		
64	66,96	79,30	89,97	97,92		



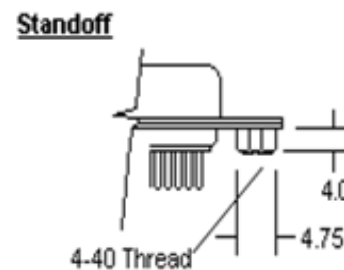
Mounting Option A



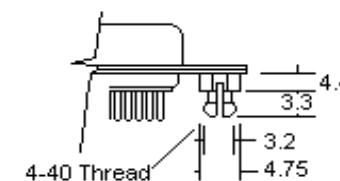
Mounting Option B



Mounting Option C



Mounting Option D



Mounting Option E

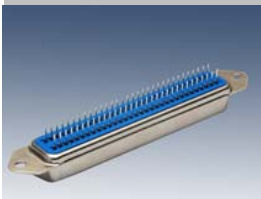
Centronic Connector for PCB assembly

Part No.: **T17007**

DRW:	Jason	CHKD	Wilson	MATL:	Wilson	TOLERANCE	Mason	DATE	03.04.2019
APPD:	Schumi			FINISH	Jamy		Sheet No.		2 from 3

Customer:

EDCON-COMPONENTS



Ordering Informations (Example)

Serie	Number of Pos.	Version	Mounting Option	Contact Plating	Shell	Contact Length (mm)	Insulator Colour	ROHS Conform	Packing	
-------	----------------	---------	-----------------	-----------------	-------	---------------------	------------------	--------------	---------	--

T17007	xx	M	H	SF	NI	H	B	Y	TY	
---------------	-----------	----------	----------	-----------	-----------	----------	----------	----------	-----------	--

xx = Pos. look table	M= Male Connector	H= with 3mm Hole	TN= TIN plated	NI= Nickel plated all	A= 2,6mm	B= Blue	Y= ROHS conform	TY= Tray Packing	
	F= Female Connector	A= Front Fixed Nut	TN= Tin plated all	NI= Nickel Front Tin Back	B= 2,7mm	K= Black	N= NON ROHS conform	IV= Individual Packing	
		B= Rear Fixed Nut 3,0mm	SF= Selektiv Gold flash	NF= Nickel Front Tin Back	C= 2,8mm				
		C= Boardlock H=6,0mm	SA= Selektiv Gold 5µ	GF= Gold Plated overall	D= 3,0mm				
		D= Rear Fixed Nut 4,0mm	SB= Selektiv Gold 10µ	GA= Gold Plated Front, TIN Back	E= 3,2mm				
		E= Boardlock H=4,4mm	SC= Selektiv Gold 15µ	ZC= Zinc plated all	F= 4,7mm				
			SD= Selektiv Gold 30µ		G= 5,4mm				
					H= 4,2mm				
					I= 3,1mm				
					K= 1,6mm				
					L= 2,4mm				
					N= 1,4mm				

Centronic Connector for PCB assembly	
Part No.:	T17007
Customer:	

DRW:	Jason	CHKD	Wilson	MATL:	Wilson	TOLERANCE	Mason	DATE	03.04.2019
APPD:	Schumi			FINISH	Jamy		Sheet No.		3 from 3