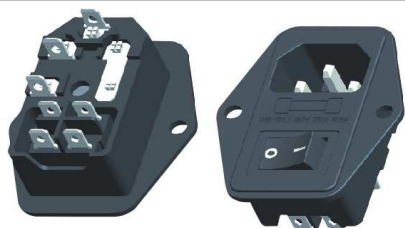




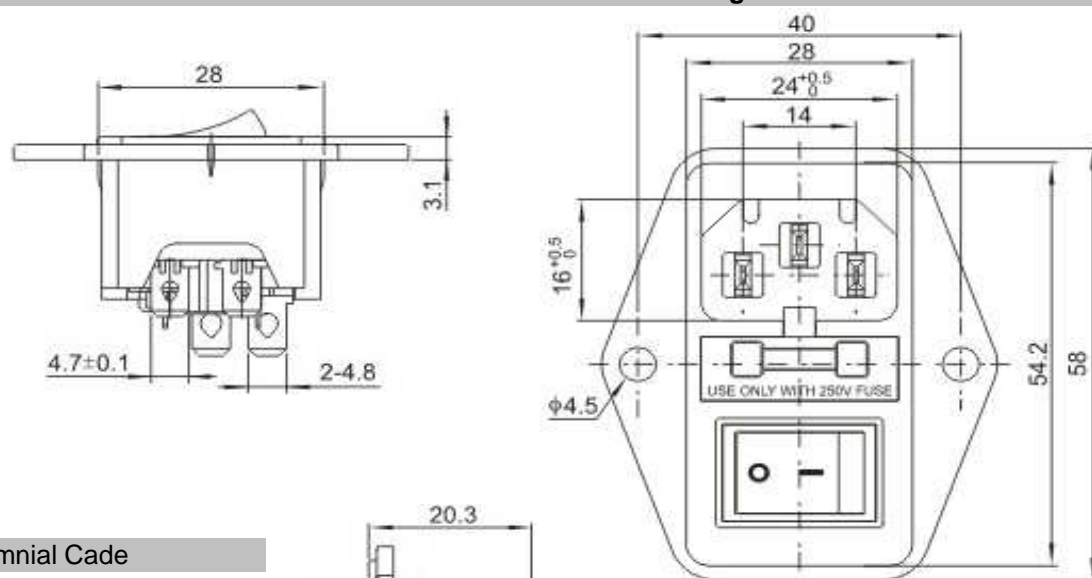
# EDCON-COMPONENTS



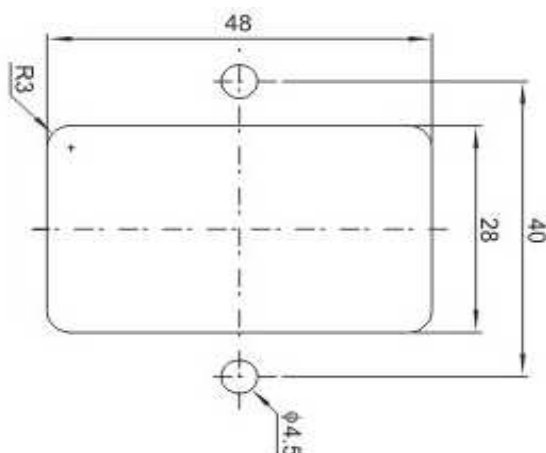
## Technical Description

Voltage Rating: 15A/250VAC T105  
 Approval:   
 Voltage Rating: 10A / 250VAC  
 Approval:   
 Insulation Resistance: 1000MΩ (min) 500VDC  
 Dielectric withstand Voltage: 2500VAC 5s between Terminals 50~60Hz  
 Dielectric withstand Voltage: 3750VAC between Terminals to Base 50~60Hz  
 Insert & Extract Force: 1,36Kg - 6,8Kgf  
 Leakage Current: 1mA  
  
 Terminal Strength: ≥ 80N  
 Operating Life: ≥ 5000 cycles

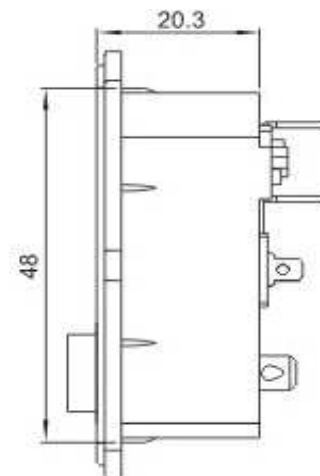
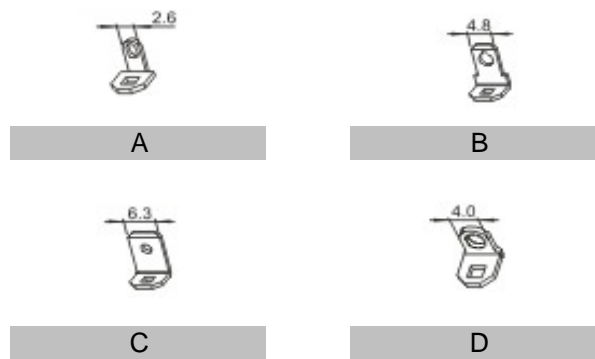
## Drawing



## Panel Cutout



## Connecting Terminal Code



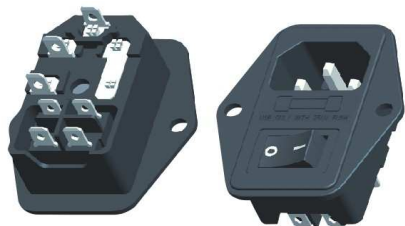
## European AC-Power Connector

Part No.: **T11057**

Customer:

DRW:	Jason	CHKD	Wilson	MATL:	Wilson	TOLERANCE	Mason	DATE	09.08.2016
APPD:	Schumi			FINISH	Jamy		Sheet No.		1 from 2

# EDCON-COMPONENTS



## Ordering Informations

Serie	Body Colour	Panel Thickness	PCB Layout Type	Connecting Terminal	Special function	Special function	ROHS	Packing		
-------	-------------	-----------------	-----------------	---------------------	------------------	------------------	------	---------	--	--

<b>T11057</b>	<b>BK</b>	<b>N</b>	<b>A</b>	<b>N</b>	<b>N</b>	<b>N</b>	<b>R</b>	<b>BU</b>		
---------------	-----------	----------	----------	----------	----------	----------	----------	-----------	--	--

<b>BK= Black</b>	<b>N= No function</b>	<b>N= No function</b>	<b>A= Solder Lug Terminal</b>	<b>N= No function</b>	<b>N= No function</b>	<b>R= ROHS Conform</b>	<b>BU= Bulk-Ware</b>
<b>WH= White</b>			<b>B= Flat- Term 4,8mm</b>				
<b>RD= Red</b>			<b>C= Flat- Term 6,2mm</b>				
<b>YE= Yellow</b>			<b>D= Flat- Term 4,0mm</b>				
<b>GN= Green</b>							
<b>BL= Blue</b>							

<b>European AC-Power Connector</b>	
Part No.:	<b>T11057</b>
Customer:	

DRW:	Jason	CHKD	Wilson	MATL:	Wilson	TOLERANCE	Mason	DATE	09.08.2016
APPD:	Schumi			FINISH	Jamy		Sheet No.	2 from 2	