



EDCON-COMPONENTS

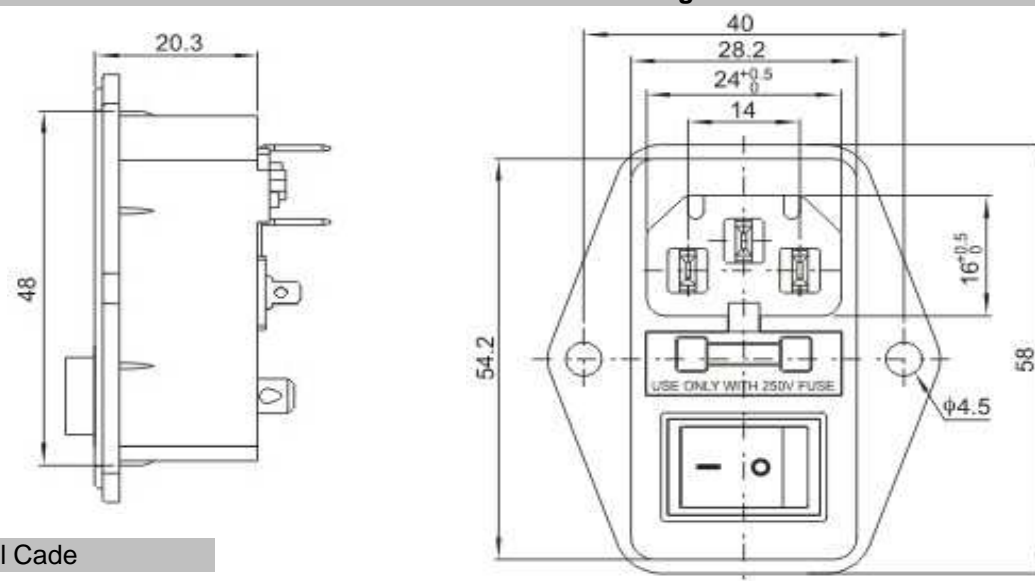


Technical Description

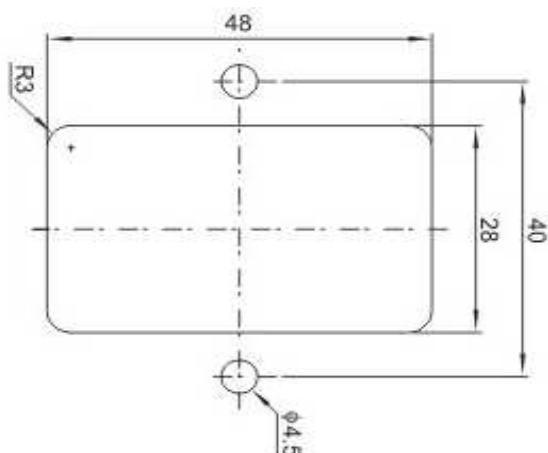
Voltage Rating: 15A/250VAC T105
 Approval: 
 Voltage Rating: 10A / 250VAC
 Approval: 
 Insulation Resistance: 1000MΩ (min) 500VDC
 Dielectric withstand Voltage: 2500VAC 5s between Terminals 50~60Hz
 Dielectric withstand Voltage: 3750VAC between Terminals to Base 50~60Hz
 Insert & Extract Force: 1,36Kg - 6,8Kg
 Leakage Current: 1mA

 Terminal Strength: ≥ 80N
 Operating Life: ≥ 5000 cycles

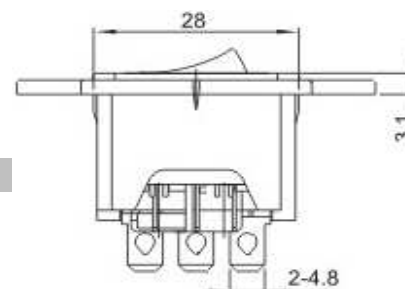
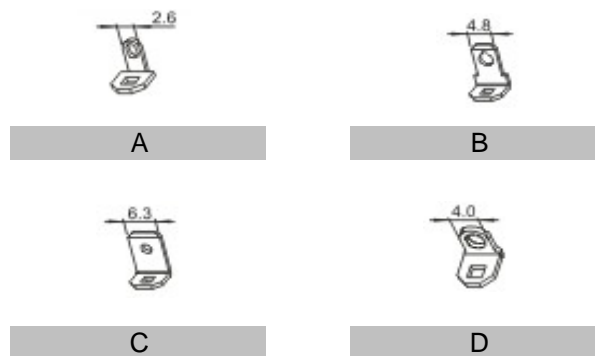
Drawing



Panel Cutout



Connecting Terminal Code



European AC-Power Connector

Part No.: **T11056**

Customer:

DRW:	Jason	CHKD	Wilson	MATL:	Wilson	TOLERANCE	Mason	DATE	09.08.2016
APPD:	Schumi			FINISH	Jamy		Sheet No.		1 from 2

EDCON-COMPONENTS



Ordering Informations

Serie	Body Colour	Panel Thickness	PCB Layout Type	Connecting Terminal	Special function	Special function	ROHS	Packing		
-------	-------------	-----------------	-----------------	---------------------	------------------	------------------	------	---------	--	--

T11056	BK	N	A	N	N	N	R	BU		
---------------	-----------	----------	----------	----------	----------	----------	----------	-----------	--	--

BK= Black	N= No function	N= No function	A= Solder Lug Terminal	N= No function	N= No function	R= ROHS Conform	BU= Bulk-Ware
WH= White			B= Flat- Term 4,8mm				
RD= Red			C= Flat- Term 6,2mm				IV= Individual Package
YE= Yellow			D= Flat- Term 4,0mm				
GN= Green							
BL= Blue							

European AC-Power Connector	
Part No.:	T11056
Customer:	

DRW:	Jason	CHKD	Wilson	MATL:	Wilson	TOLERANCE	Mason	DATE	09.08.2016
APPD:	Schumi			FINISH	Jamy		Sheet No.		2 from 2