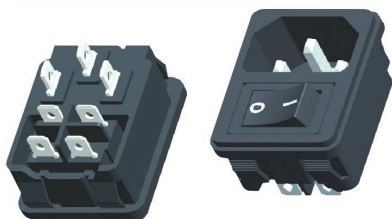


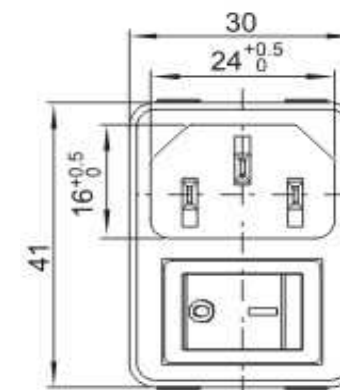
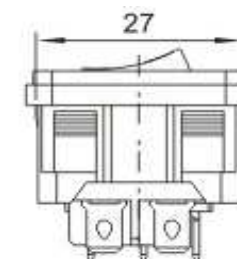
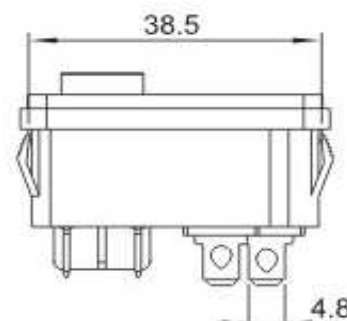
# EDCON-COMPONENTS



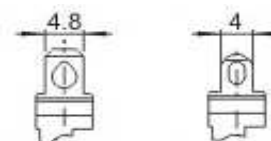
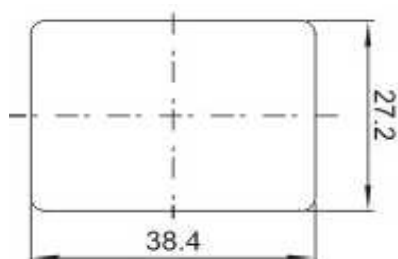
## Technical Discription

Voltage Rating:	15A/250VAC T105
Approval	
Voltage Rating:	10A / 250VAC
Approval	
Insulation Resistance:	1000MΩ (min) 500VDC
Dielectric withstand Voltage:	2500VAC 5s between Terminals 50~60Hz
Dielectric withstand Voltage:	3750VAC between Terminals to Base 50~60Hz
Insert & Extract Force:	1,36Kg - 6,8Kgf
Leackage Current:	1mA
Termnial Strength:	≥ 80N
Operating Life:	≥ 5000 cycles

## Drawing



## Panel Cutout



Type A

Type B

## European AC-Power Connector

Part No.: **T11037**

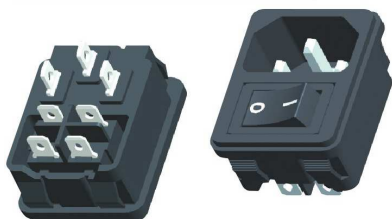
Customer:

DRW:	Jason	CHKD	Wilson	MATL:	Wilson	TOLERANCE	Mason	DATE	04.08.2016
APPD:	Schumi			FINISH	Jamy		Sheet No.	1 from 2	

[www.edcon-components.com](http://www.edcon-components.com)

email: [info@edcon-components.com](mailto:info@edcon-components.com)

# EDCON-COMPONENTS



## Ordering Informations

Serie	Body Colour	Panel Thickness A	Dimension D	Connecting Terminal	Spezial Function	Spezial Function	ROHS	Packing		
-------	-------------	-------------------	-------------	---------------------	------------------	------------------	------	---------	--	--

<b>T11037</b>	-	<b>BK</b>	<b>B</b>	<b>N</b>	<b>A</b>	<b>N</b>	<b>N</b>	<b>R</b>	<b>BU</b>		
---------------	---	-----------	----------	----------	----------	----------	----------	----------	-----------	--	--

<b>BK</b> = Black		<b>N</b> = No function	<b>A</b> = 4,8mm Terminal	<b>N</b> = No function	<b>N</b> = No function	<b>R</b> = ROHS Conform	<b>BU</b> = Bulk-Ware
<b>WH</b> = White			<b>B</b> = Solder Lug Terminal				
<b>RD</b> = Red	<b>B</b> = 1,0mm						<b>IV</b> = Individual Package
<b>YE</b> = Yellow	<b>C</b> = 1,5mm						
<b>GN</b> = Green	<b>D</b> = 2,0mm						
<b>BL</b> = Blue	<b>E</b> = 3,0mm						

**European AC-Power Connector**

Part No.: **T11037**

DRW:	Jason	CHKD	Wilson	MATL:	Wilson	TOLERANCE	Mason	DATE	04.08.2016
APPD:	Schumi			FINISH	Jamy		Sheet No.	2 from 2	

Customer: