



DATA SHEET

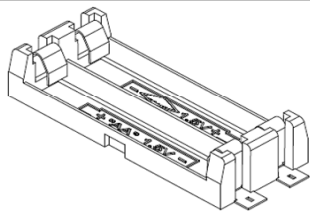
SMD Battery Holder Type AAA Two Cell

Serie: B45004

SMD Battery Holder Type AAA Two Cell
Serie No.: B45004
Customer:

DRW:	Jason	CHKD	Wilson	MATL:	Wilson	TOLERANCE	Mason	DATE	29.08.2017
APPD:	Schumi			FINISH	Jamy		Sheet No.		1 from 5

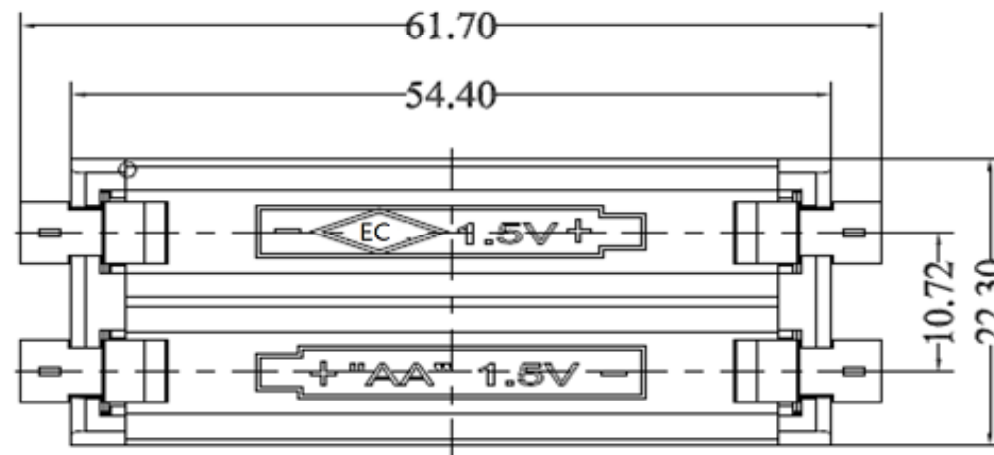
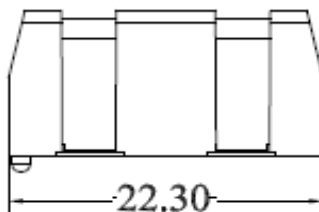
EDCON-COMPONENTS



Technical Description

Type: Two Cell
 Base Material: Heat Resistance Nylon Black Colour
 Flammability Rating: UL94V-0
 Contacts Material: 0,35 Phosphor Bronze
 Contact Plating: Gold Flash
 Output: 1,5VDC
 Polarisation Peg: Yes
 Flammability Rating: UL94V-0
 Weight: 6,0gr.
 Battery Type: AA Cell

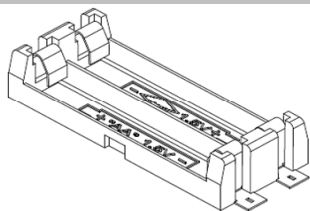
Technical Drawing



SMD Battery Holder Type AAA Two Cell	
Part No.:	B45004
Customer:	

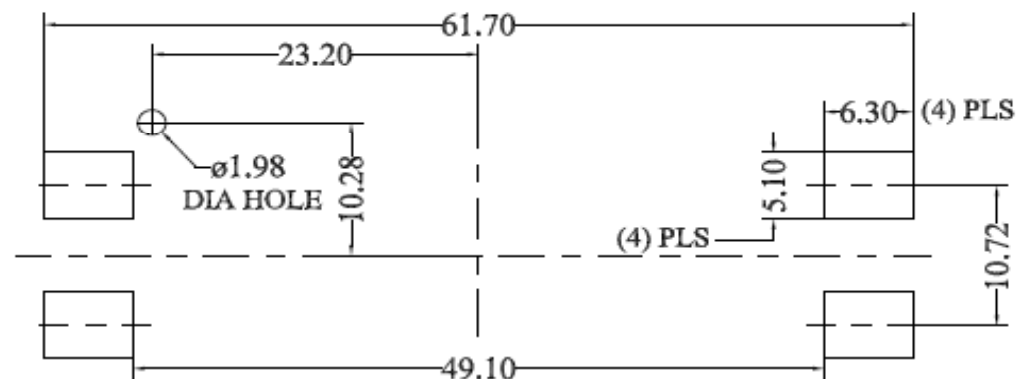
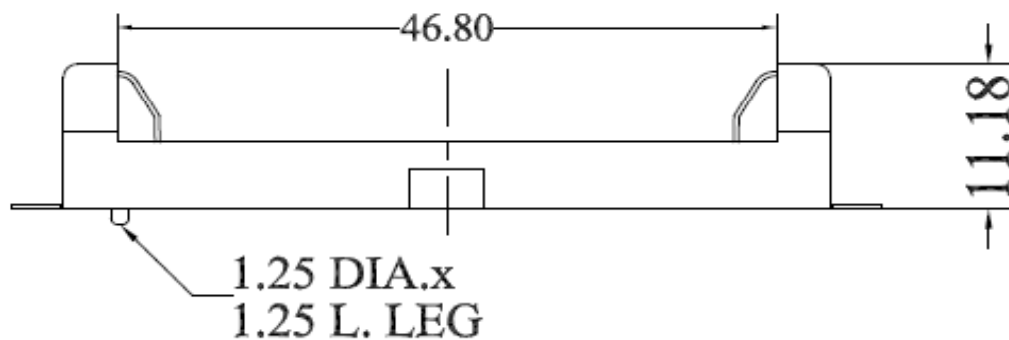
DRW:	Jason	CHKD	Wilson	MATL:	Wilson	TOLERANCE	Mason	DATE	29.08.2017
APPD:	Schumi			FINISH	Jamy		Sheet No.		2 from 5

EDCON-COMPONENTS



Technical Drawing

PCB Layout



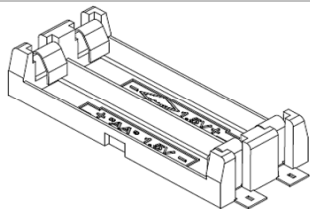
**SMD Battery Holder Type AAA
Two Cell**

Part No.: **B45004**

Customer:

DRW:	Jason	CHKD	Wilson	MATL:	Wilson	TOLERANCE	Mason	DATE	29.08.2017
APPD:	Schumi			FINISH	Jamy		Sheet No.	3 from 5	

EDCON-COMPONENTS



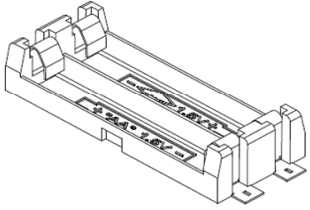
Ordering Informations

Customer	Number of Cell	ROHS	Packing Code							
B45004	AAA	R	TY							

AAA= Two Cell	R= ROHS Conform	TY= Tray Package
	N= NON ROHS Conform	IV= Individuell Package

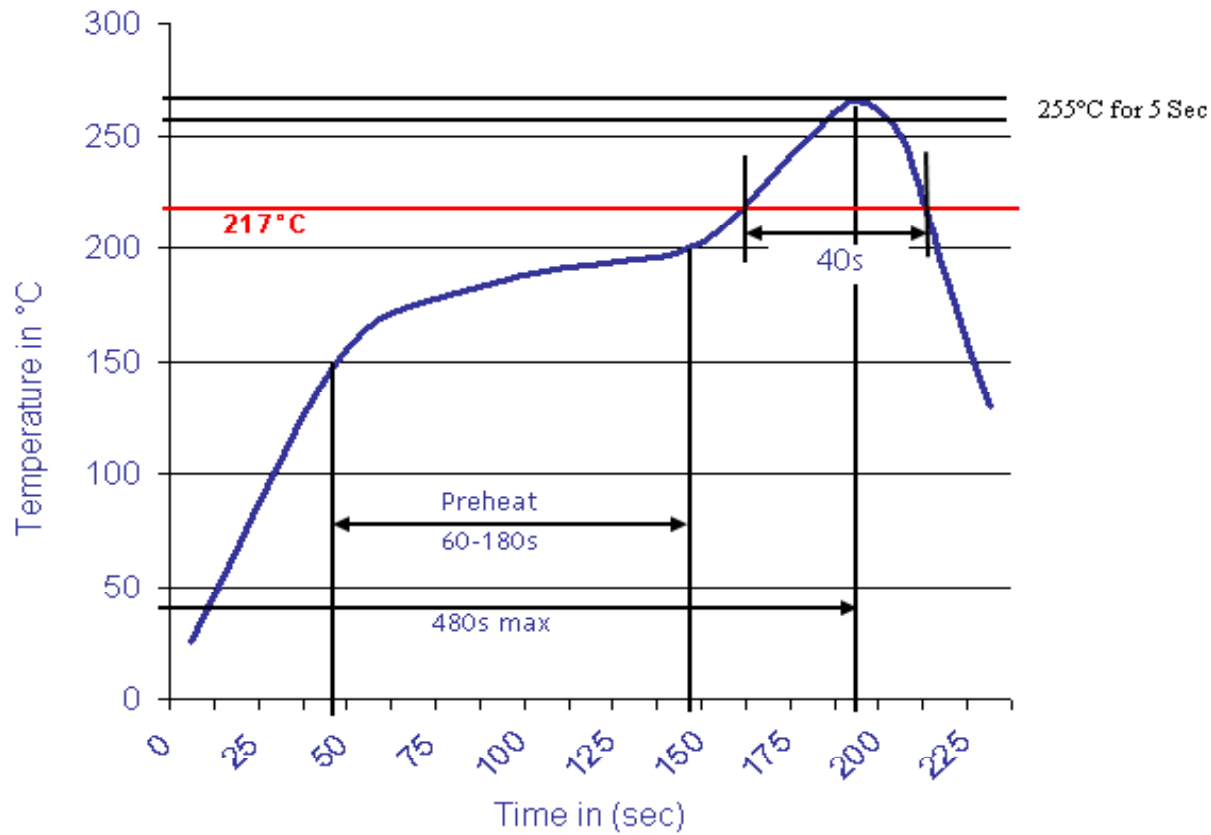
SMD Battery Holder Type AAA Two Cell	
Part No.:	B45004
Customer:	

DRW:	Jason	CHKD	Wilson	MATL:	Wilson	TOLERANCE	Mason	DATE	29.08.2017
APPD:	Schumi			FINISH	Jamy		Sheet No.		4 from 5



Soldering Profile Curve

Classification Reflow Profile (JEDEC J-STD-020C)



SMD Battery Holder Type AAA Two Cell	
Part No.:	B45004
Customer:	

DRW:	Jason	CHKD	Wilson	MATL:	Wilson	TOLERANCE	Mason	DATE	29.08.2017
APPD:	Schumi			FINISH	Jamy		Sheet No.		5 from 5