



DATA SHEET

SMT M12 Male Sensor Connector for 180° PCB Mounting

Serie: T61E172

| | |
|--|----------------|
| SMT M12 Male Sensor Connector for 180° PCB Mounting | |
| Serie No.: | T61E172 |
| Customer: | |

| | | | | | | | | | |
|-------|--------|------|--------|--------|--------|-----------|-----------|------|------------|
| DRW: | Jason | CHKD | Wilson | MATL: | Wilson | TOLERANCE | Mason | DATE | 04.12.2022 |
| APPD: | Schumi | | | FINISH | Jamy | | Sheet No. | | 1 from 7 |

EDCON-COMPONENTS



Contact



Technical Description

| | |
|------------------------------|---|
| Sensor Connector | Size M12 |
| Number of Position | 2,3,4,5,6,8,12,17 |
| Coding | Type A + D |
| Pin-Type: | Male |
| Orientation: | Straight |
| Wire Termination: | SMD PCB Soldering |
| Rated current | Look number of Positions |
| Rated Voltage | Look number of Positions |
| Insulation Resistance: | ≥ 100MΩ |
| Contact Resistance: | ≤ 3mΩ |
| Temperature Range: | .-40°C to + 85°C |
| Material Connector Contacts: | Brass |
| Contact Plating: | Gold Plated 3μ |
| Material Insert / Housing: | LCP |
| Coupling Nut / screw: | Brass with nickel plated |
| Shielding: | Non-Shielded |
| Protection Degree: | IP68 in locked status |
| Overmould/ Shell: | Metal shell |
| Screw / Nut Material: | Brass C3604 w 120μ" nickel Plated CNC Parts |
| Material Female Contacts: | Phosphor Bronze C5441 w. 3μ gold plated on nickel base, machined sold pin |
| Flame retardant degree: | UL94V-0 |
| Sealing: | O-ring (Rubber) |
| Norm: | IEC 61076-2-101 |
| Lifetime: | >200 Cycles |

Description and Applications

EDCON offer a complete line of M12 panel mount connector solutions for enclosure, panel and PCB applications. These M12 connector are offered in both versions Male & Female and are rated to IP67. These connector are designed for both front mounting and rear mounting with PG9 panel locking thread.

Standard sensor, actuator, encoder, servo motors
 Factory automation and process control
 Fieldbus: DeviceNet, CANopen, Profibus, Ethernet, NMEA 2000
 Industrial instrumentation
 Packaging, labeling and logistic devices
 Industrial safety light curtain, light grid, switches
 Commercial electronics PCBA
 Power supply
 LED display panel & outdoor LED lighting

| | | | | | Tolerances unless otherwise specified (mm) | | | | | SMT M12 Male Sensor Connector for 180° PCB Mounting |
|--------------|--------------|--------------|------------------|------------------|--|--|--|--|--|---|
| X= | X.X= | X.XX= | X.XXX= | Angle | | | | | | |
| ±0,35 | ±0,25 | ±0,20 | ±0,15 | ±5° | | | | | | Part No.: T61E172 |
| DRW: Jason | CHKD: Wilson | MATL: Wilson | TOLERANCE: Mason | DATE: 04.12.2022 | | | | | | Customer: |
| APPD: Schumi | FINISH: Jamy | Sheet No. | | | 2 from 7 | | | | | |

www.edcon-components.com

email: info@edcon-components.com

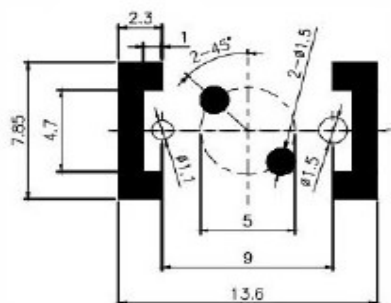
EDCON-COMPONENTS



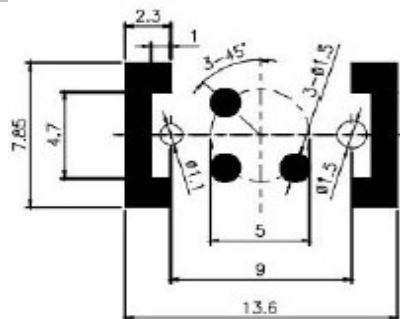
Contact



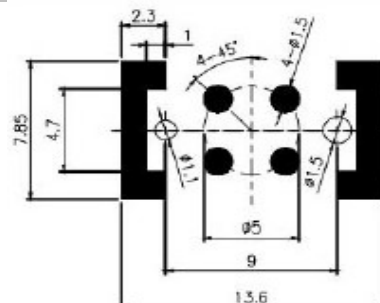
PCB-Layout



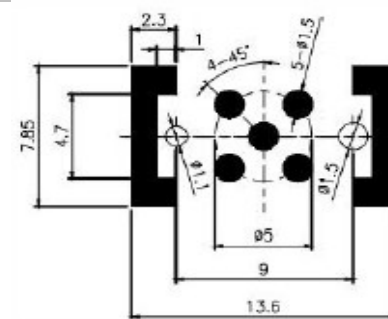
2P



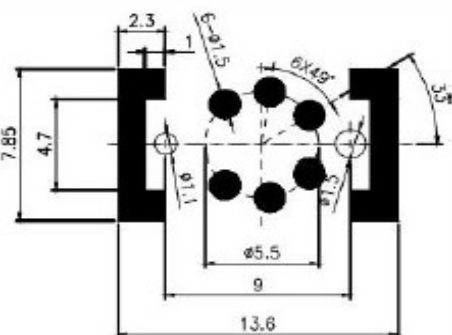
3P



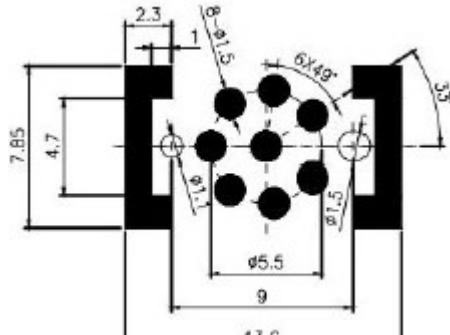
4P



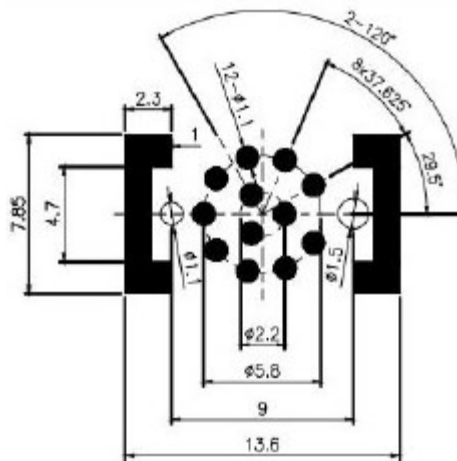
5P



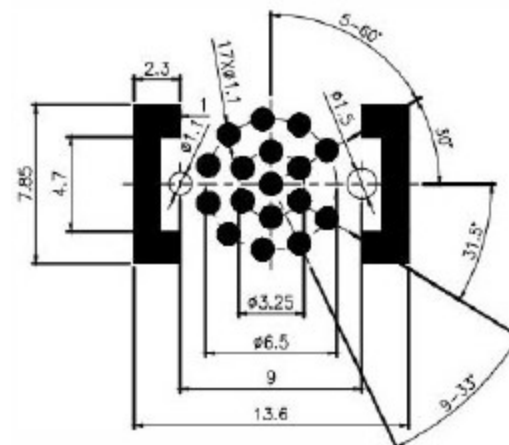
6P



8P



12P



17P

**SMT M12 Male Sensor
Connector for 180° PCB
Mounting**

Part No.: **T61E172**

| | | | | | | | | | |
|-------|--------|------|--------|--------|--------|-----------|-----------|------|------------|
| DRW: | Jason | CHKD | Wilson | MATL: | Wilson | TOLERANCE | Mason | DATE | 04.12.2022 |
| APPD: | Schumi | | | FINISH | Jamy | | Sheet No. | | 4 from 7 |

Customer: email: info@edcon-components.com

www.edcon-components.com

Copyright by S.Tiede

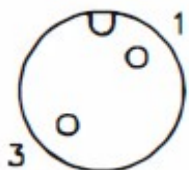
EDCON-COMPONENTS



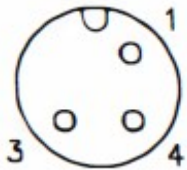
Contact



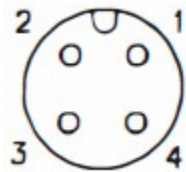
Coding Diagramm



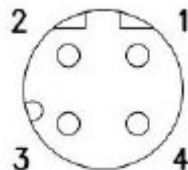
2Pos. Code A



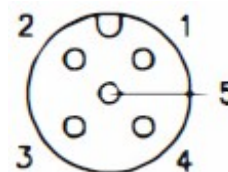
3Pos. Code A



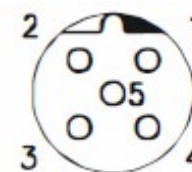
4Pos. Code A



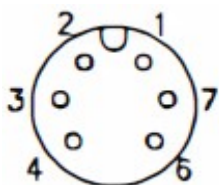
4Pos. Code D



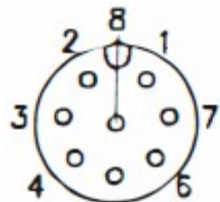
5Pos. Code A



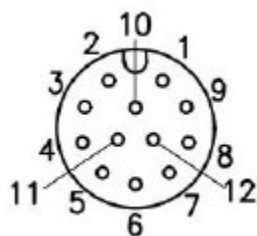
5Pos. Code B



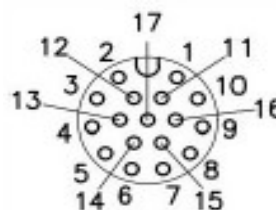
6Pos. Code A



8Pos. Code A



12Pos. Code A



17Pos. Code A

**SMT M12 Male Sensor
Connector for 180° PCB
Mounting**

Part No.: **T61E172**

| | | | | | | | | | | |
|-------|--------|------|--------|--------|--------|-----------|-----------|----------|------------|-----------|
| DRW: | Jason | CHKD | Wilson | MATL: | Wilson | TOLERANCE | Mason | DATE | 04.12.2022 | Customer: |
| APPD: | Schumi | | | FINISH | Jamy | | Sheet No. | 5 from 7 | | |

www.edcon-components.com

email: info@edcon-components.com

EDCON-COMPONENTS



Contact



Ordering Informations

| Serie | No. of Pos. | Contact Plating | Insulator Colour | Code | Special function | ROHS | Packing Code | | | |
|----------------|-------------------|---------------------------|------------------|-----------------------------|--------------------------------|----------------------------|---------------------------------|--|--|--|
| T61E172 | 02 | AU | BK | A | NN | R | TY | | | |
| | 02= 2Pos. | AU= Gold-Plated 3µ | BK= Black | A= Connecting Code A | NN= No special function | R= ROHS Conform | TY= Tray Package | | | |
| | 03= 3Pos. | | | B= Connecting Code B | | N= NON ROHS Conform | IV= Individual Package | | | |
| | 04= 4Pos. | | | D= Connecting Code D | | | TR= Tape/Reel on request | | | |
| | 05= 5Pos. | | | | | | | | | |
| | 06= 6Pos. | | | | | | | | | |
| | 08= 8Pos. | | | | | | | | | |
| | 12= 12Pos. | | | | | | | | | |
| | 17= 17Pos. | | | | | | | | | |

SMT M12 Male Sensor Connector for 180° PCB Mounting

Part No.: **T61E172**

| | | | | | | | | | |
|-------|--------|------|----------|--------|--------|-----------|-----------|----------|------------|
| DRW: | Jason | CHKD | Wilson | MATL: | Wilson | TOLERANCE | Mason | DATE | 04.12.2022 |
| APPD: | Schumi | | Original | FINISH | Jamy | | Sheet No. | 6 from 7 | |

Customer:

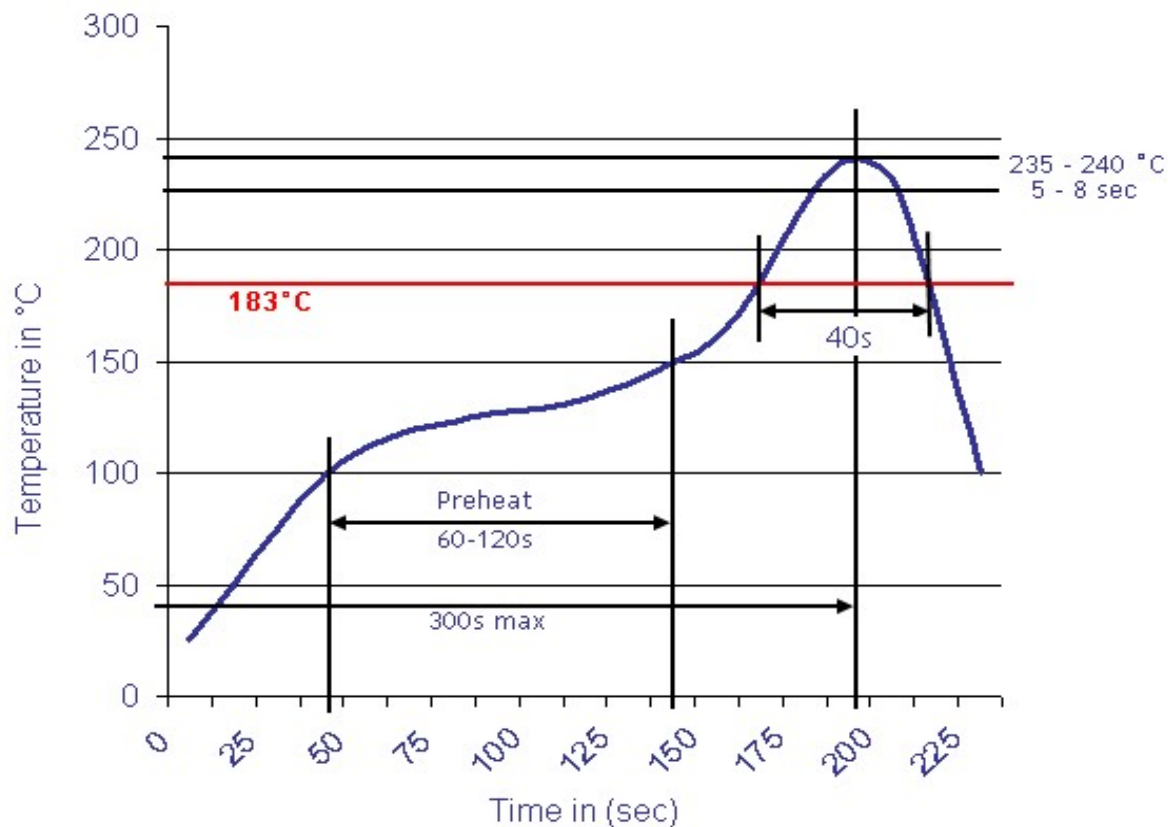


Contact



Soldering Profile Curve

Classification Reflow Profile (JEDEC J-STD-020C)



| | |
|--|----------------|
| SMT M12 Male Sensor Connector for 180° PCB Mounting | |
| Part No.: | T61E172 |
| Customer: | |

| | | | | | | | | | |
|-------|--------|-------|--------|---------|--------|------------|-----------|-------|------------|
| DRW: | Jason | CHKD: | Wilson | MATL: | Wilson | TOLERANCE: | Mason | DATE: | 04.12.2022 |
| APPD: | Schumi | | | FINISH: | Jamy | | Sheet No. | | 7 from 7 |