



DATA SHEET

SMT M12 Female Sensor Connector for 180° PCB Mounting

Serie: T61E171

SMT M12 Female Sensor Connector for 180° PCB Mounting	
Serie No.:	T61E171
Customer:	

DRW:	Jason	CHKD	Wilson	MATL:	Wilson	TOLERANCE	Mason	DATE	04.12.2022
APPD:	Schumi			FINISH	Jamy		Sheet No.		1 from 7

EDCON-COMPONENTS



Contact



Technical Description

Sensor Connector	Size M12
Number of Position	2,3,4,5,6,8,12,17
Coding	Type A + D
Pin-Type:	Male
Orientation:	Straight
Wire Termination:	SMD PCB Soldering
Rated current	Look number of Positions
Rated Voltage	Look number of Positions
Insulation Resistance:	≥ 100MΩ
Contact Resistance:	≤ 3mΩ
Temperature Range:	.-40°C to + 85°C
Material Connector Contacts:	Brass
Contact Plating:	Gold Plated 3μ
Material Insert / Housing:	LCP
Coupling Nut / screw:	Brass with nickel plated
Shielding:	Non-Shielded
Protection Degree:	IP68 in locked status
Overmould/ Shell:	Metal shell
Screw / Nut Material:	Brass C3604 w 120μ" nickel Plated CNC Parts
Material Female Contacts:	Phosphor Bronze C5441 w. 3μ gold plated on nickel base, machined sold pin
Flame retardant degree:	UL94V-0
Sealing:	O-ring (Rubber)
Norm:	IEC 61076-2-101
Lifetime:	>200 Cycles

Description and Applications

EDCON offer a complete line of M12 panel mount connector solutions for enclosure, panel and PCB applications. These M12 connector are offered in both versions Male & Female and are rated to IP67. These connector are designed for both front mounting and rear mounting with PG9 panel locking thread.

Standard sensor, actuator, encoder, servo motors
 Factory automation and process control
 Fieldbus: DeviceNet, CANopen, Profibus, Ethernet, NMEA 2000
 Industrial instrumentation
 Packaging, labeling and logistic devices
 Industrial safety light curtain, light grid, switches
 Commercial electronics PCBA
 Power supply
 LED display panel & outdoor LED lighting

					Tolerances unless otherwise specified (mm)					SMT M12 Female Sensor Connector for 180° PCB Mounting
					X=	X.X=	X.XX=	X.XXX=	Angle	
					±0,35	±0,25	±0,20	±0,15	±5°	Customer:
DRW:	Jason	CHKD	Wilson	MATL:	Wilson	TOLERANCE	Mason	DATE	04.12.2022	
APPD:	Schumi			FINISH	Jamy		Sheet No.		2 from 7	

www.edcon-components.com

email: info@edcon-components.com

EDCON-COMPONENTS

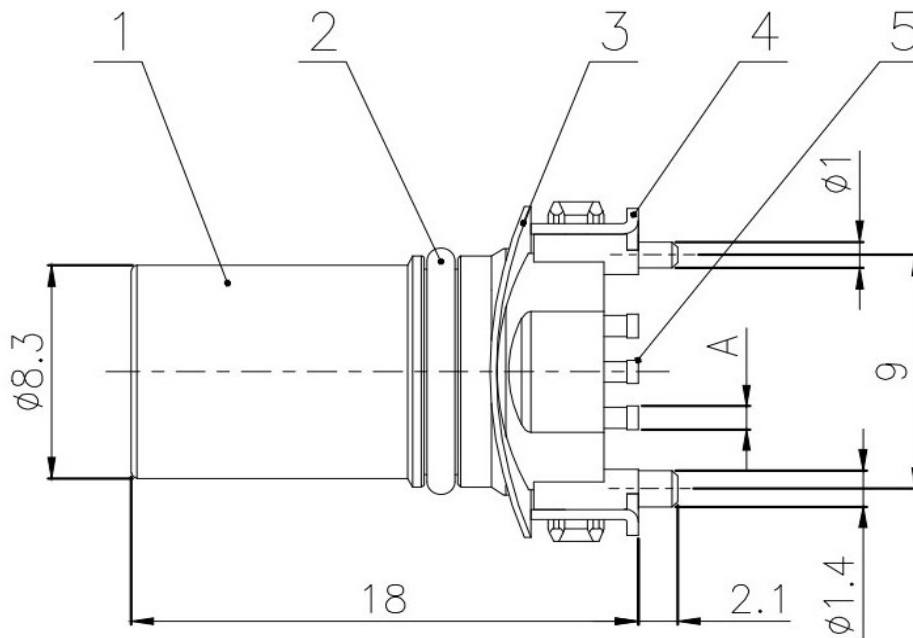
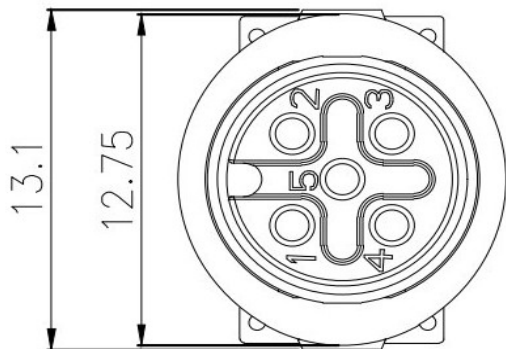


Contact



Number of contacts	2	3	4	5	6	8	12	17
Rated Voltage (V)	250			125	60		30	30
Rated Current (A)	4			2		1,5	1,5	
Contact Resistance	≤3 mΩ							
Degree of Protection	IP68							
Mechanical Operation	> 200cycles							
Temp.Range	-40°C to +80°C							
Withstanding Voltage:	2,5KV		1,5KV		0,8KV			
Pin Diameter: (A)	2P ~ 8P = 0,9mm / 12P+17P = 0,7mm							

No.	Specification	Unit	Qty.
1	Size M12 / Material LCP	PCS	1
2	Panel O ring, NBR, black	PCS	1
3	Body Dimension Ø=12,75x Ø19,75-H0.2	PCS	1
4	PCB Body Contact,	PCS	2
5	Contact CuSn gold plated	PCS	x



SMT M12 Female Sensor Connector for 180° PCB Mounting

Part No.: **T61E171**

DRW:	Jason	CHKD:	Wilson	MATL:	Wilson	TOLERANCE:	Mason	DATE:	04.12.2022
APPD:	Schumi			FINISH:	Jamy		Sheet No.		3 from 7

www.edcon-components.com

email: info@edcon-components.com

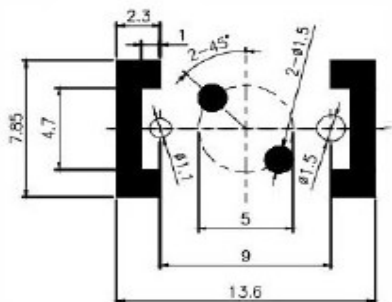
EDCON-COMPONENTS



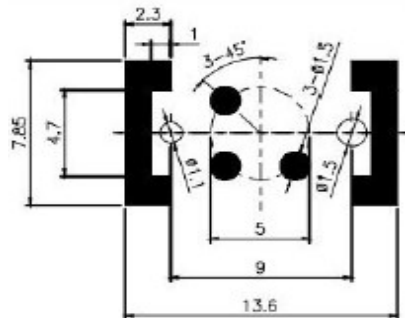
Contact



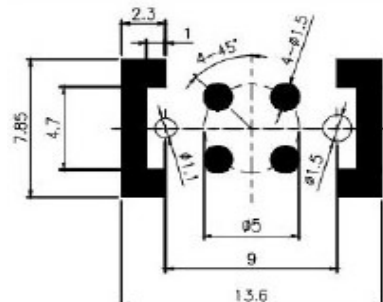
PCB-Layout



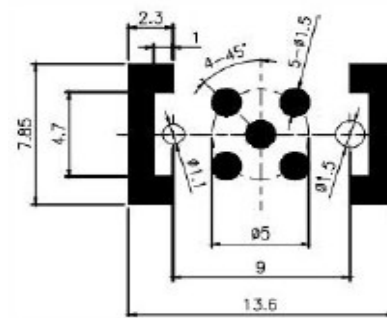
2P



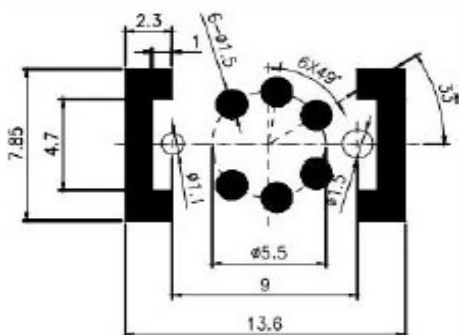
3P



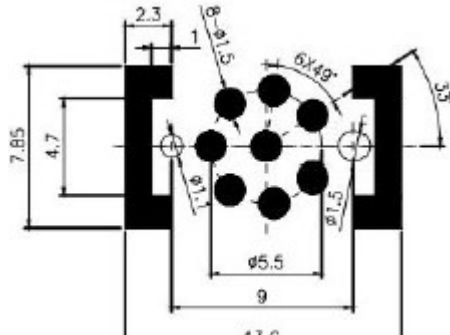
4P



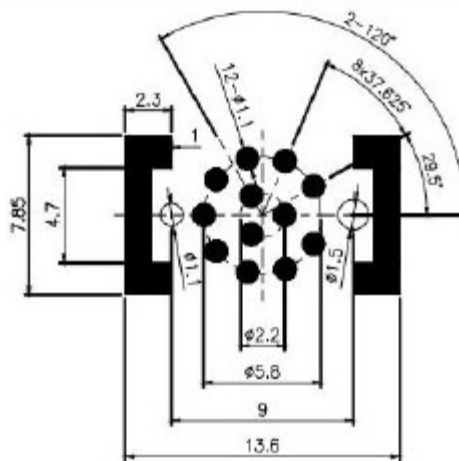
5P



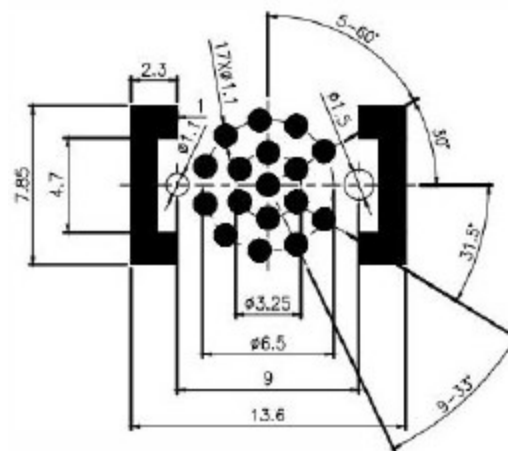
6P



8P



12P



17P

**SMT M12 Female Sensor
Connector for 180° PCB
Mounting**

Part No.: **T61E171**

DRW:	Jason	CHKD	Wilson	MATL:	Wilson	TOLERANCE	Mason	DATE	04.12.2022
APPD:	Schumi			FINISH	Jamy		Sheet No.		4 from 7

Customer: email: info@edcon-components.com

www.edcon-components.com

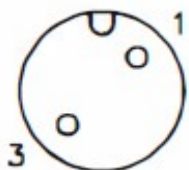
EDCON-COMPONENTS



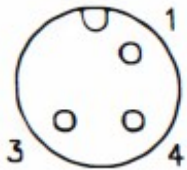
Contact



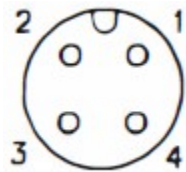
Coding Diagramm



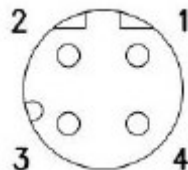
2Pos. Code A



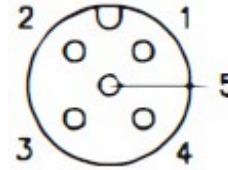
3Pos. Code A



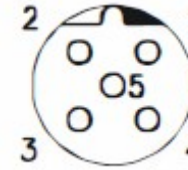
4Pos. Code A



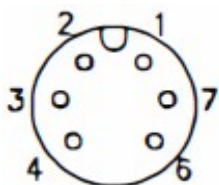
4Pos. Code D



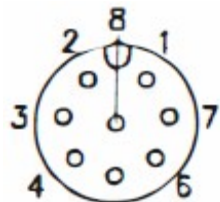
5Pos. Code A



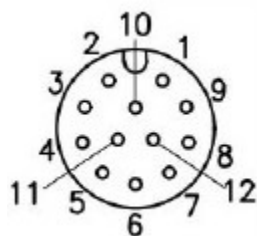
5Pos. Code B



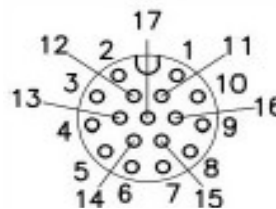
6Pos. Code A



8Pos. Code A



12Pos. Code A



17Pos. Code A

**SMT M12 Female Sensor
Connector for 180° PCB
Mounting**

Part No.: **T61E171**

DRW:	Jason	CHKD	Wilson	MATL:	Wilson	TOLERANCE	Mason	DATE	04.12.2022	Customer:
APPD:	Schumi			FINISH	Jamy		Sheet No.	5 from 7		

www.edcon-components.com

email: info@edcon-components.com

EDCON-COMPONENTS



Contact



Ordering Informations

Serie	No. of Pos.	Contact Plating	Insulator Colour	Code	Special function	ROHS	Packing Code			
T61E171	02	AU	BK	A	NN	R	TY			
	02= 2Pos.	AU= Gold-Plated 3µ	BK= Black	A= Connecting Code A	NN= No special function	R= ROHS Conform	TY= Tray Package			
	03= 3Pos.			B= Connecting Code B		N= NON ROHS Conform	IV= Individual Package			
	04= 4Pos.			D= Connecting Code D			TR= Tape/Reel on request			
	05= 5Pos.									
	06= 6Pos.									
	08= 8Pos.									
	12= 12Pos.									
	17= 17Pos.									

SMT M12 Female Sensor Connector for 180° PCB Mounting	
Part No.:	T61E171
Customer:	

DRW:	Jason	CHKD	Wilson	MATL:	Wilson	TOLERANCE	Mason	DATE	04.12.2022
APPD:	Schumi		Original	FINISH	Jamy		Sheet No.	6 from 7	

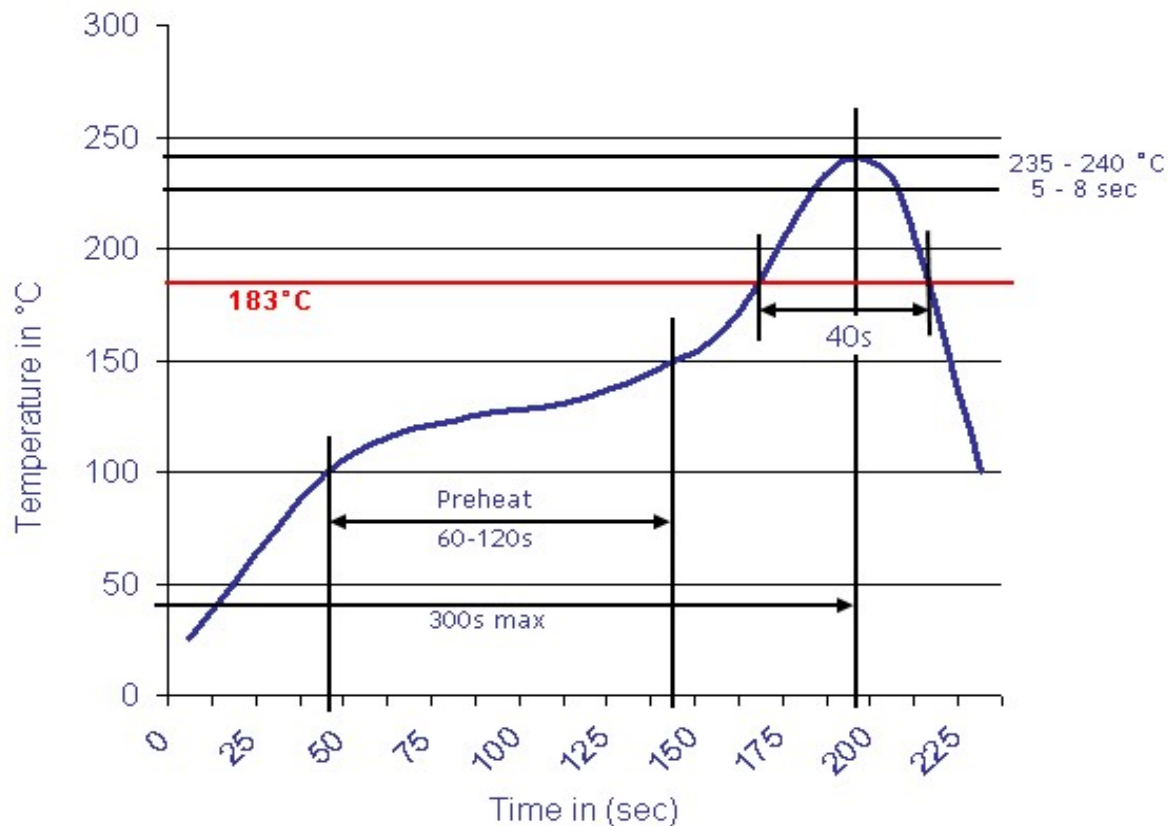


Contact



Soldering Profile Curve

Classification Reflow Profile (JEDEC J-STD-020C)



SMT M12 Female Sensor Connector for 180° PCB Mounting	
Part No.:	T61E171
Customer:	

DRW:	Jason	CHKD:	Wilson	MATL:	Wilson	TOLERANCE:	Mason	DATE:	04.12.2022
APPD:	Schumi			FINISH:	Jamy		Sheet No.		7 from 7