

# EDCON-COMPONENTS



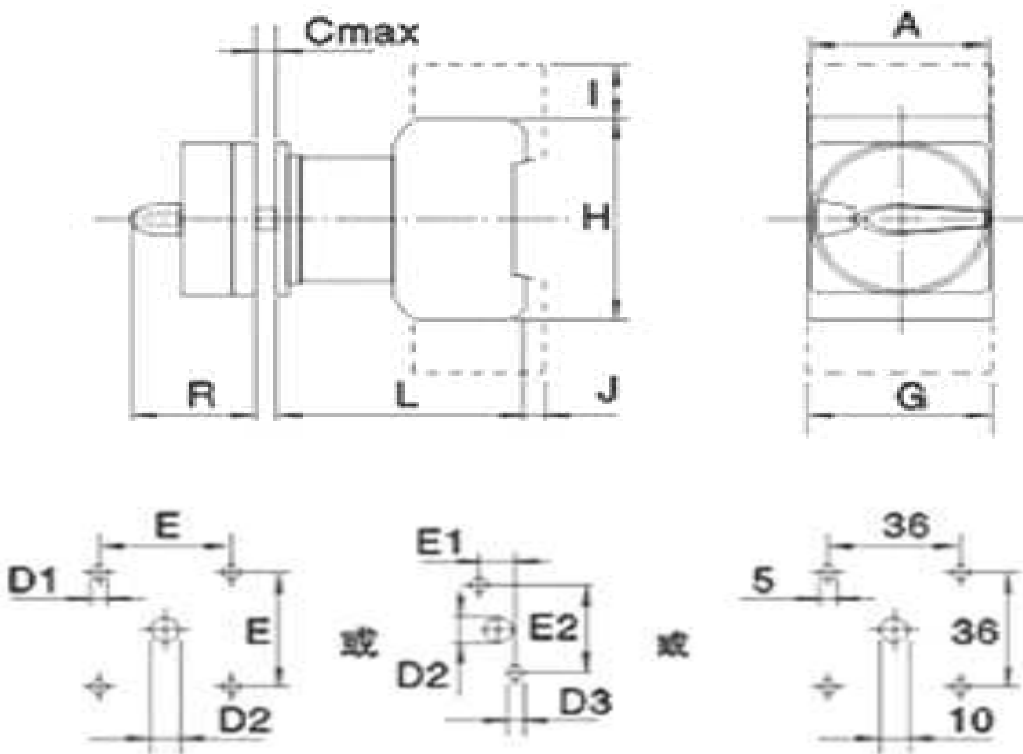
## Application

EDCON-COMPONENTS Serie C11 Changeover switch is the load breaking switch to be used control main circuit, auxillary circuit and three phases motor and other loads. It is of hand operated switch, meet with standard IEC947-3/DIN VDE0600 (EN60947-3), release the isolation as well. The switch is used to strat/stop (ON/OFF) urgent stop.

## Technical Parameters

Rated Insulation Voltage (V)	690V		
Rated thermal current (A)	32A		
AC-201A / AC21A (A)	32A		
AC-22A (A)	32A		
Rated operating Voltage	220	380	550
AC-3 ( KW)	4	7,5	7,5
AC-23 (KW)	5,5	11	11

## Drawing for Panel Mount



Dimension (mm)

Type	E	E1	E2	D1	D2	D3	A	L	H	I	G	J	R	Cmax.
<b>Q69002</b>	48	12,2	30	5	10~15	3,5	64	53,8	54	20	42	6	40,1	4

**Changeover Switch 32A**

Part No.: **Q69002**

DRW:	Jason	CHKD	Wilson	MATL:	Wilson	TOLERANCE	Mason	DATE	23.03.2011	Customer:
APPD:	Schumi			FINISH	Jamy		Sheet No.	1 from 2		

# EDCON-COMPONENTS



## Ordering Informations

### Terminal

Serie	Special funtion	ROHS	Packing			
-------	-----------------	------	---------	--	--	--

Q69002	N	R	WC			
--------	---	---	----	--	--	--

N= No special function	R= ROHS Conform	WC= White Carton
	N= NON ROHS Conform	

**Changeover Switch 32A**

Part No.: **Q69002**

DRW:	Jason	CHKD	Wilson	MATL:	Wilson	TOLERANCE	Mason	DATE	23.03.2011	Customer:
APPD:	Schumi			FINISH	Jamy		Sheet No.	2 from 2		