



DATA SHEET

Lithium Coin Cell Type CR-1216

Serie: B20003

Lithium Coin Cell Type CR-1216

Serie No.: **B20003**

Customer:

DRW:	Jason	CHKD	Wilson	MATL:	Wilson	TOLERANCE	Mason	DATE	25.01.2011
APPD:	Schumi			FINISH	Jamy		Sheet No.		1 from 6

EDCON-COMPONENTS



Specifications

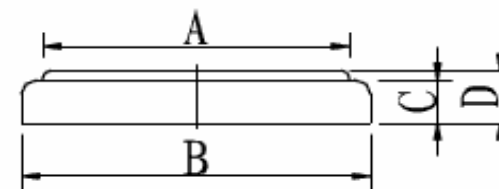
Nominal Voltage	3,0 Volt
Nominal Capacity	25 (mAH)
Continuous standard load	62 (KΩ)
Operating Temperature	. -20 ~ + 60°C
Weight	0,7 gr.

Lead Style

Dimensions (mm)

A	Ø 10,4
B	Ø 12,5 / +0,0 -0,2
C	1,3
D	1,6 / +0.0 -0,3

Technical Drawing



Lithium Coin Cell Type CR-1216

Part No.: **B20003**

Customer:

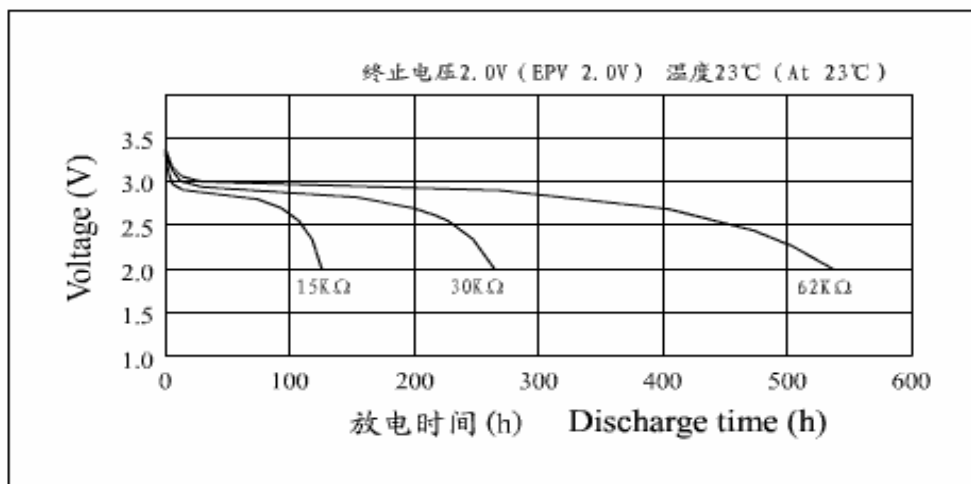
DRW:	Jason	CHKD	Wilson	MATL:	Wilson	TOLERANCE	Mason	DATE	25.01.2011
APPD:	Schumi			FINISH	Jamy		Sheet No.	2 from 6	

EDCON-COMPONENTS

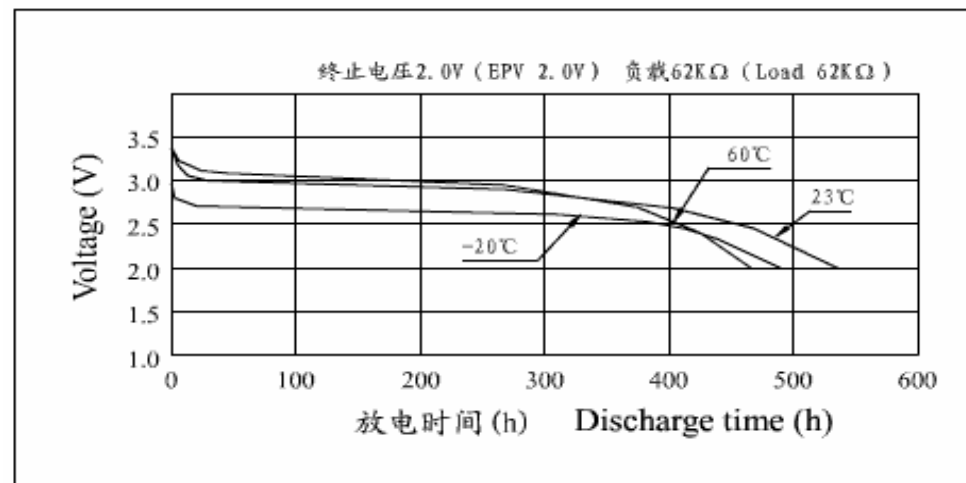


Characteristics Curve

Discharge characteristics



Temperature Characteristics



Lithium Coin Cell Type CR-1216

Part No.: **B20003**

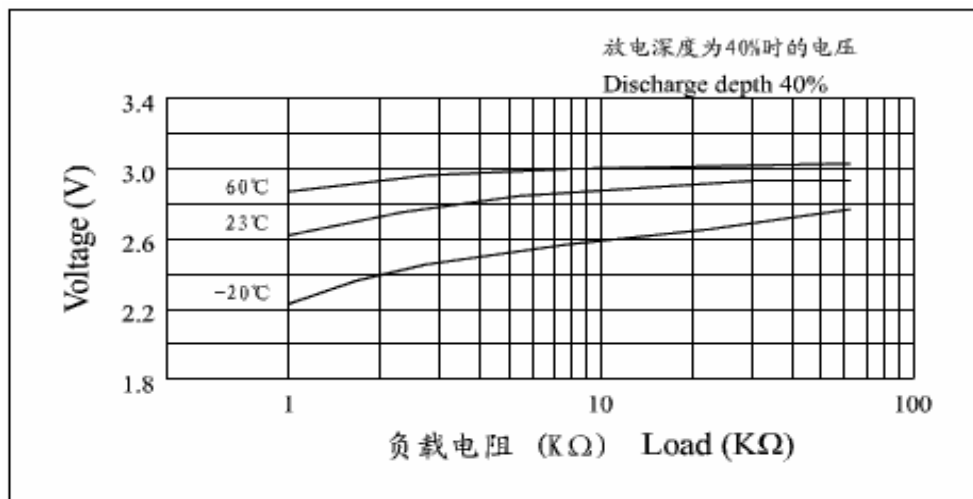
DRW:	Jason	CHKD	Wilson	MATL:	Wilson	TOLERANCE	Mason	DATE	25.01.2011
APPD:	Schumi			FINISH	Jamy		Sheet No.	3 from 6	Customer:

EDCON-COMPONENTS

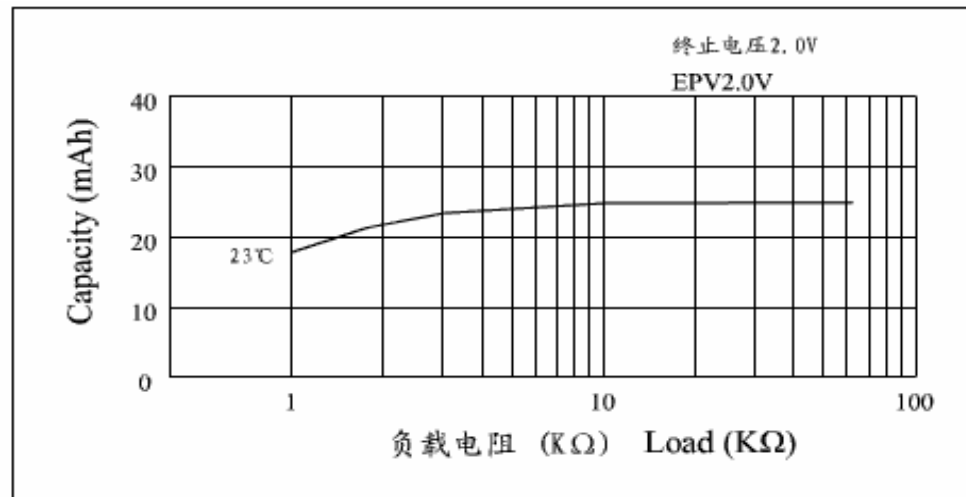


Characteristics Curve

Load vs Operating Voltage



Load vs. Capacity



Lithium Coin Cell Type CR-1216

Part No.: **B20003**

DRW:	Jason	CHKD	Wilson	MATL:	Wilson	TOLERANCE	Mason	DATE	25.01.2011
APPD:	Schumi			FINISH	Jamy		Sheet No.	4 from 6	Customer:

www.edcon-components.com

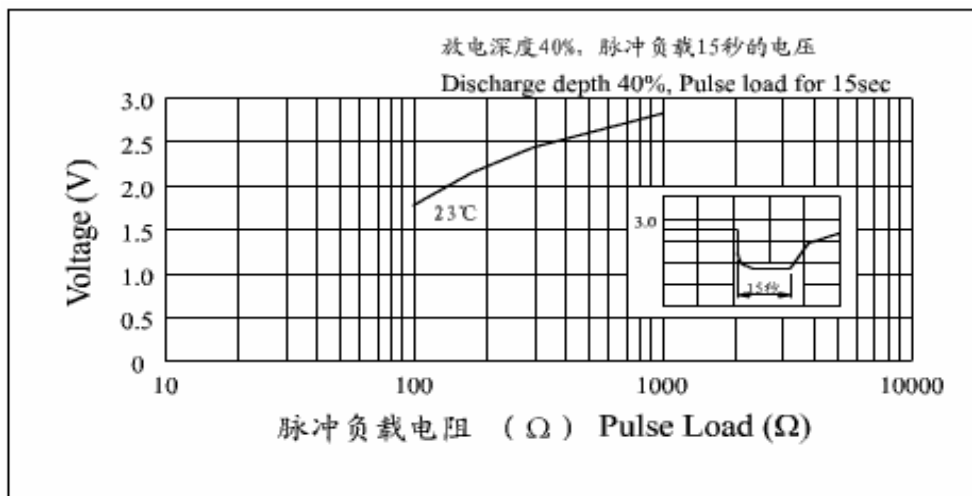
email: info@edcon-components.com

EDCON-COMPONENTS

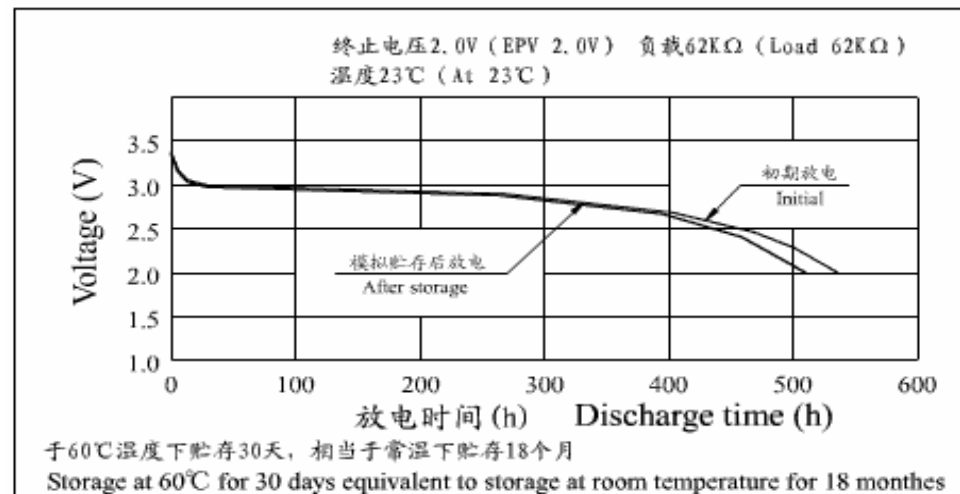


Characteristics Curve

Pulse discharge characteristics



Storage characteristics



Lithium Coin Cell Type CR-1216

Part No.: **B20003**

DRW:	Jason	CHKD	Wilson	MATL:	Wilson	TOLERANCE	Mason	DATE	25.01.2011
APPD:	Schumi			FINISH	Jamy		Sheet No.	5 from 6	Customer:

EDCON-COMPONENTS



Ordering Informations

Serie	Type of Battery	Battery Size	Lead Style	No function	ROHS	Packing Code				
-------	-----------------	--------------	------------	-------------	------	--------------	--	--	--	--

B20003	-	CR	1216	01	0	R	IP			
---------------	---	-----------	-------------	-----------	----------	----------	-----------	--	--	--

CR= NON Rechargeable Lithium	Diameter * Thickness	00= NO function	0= NO function	R= ROHS Conform N= NON ROHS Conform	IP= Industrial Package
		01= Lead Style			TY= Tray Package
		02= Lead Style			B1= Blister 1 Pcs
		03= Lead Style			B5= Blister 5 Pcs
		04= Lead Style			CU= Customer Special

Lithium Coin Cell Type CR-1216

Part No.: **B20003**

Customer:

DRW:	Jason	CHKD	Wilson	MATL:	Wilson	TOLERANCE	Mason	DATE	25.01.2011
APPD:	Schumi			FINISH	Jamy		Sheet No.	6 from 6	