



DATA SHEET

SMD Commun Mode Choke

Serie: F16004

SMD Commun Mode Choke
Serie No.: F16004
Customer:

DRW:	Jason	CHKD	Wilson	MATL:	Wilson	TOLERANCE	Mason	DATE	31.05.2018
APPD:	Schumi			FINISH	Jamy		Sheet No.		1 from 5

EDCON-COMPONENTS



Technical Description

Features:

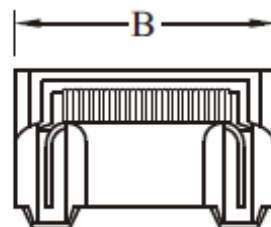
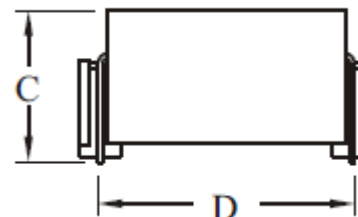
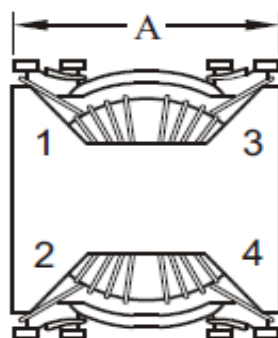
- Toroid Core
- SMD Conctruction
- High Reliability
- Low Profile

Application:

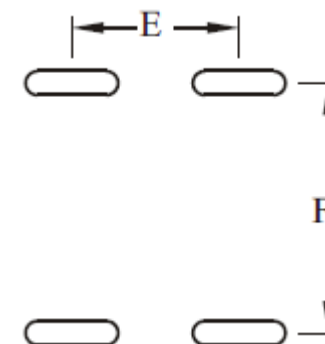
- Commun mode choke for power application
- Filter and Noise Suppression
- Automotive Systems
- Computer Peripheral Equipment
- DC/DC, AC/DC converter

Dimensions & Configuration (mm)

Size Type	A (max.)	B (max.)	C (max.)	D	E	F		
F16004	17,02	19,56	9,90	16,51	11,30	16,76		

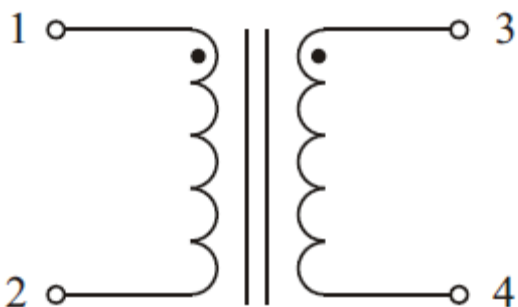


PCB Layout



Schematic

1:1±2%



Tolerance (mm) otherwise specified

X=	X.X=	X.XX=	X.XXX=	Angle
±0,35	±0,25	±0,20	±0,15	±5°

SMD Commun Mode Choke

Part No.: **F16004**

Customer:

DRW:	Jason	Manual	Wilson	MATL:	Wilson	TOLERANCE	Mason	DATE	31.05.2018
APPD:	Schumi			FINISH	Jamy		Sheet No.		2 from 5

www.edcon-components.com

email: info@edcon-components.com

EDCON-COMPONENTS



Electrical Characteristics Table

Ordering Range	Inductance (mH)	DCR (max.) (mΩ)	IDC(max.) (A)		
601	0,60	50	3,6		
591	0,59	21	5,6		
132	1,32	60	3,3		
142	1,47	80	2,8		

customs Range
welcome

SMD Commun Mode Choke	
Part No.:	F16004
Customer:	

DRW:	Jason	CHKD	Wilson	MATL:	Wilson	TOLERANCE	Mason	DATE	31.05.2018
APPD:	Schumi			FINISH	Jamy		Sheet No.		3 from 5

EDCON-COMPONENTS



Ordering Informations

Customer	Ordering Code	Special function	Special function	ROHS	Packing Code					
----------	---------------	------------------	------------------	------	--------------	--	--	--	--	--

F16004	601	N	N	R	TY					
---------------	------------	----------	----------	----------	-----------	--	--	--	--	--

601 = 0,6mH other Ranges like Table	N= No special function	N= No special function	R= ROHS Conform	TY= Tray Package
			N= NON ROHS Conform	IV= Individual Package

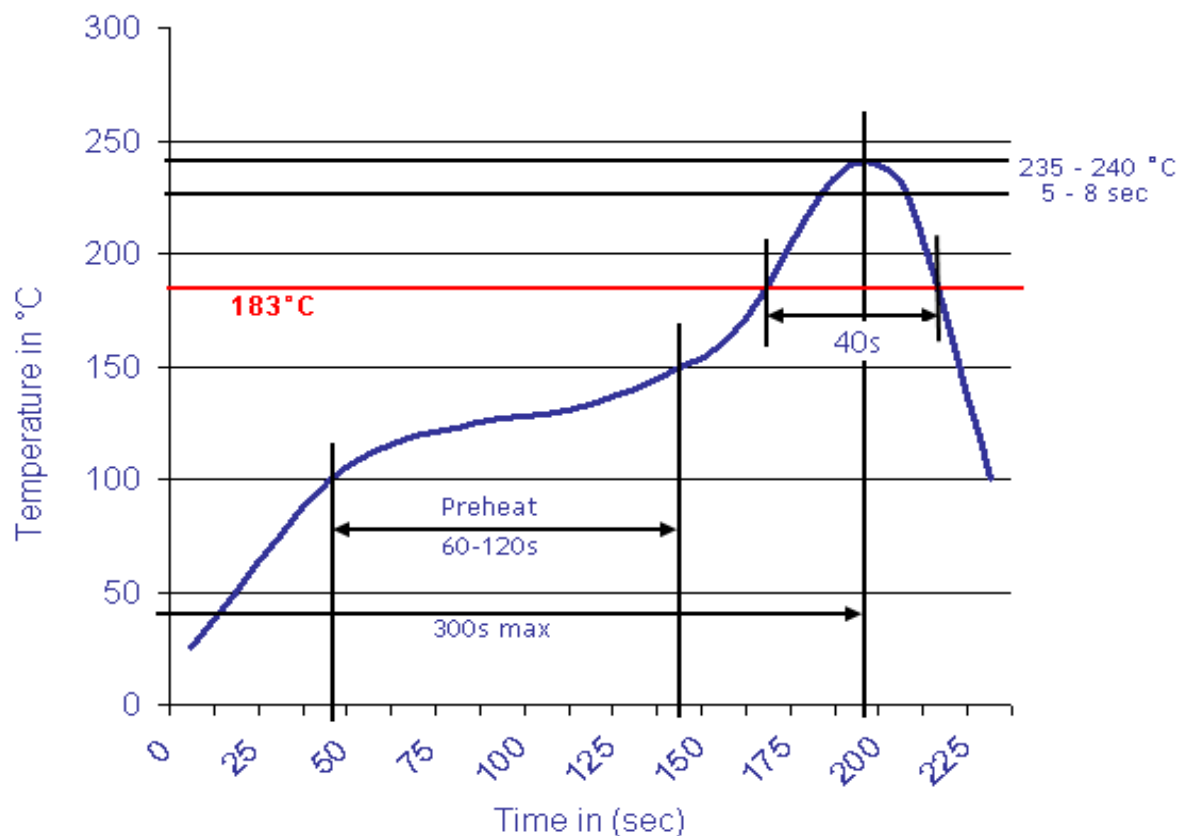
SMD Commun Mode Choke	
Part No.:	F16004
Customer:	

DRW:	Jason	CHKD	Wilson	MATL:	Wilson	TOLERANCE	Mason	DATE	31.05.2018
APPD:	Schumi	HCC102		FINISH	Jamy		Sheet No.		4 from 5



Soldering Profile Curve

Classification Reflow Profile (JEDEC J-STD-020C)



SMD Commun Mode Choke	
Part No.:	F16004
Customer:	

DRW:	Jason	CHKD	Wilson	MATL:	Wilson	TOLERANCE	Mason	DATE	31.05.2018
APPD:	Schumi			FINISH	Jamy		Sheet No.		5 from 5