



DATA SHEET

SMD Commun Mode Choke

Serie: F16003

SMD Commun Mode Choke
Serie No.: F16003
Customer:

DRW:	Jason	CHKD	Wilson	MATL:	Wilson	TOLERANCE	Mason	DATE	31.05.2018
APPD:	Schumi			FINISH	Jamy		Sheet No.		1 from 5

EDCON-COMPONENTS



Technical Description

Features:

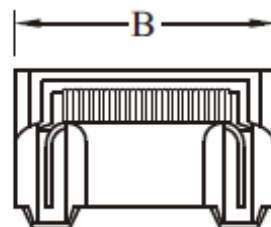
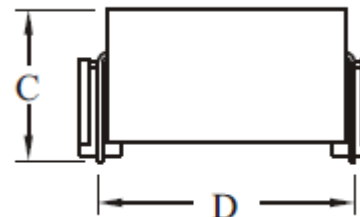
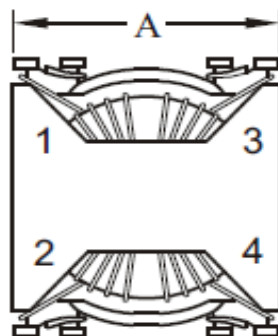
- Toroid Core
- SMD Construction
- High Reliability
- Low Profile

Application:

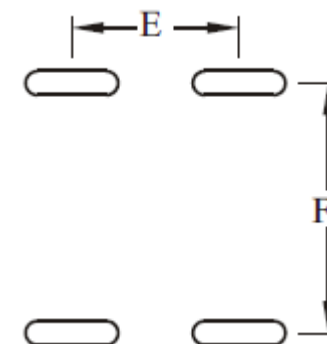
- Common mode choke for power application
- Filter and Noise Suppression
- Automotive Systems
- Computer Peripheral Equipment
- DC/DC, AC/DC converter

Dimensions & Configuration (mm)

Size Type	A (max.)	B (max.)	C (max.)	D	E	F		
F16003	14,22	16,38	8,89	13,21	8,64	13,46		

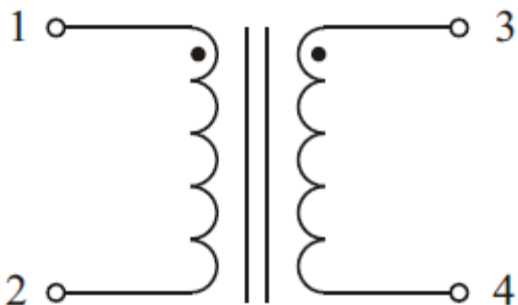


PCB Layout



Schematic

1:1±2%



Tolerance (mm) otherwise specified

X=	X.X=	X.XX=	X.XXX=	Angle
±0,35	±0,25	±0,20	±0,15	±5°

SMD Common Mode Choke

Part No.: **F16003**

Customer:

DRW:	Jason	Manual	Wilson	MATL:	Wilson	TOLERANCE	Mason	DATE	31.05.2018
APPD:	Schumi			FINISH	Jamy		Sheet No.		2 from 5

www.edcon-components.com

email: info@edcon-components.com

EDCON-COMPONENTS



Electrical Characteristics Table

Ordering Range	Inductance (mH)	DCR (max.) (mΩ)	IDC(max.) (A)		
602	6,0	450	1,0		

customs Range
welcome

SMD Commun Mode Choke	
Part No.:	F16003
Customer:	

DRW:	Jason	CHKD	Wilson	MATL:	Wilson	TOLERANCE	Mason	DATE	31.05.2018
APPD:	Schumi			FINISH	Jamy		Sheet No.		3 from 5

EDCON-COMPONENTS



Ordering Informations

Customer	Ordering Code	Special function	Special function	ROHS	Packing Code					
----------	---------------	------------------	------------------	------	--------------	--	--	--	--	--

F16003	602	N	N	R	TY					
---------------	------------	----------	----------	----------	-----------	--	--	--	--	--

602 = 6,0mH other Ranges like Table	N= No special function	N= No special function	R= ROHS Conform	TY= Tray Package
			N= NON ROHS Conform	IV= Individual Package

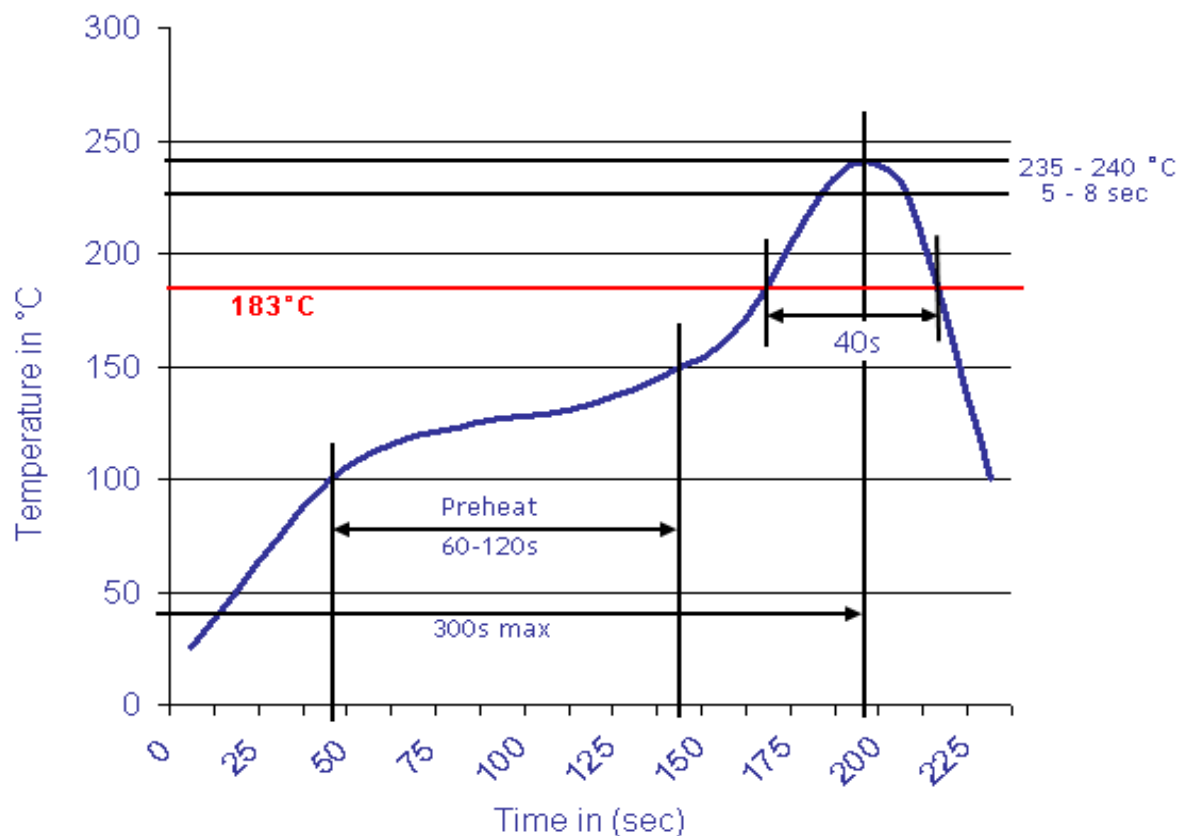
SMD Commun Mode Choke	
Part No.:	F16003
Customer:	

DRW:	Jason	CHKD	Wilson	MATL:	Wilson	TOLERANCE	Mason	DATE	31.05.2018
APPD:	Schumi	HCC102		FINISH	Jamy		Sheet No.		4 from 5



Soldering Profile Curve

Classification Reflow Profile (JEDEC J-STD-020C)



SMD Commun Mode Choke	
Part No.:	F16003
Customer:	

DRW:	Jason	CHKD	Wilson	MATL:	Wilson	TOLERANCE	Mason	DATE	31.05.2018
APPD:	Schumi			FINISH	Jamy		Sheet No.		5 from 5