



DATA SHEET

EMC/EMI Current Compensated Choke

Serie: F13022

EMC/EMI Current Compensated Choke	
Serie No.:	F13022
Customer:	

DRW:	Jason	CHKD	Wilson	MATL:	Wilson	TOLERANCE	Mason	DATE	31.05.2018
APPD:	Schumi			FINISH	Jamy		Sheet No.		1 from 5

EDCON-COMPONENTS



Technical Description

Features:

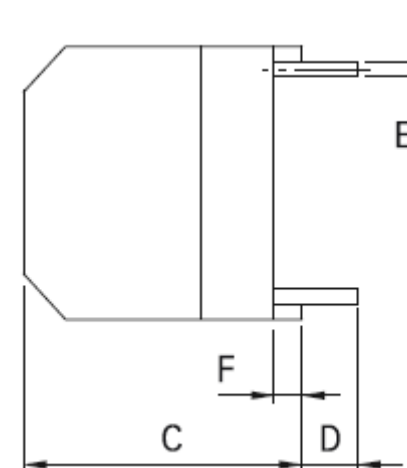
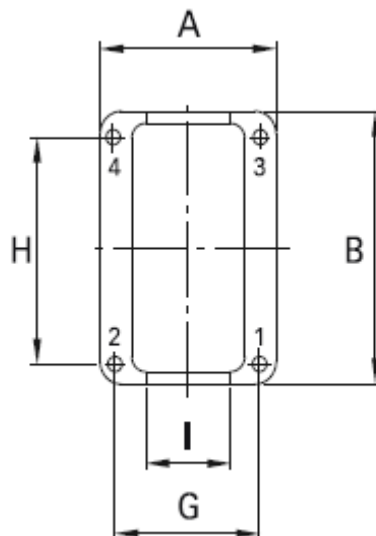
- Dual-Choke configuration
- Small compact design
- Multiple housing options
- Customs-specification available on request

Application:

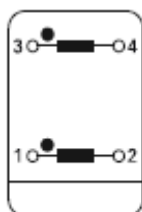
- Phase-angle control circuits in combination with saturating chokes.
- EMI input filters
- Suppressing high interference levels

Dimensions & Configuration (mm)

Size Type	A	B	C	D	E	F	G	H
F13022	18,0	32,0	32,0	4,2	0,7	1,5	15,0	12,5



Schematic



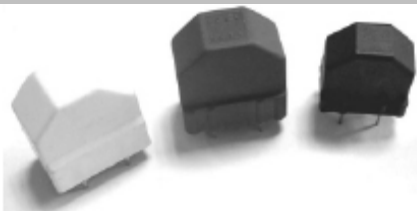
EMC/EMI Current Compensated Choke

Part No.: **F13022**

Customer:

					Tolerance (mm)				
					X=	X.X=	X.XX=	X.XXX=	Angle
DRW:	Jason	Manual	Wilson	MATL:	±0,35	±0,25	±0,20	±0,15	±5°
APPD:	Schumi			FINISH	Wilson	TOLERANCE	Mason	DATE	31.05.2018
					Jamy		Sheet No.		2 from 5

EDCON-COMPONENTS



Electrical Characteristics Table

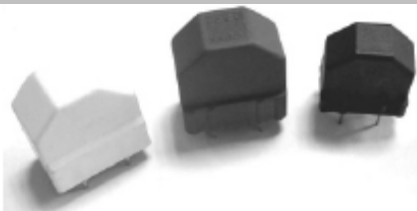
Ordering Range	Inductance (mH)	DCR (max.) (mΩ)	IDC(max.) (A)		
823	82	2700	0,5		
333	33	810	1,0		
273	27	500	1,4		
682	6,8	190	2,0		
332	3,3	66	4,0		
182	1,8	20	6,0		

customs Range
welcome

EMC/EMI Current Compensated Choke	
Part No.:	F13022
Customer:	

DRW:	Jason	CHKD	Wilson	MATL:	Wilson	TOLERANCE	Mason	DATE	31.05.2018
APPD:	Schumi			FINISH	Jamy		Sheet No.		3 from 5

EDCON-COMPONENTS



Ordering Informations

Customer	Ordering Code	Special function	Special function	ROHS	Packing Code					
----------	---------------	------------------	------------------	------	--------------	--	--	--	--	--

F13022	823	N	N	R	TY					
---------------	------------	----------	----------	----------	-----------	--	--	--	--	--

823 = 82mH other Ranges like Table	N= No special function	N= No special function	R= ROHS Conform	TY= Tray Package
			N= NON ROHS Conform	IV= Individual Package

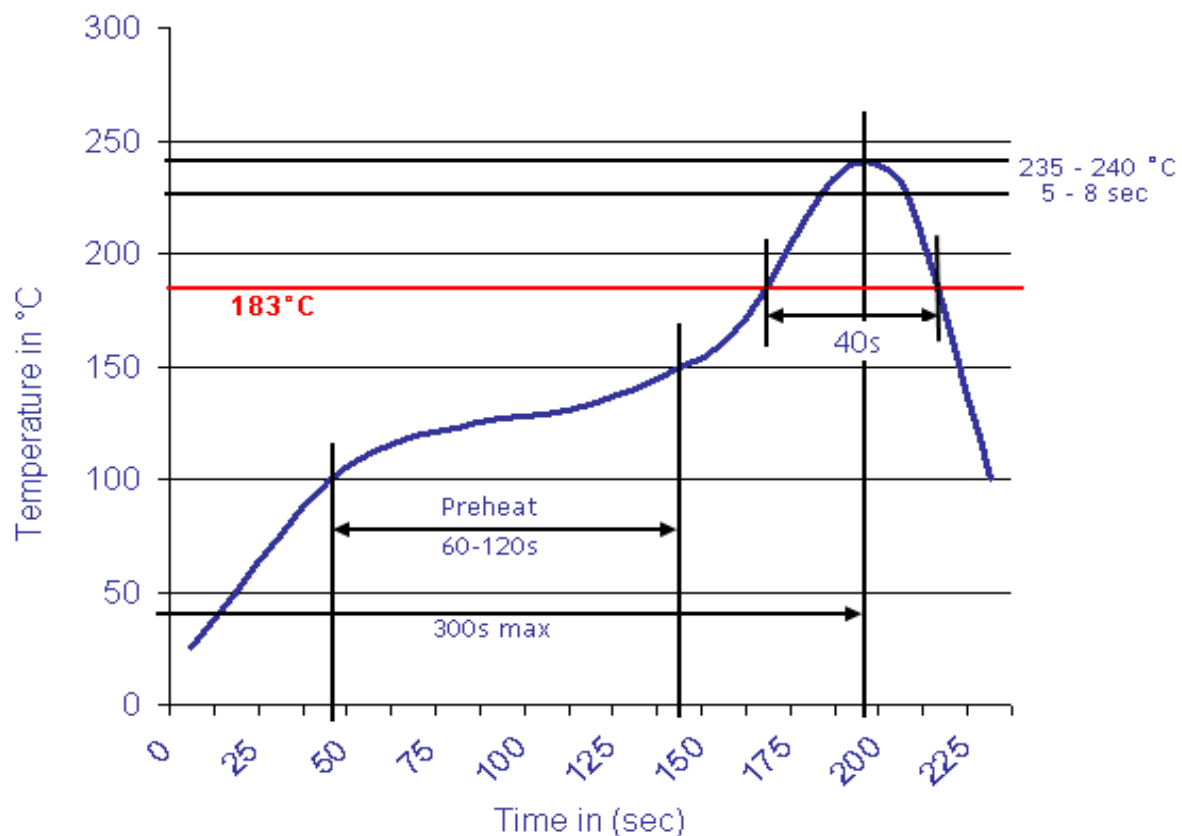
EMC/EMI Current Compensated Choke	
Part No.:	F13022
Customer:	

DRW:	Jason	CHKD	Wilson	MATL:	Wilson	TOLERANCE	Mason	DATE	31.05.2018
APPD:	Schumi			FINISH	Jamy		Sheet No.		4 from 5



Soldering Profile Curve

Classification Reflow Profile (JEDEC J-STD-020C)



EMC/EMI Current Compensated Choke	
Part No.:	F13022
Customer:	

DRW:	Jason	CHKD	Wilson	MATL:	Wilson	TOLERANCE	Mason	DATE	31.05.2018
APPD:	Schumi			FINISH	Jamy		Sheet No.		5 from 5