



# DATA SHEET

## EMC/EMI Current Compensated Choke

### Serie: F13020

<b>EMC/EMI Current Compensated Choke</b>	
Serie No.:	<b>F13020</b>
Customer:	

DRW:	Jason	CHKD	Wilson	MATL:	Wilson	TOLERANCE	Mason	DATE	31.05.2018
APPD:	Schumi			FINISH	Jamy		Sheet No.		1 from 5

# EDCON-COMPONENTS



## Technical Description

### Features:

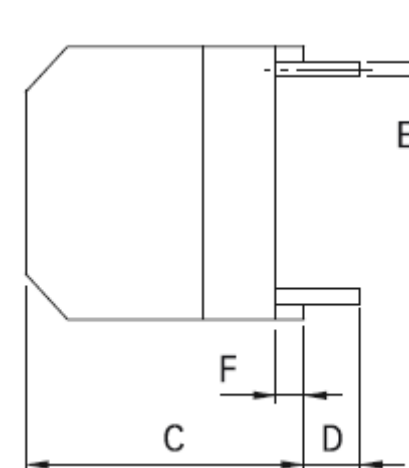
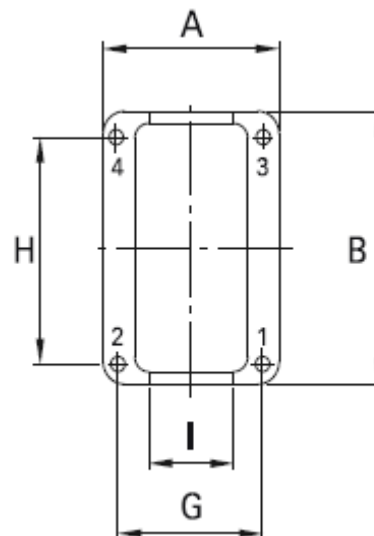
- Dual-Choke configuration
- Small compact design
- Multiple housing options
- Customs-specification available on request

### Application:

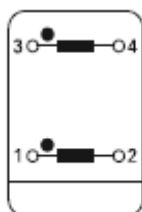
- Phase-angle control circuits in combination with saturating chokes.
- EMI input filters
- Suppressing high interference levels

## Dimensions & Configuration (mm)

Size Type	A	B	C	D	E	F	G	H
F13020	15,5	23,0	25,0	4,0	0,7	1,0	12,5	10,0



## Schematic



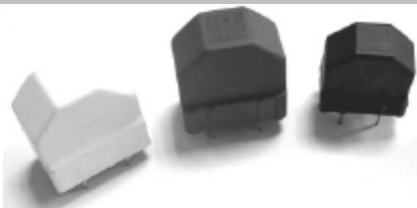
## EMC/EMI Current Compensated Choke

Part No.: **F13020**

Customer:

					Tolerance (mm)				
					X=	X.X=	X.XX=	X.XXX=	Angle
DRW:	Jason	Manual	Wilson	MATL:	±0,35	±0,25	±0,20	±0,15	±5°
APPD:	Schumi			FINISH	Wilson	TOLERANCE	Mason	DATE	31.05.2018
					Jamy		Sheet No.		2 from 5

# EDCON-COMPONENTS



Electrical Characteristics Table

Ordering Range	Inductance (mH)	DCR (max.) (mΩ)	IDC(max.) (A)		
473	47	1750	0,3		
393	39	810	0,5		
273	27	500	0,8		
153	15	375	1,0		
103	10	200	1,2		
682	6,8	130	1,5		
422	4,2	102	2,0		
332	3,3	72	2,5		
202	2,0	55	3,0		
151	1,5	35	4,0		

customs Range  
welcome

<b>EMC/EMI Current Compensated Choke</b>	
Part No.:	<b>F13020</b>
Customer:	

DRW:	Jason	CHKD	Wilson	MATL:	Wilson	TOLERANCE	Mason	DATE	31.05.2018
APPD:	Schumi			FINISH	Jamy		Sheet No.		3 from 5

# EDCON-COMPONENTS



## Ordering Informations

Customer	Ordering Code	Special function	Special function	ROHS	Packing Code					
----------	---------------	------------------	------------------	------	--------------	--	--	--	--	--

<b>F13020</b>	<b>473</b>	<b>N</b>	<b>N</b>	<b>R</b>	<b>TY</b>					
---------------	------------	----------	----------	----------	-----------	--	--	--	--	--

473 = 47mH other Ranges like Table	N= No special function	N= No special function	R= ROHS Conform	TY= Tray Package
			N= NON ROHS Conform	IV= Individual Package

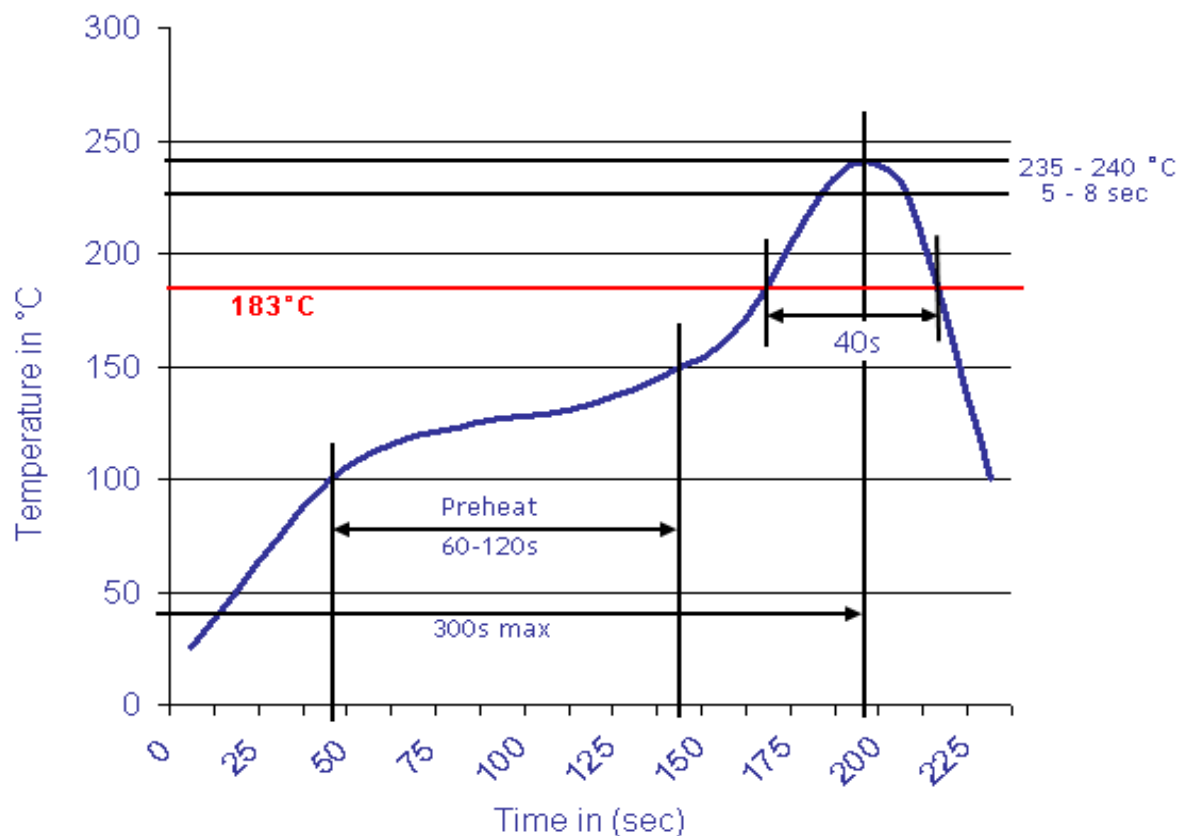
<b>EMC/EMI Current Compensated Choke</b>	
Part No.:	<b>F13020</b>
Customer:	

DRW:	Jason	CHKD	Wilson	MATL:	Wilson	TOLERANCE	Mason	DATE	31.05.2018
APPD:	Schumi			FINISH	Jamy		Sheet No.		4 from 5



Soldering Profile Curve

Classification Reflow Profile (JEDEC J-STD-020C)



<b>EMC/EMI Current Compensated Choke</b>	
Part No.:	<b>F13020</b>
Customer:	

DRW:	Jason	CHKD	Wilson	MATL:	Wilson	TOLERANCE	Mason	DATE	31.05.2018
APPD:	Schumi			FINISH	Jamy		Sheet No.		5 from 5