

# EDCON-COMPONENTS



**SPECIFICATIONS** : Slide switches are known for providing selection of two or more switch positions for engagement of respective switch contacts. Electrical slide switches have long been used to control the operation of many devices, including volume and other controls for audio & video equipment, dimmer controls for lights among a multitude of other daily electrical products. Such slide switches have also been used for controlling the operating speed of many kinds of variable speed hand tools. In electrical slide switches a slide member is slidably repositionable to affect a switching action.

### Contact Material Silver plated Code 1

Fixed Terminal: Silver plated over copper alloy  
 Moving Contact: Silver plated over copper alloy  
 Contact Rating: 6A with resistive load 120VAX or 28VDC  
 3A with resistive load 250VAC

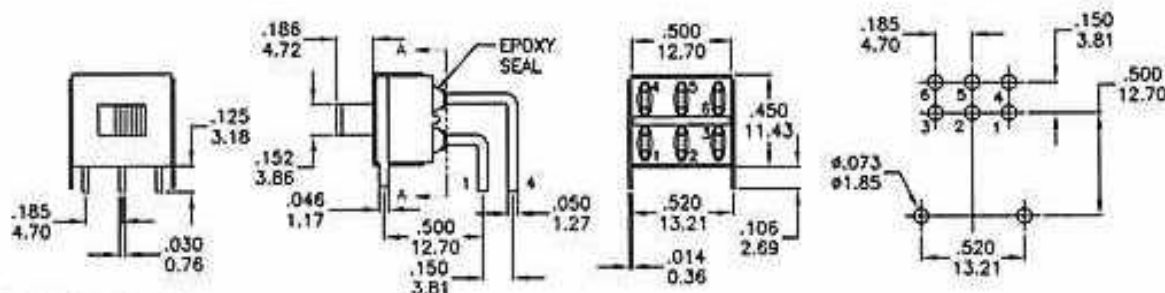
### Contact Material Gold plated Code 2

Fixed Terminal: Copper Alloy with gold plated over nickel plated  
 Moving Contact: Copper Alloy with gold plated over nickel plated  
 Contact Rating: 0,4 Volt-Amps (VA max. @ 20V max.AC or DC)

### Electrical Specifications and Material

Electrical Life: 60.000 make and break cycles at full load  
 Contact Resistance: 10mΩ max. initial @2-4VDC. 100mA for both silver and gold plated contacts.  
 Insulation Resistance: 1000M Ω min.  
 Dielectric Strength: 1000V RMS min. @ sea level  
 Operating Temperature: -30°C to +130°C  
 Case: Diallyl phthalate (DAP) (UL94V-0)  
 Actuator: Nylon, Black Standard  
 Housing: Stainless steel  
 Switch Support: Brann,tin plated  
 Terminal/Contact: Silver or gold plated  
 Terminal Seal: Epoxy

### Technical Drawing



## SLIDE-SWITCH

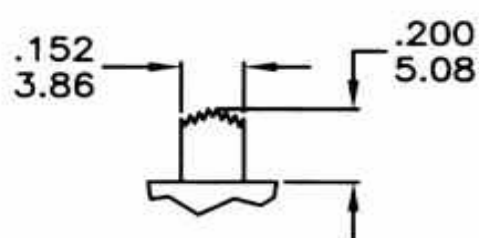
Part No.: **Q52A1004**

DRW:	Jason	CHKD	Wilson	MATL:	Wilson	TOLERANCE	Mason	DATE	10.04.2009
APPD:	Schumi			FINISH	Jamy		Sheet No.	1 from 4	Customer:

# EDCON-COMPONENTS

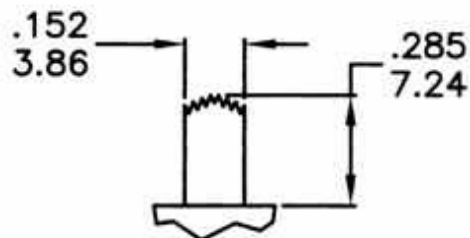


Actuator Type 1



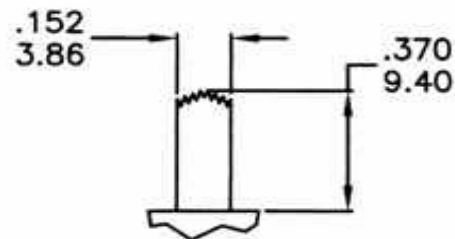
Terminations Type A

Actuator Type 2



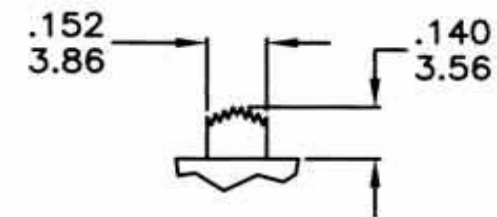
Terminations Type B

Actuator Type 3

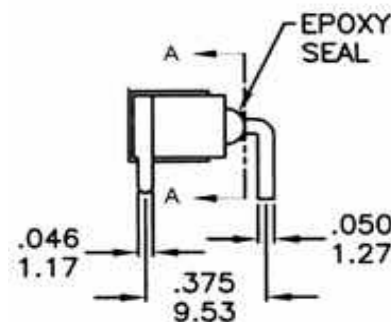


Terminations Type C

Actuator Type 4



Terminations Type D



## SLIDE-SWITCH

Part No.: **Q52A1004**

DRW:	Jason	CHKD	Wilson	MATL:	Wilson	TOLERANCE	Mason	DATE	10.04.2009
APPD:	Schumi			FINISH	Jamy		Sheet No.	2 from 4	Customer:

[www.edcon-components.com](http://www.edcon-components.com)

email: [info@edcon-components.com](mailto:info@edcon-components.com)

# EDCON-COMPONENTS



Switch function	Pos.1	Pos2	Pos3	Pos 1	Pos 2	Pos 3
A2	ON	NONE	ON	.2-1, 5-4	OPEN	.2-3, 5-6
A3	ON	OFF	ON			

## Ordering Informations

Serie	Switch function	ACTUATOR	CONTACT MATERIAL	SEAL	ROHS	Packing				
<b>Q52A1004</b>	<b>B</b>	<b>1</b>	<b>1</b>	<b>A</b>	<b>R</b>	<b>BU1</b>				

<b>B= A2</b>	<b>1= C1</b>	<b>1= Silver</b>	<b>A= Epoxy</b>	<b>R= Rohs conform</b> <b>N= NON Rohs conform</b>	<b>BU1= 100PCS per Bag</b>
<b>C= A3</b>	<b>2= C2</b>	<b>2= Gold plated</b>	<b>B= No Epoxy</b>		
	<b>3= C3</b>				
	<b>4= C4</b>				

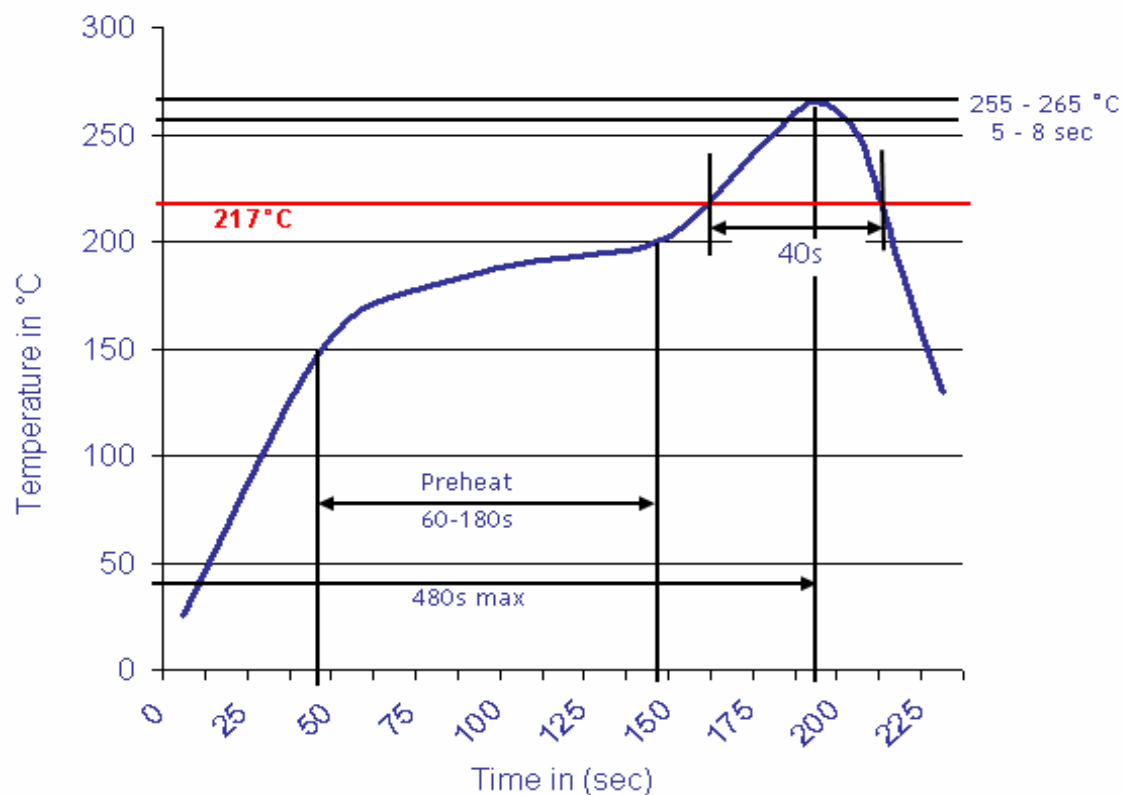
<b>SLIDE-SWITCH</b>
Part No.: <b>Q52A1004</b>
Customer:

DRW:	Jason	CHKD	Wilson	MATL:	Wilson	TOLERANCE	Mason	DATE	10.04.2009
APPD:	Schumi			FINISH	Jamy		Sheet No.		3 from 4



Lead Free Soldering curve

Classification Reflow Profile (JEDEC J-STD-020C)



<b>SLIDE-SWITCH</b>	
Part No.:	<b>Q52A1004</b>
Customer:	

DRW:	Jason	CHKD	Wilson	MATL:	Wilson	TOLERANCE	Mason	DATE	10.04.2009
APPD:	Schumi			FINISH	Jamy		Sheet No.	4 from 4	