

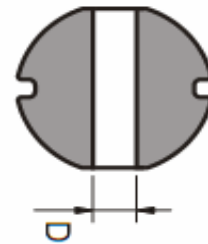
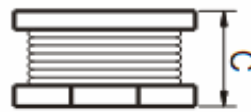
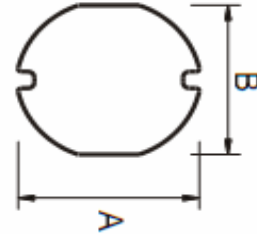


Technical Specification

Features

- Current up to 2,6A
- Large Current
- Flat Top for PIC and PLACE
- Standard Tape / Reel Packing
- Tighter Tolerance acceptable

Dimensions



Applications

- Ideal for PALM-Top and Laptop
- DC-DC Converters
- PDA's Flash Memory
- Step-up / Step-down converters
- Set-Top-Box

Technical Dimensions

A (mm)	B (mm)	C (mm)	D (mm)
10,0 +/- 0,3	9,0 +/-0,3	5,5 +/-0,3	2,1

Electrical Characteristics

Technical Information

Test-Frequence with HP 4282A and HP4285A equivalent acceptable
 DCR: GW813 or QuadTech 1880 Milliohmeter
 IDC. Max is decreased 10% against ist initial value
 Operating Temperature: -40°C ~ +85°C
 Storage Temperature: -40°C ~ +105°C
 Solder Methods: Vapor Phase, Infrared Reflow
 Resistance to Soldering Heat look Derating curve
 Solvent Resistance: Conforms to MIL-STD-2020E
 Marking on the item: Inductance + Tolerance
 All specifications subject to change without notice:

Inductance	Inductance Code	IDC	DCR max.
47µH	470	1,280A	0,170Ω

SMT High Current Power Choke Size 1006

Part No.: **S18009**

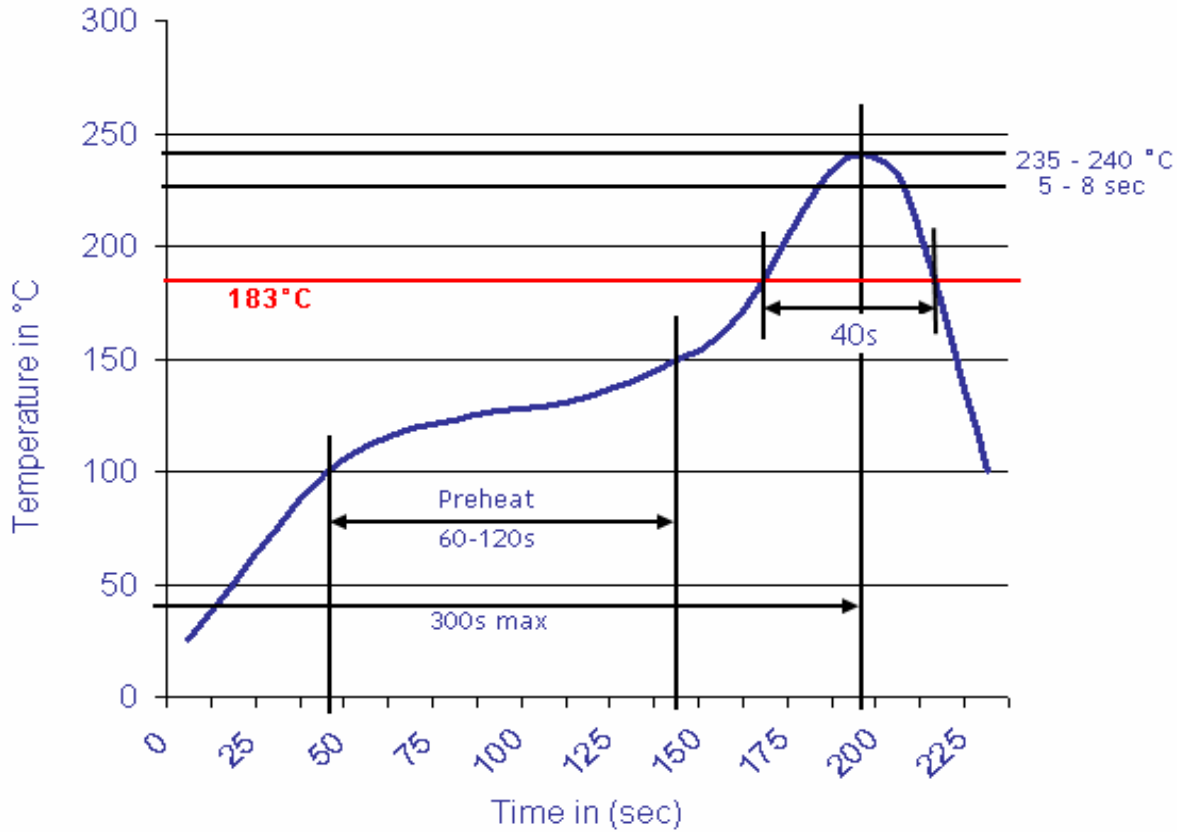
Customer:

DRW:	Jason	CHKD	Jules	MATL:	Wu	DATE	28.04.2009
APPD:	Join			FINISH	Shieh	Sheet	1 from 2



Soldering Profile

Classification Reflow Profile (JEDEC J-STD-020C)



Ordering Information

Serie	Inductance	Tolerance	ROHS	Packing		
S18009	470	M	R	BU		

470= 47µH	M= Tol. 20%	R= ROHS conform	BU= Bulk Ware
	K= Tol. 10%	N=NON ROHS conform	TR= Tape / Reel

SMT High Current Power Choke Size 1006	
Part No.:	S18009
Customer:	

DRW:	Jason	CHKD	Jules	MATL:	Wu	DATE	28.04.2009
APPD:	Join			FINISH	Shieh	Sheet	2 from 2

