



Technical Specification

Features

Wire Wound Construction
 Magnetic Shielded Construction
 Excellent environmental characteristics
 Excellent Mechanical Strength
 Excellent Solderability
 High reliability
 Low Profile

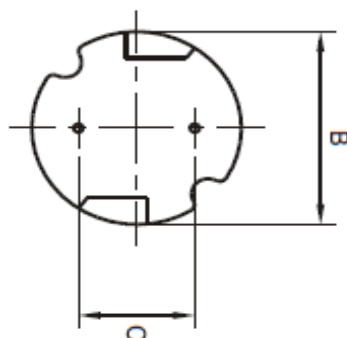
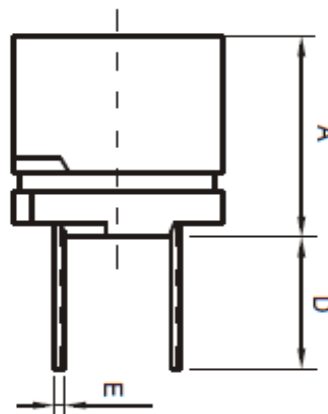
Applications

VCR, PDP, LCD, TV set
 Automotive Systems
 Computer / Peripheral Equipment
 GPS, DC/Dc Converter, XDSL Modem
 Electronic Games
 Communications Equipment
 General Electronic Applications
 Network Systems

Technical Dimensions

| A (mm) | B (mm) | C (mm) | D (mm) |
|--------|--------------|------------|--------|
| 7,5 | 7,8 / +/-0,5 | 5,0 +/-0,5 | 4 min |
| E (mm) | | | |
| 0,65 | | | |

Dimensions



Electrical Characteristics

Technical Information

Testing LCR Bridge, measured @ 1KHz 0,1V HP4284A
 Equivalent acceptacle
 RDC. QuadTech 1880 Milliohmeter
 IDC: Max. Lowers inductance by 10%
 Operating Temperature: -40°C ~ +105°C
 Storage Temperature: -40°C ~ +105°C
 Solder Methods: Vapor Phase, Infrared Reflow
 Marking: Inductance and tolerance
 Note: All specifications subject to change without notice.

| Inductance | Inductance Code | IDC | DCR max. |
|------------|-----------------|--------|----------|
| 680μH | 681 | 0,280A | 2,070Ω |

THT Radial Shielded Power Choke

Part No.: **S10R32**

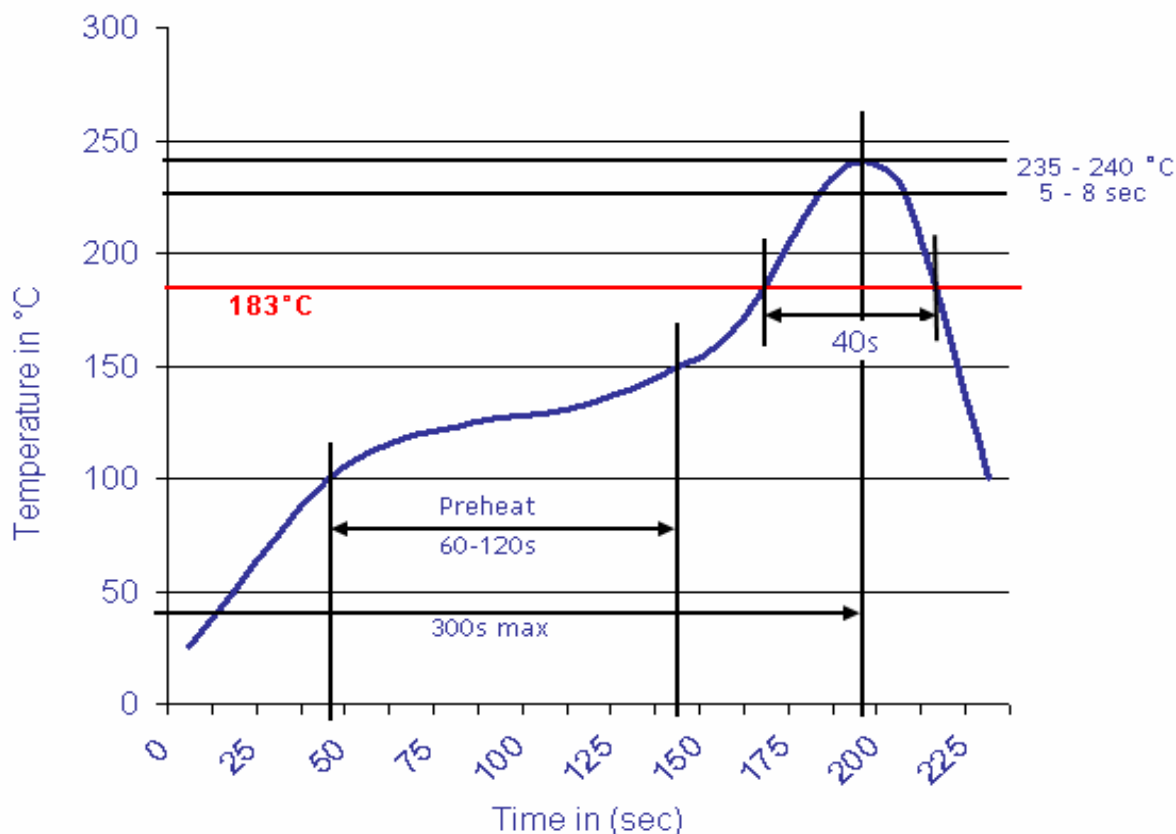
Customer:

| | | | | | | | |
|-------|-------|------|-------|--------|-------|-------|------------|
| DRW: | Jason | CHKD | Jules | MATL: | Wu | DATE | 02.05.2009 |
| APPD: | Join | | | FINISH | Shieh | Sheet | 1 from 2 |



Soldering Profile

Classification Reflow Profile (JEDEC J-STD-020C)



Ordering Information

| Serie | Inductance | Tolerance | Lead Length | ROHS | Packing |
|---------------|------------|-----------|-------------|----------|-------------|
| S10R32 | 681 | K | 50 | R | BU10 |

| | | | | |
|--------------------|---------------------|-----------------|----------------------------|--------------------------|
| 681 = 680µH | K = Tol. 10% | 50 = 5mm | R = ROHS conform | BU = Bulk Ware |
| | J = Tol. 5% | | N =NON ROHS conform | TY = Tray Package |

| | |
|--|---------------|
| THT Radial Shielded Power Choke | |
| Part No.: | S10R32 |
| Customer: | |

| | | | | | | | |
|-------|-------|------|-------|--------|-------|-------|------------|
| DRW: | Jason | CHKD | Jules | MATL: | Wu | DATE | 02.05.2009 |
| APPD: | Join | | | FINISH | Shieh | Sheet | 2 from 2 |

