



Technical Specification

Features

Wire Wound Construction
 Magnetic Shielded Construction
 Excellent environmental characteristics
 Excellent Mechanical Strength
 Excellent Solderability
 High reliability
 Low Profile

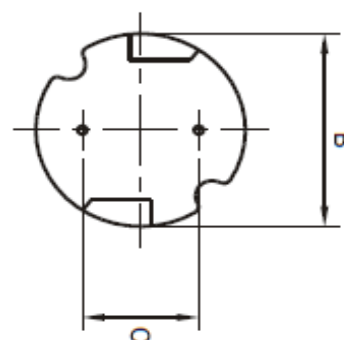
Applications

VCR '2 PDP, LCD, TV set
 Automotive Systems
 Computer / Peripheral Equipment
 GPS, DC/Dc Converter, XDSL Modem
 Electronic Games
 Communications Equipment
 General Electronic Applications
 Network Systems

Technical Dimensions

| A (mm) | B (mm) | C (mm) | D (mm) |
|--------|--------------|------------|--------|
| 7,5 | 7,8 / +/-0,5 | 5,0 +/-0,5 | 4 min |
| E (mm) | | | |
| 0,65 | | | |

Dimensions



Electrical Characteristics

Technical Information

Testing LCR Bridge, measured @ 1KHz 0,1V HP4284A
 Equivalent acceptacle
 RDC. QuadTech 1880 Milliohmeter
 IDC: Max. Lowers inductance by 10%
 Operating Temperature: -40°C ~ +105°C
 Storage Temperature: -40°C ~ +105°C
 Solder Methods: Vapor Phase, Infrared Reflow
 Marking: Inductance and tolerance
 Note: All specifications subject to change without notice.

| Inductance | Inductance Code | IDC | DCR max. |
|------------|-----------------|--------|----------|
| 3900µH | 392 | 0,120A | 12,900Ω |

THT Radial Shielded Power Choke

Part No.: **S10R32**

Customer:

| | | | | | | | |
|-------|-------|------|-------|--------|-------|-------|------------|
| DRW: | Jason | CHKD | Jules | MATL: | Wu | DATE | 02.05.2009 |
| APPD: | Join | | | FINISH | Shieh | Sheet | 1 from 2 |

Copyright by EDCON-COMPONENTS H.Schmitt 20.6.2008



Soldering Profile

Classification Reflow Profile (JEDEC J-STD-020C)



Ordering Information

| Serie | Inductance | Tolerance | Lead Length | ROHS | Packing |
|---------------|------------|-----------|-------------|----------|-------------|
| S10R32 | 392 | K | 50 | R | BU10 |

| | | | | |
|--------------------|--------------------|----------------|----------------------------|-------------------------|
| 392= 3900µH | K= Tol. 10% | 50= 5mm | R= ROHS conform | BU= Bulk Ware |
| | J= Tol. 5% | | N= NON ROHS conform | TY= Tray Package |

THT Radial Shielded Power Choke

Part No.: **S10R32**
 Customer:

| | | | | | | | |
|-------|-------|------|-------|--------|-------|-------|------------|
| DRW: | Jason | CHKD | Jules | MATL: | Wu | DATE | 02.05.2009 |
| APPD: | Join | | | FINISH | Shieh | Sheet | 2 from 2 |

